



[Go to Product page](#)

Datasheet for ABIN6257460

## anti-RIOK2 antibody (Internal Region)

### 2 Images

#### Overview

Quantity:	100 µL
Target:	RIOK2
Binding Specificity:	Internal Region
Reactivity:	Human
Host:	Rabbit
Clonality:	Polyclonal
Conjugate:	This RIOK2 antibody is un-conjugated
Application:	Western Blotting (WB), ELISA, Immunofluorescence (IF), Immunohistochemistry (IHC), Immunocytochemistry (ICC)

#### Product Details

Immunogen:	A synthesized peptide derived from human RIOK2, corresponding to a region within the internal amino acids.
Isotype:	IgG
Specificity:	RIOK2 Antibody detects endogenous levels of total RIOK2.
Purification:	The antiserum was purified by peptide affinity chromatography using SulfoLink™ Coupling Resin (Thermo Fisher Scientific).

#### Target Details

Target:	RIOK2
Alternative Name:	RIOK2 ( <a href="#">RIOK2 Products</a> )

## Target Details

---

**Background:** Description: Serine/threonine-protein kinase involved in the final steps of cytoplasmic maturation of the 40S ribosomal subunit. Involved in export of the 40S pre-ribosome particles (pre-40S) from the nucleus to the cytoplasm. Its kinase activity is required for the release of NOB1, PNO1 and LTV1 from the late pre-40S and the processing of 18S-E pre-rRNA to the mature 18S rRNA (PubMed:19564402). Regulates the timing of the metaphase-anaphase transition during mitotic progression, and its phosphorylation, most likely by PLK1, regulates this function (PubMed:21880710).

Gene: RIOK2

---

**Molecular Weight:** 63 kDa

---

**Gene ID:** 55781

---

**UniProt:** [Q9BVS4](#)

---

## Application Details

---

**Application Notes:** WB 1:500-1:2000, IHC 1:50-1:200, IF/ICC 1:100-1:500, ELISA(peptide) 1:20000-1:40000

---

**Restrictions:** For Research Use only

---

## Handling

---

**Format:** Liquid

---

**Concentration:** 1 mg/mL

---

**Buffer:** Rabbit IgG in phosphate buffered saline, pH 7.4, 150 mM NaCl, 0.02 % sodium azide and 50 % glycerol.

---

**Preservative:** Sodium azide

---

**Precaution of Use:** This product contains Sodium azide: a POISONOUS AND HAZARDOUS SUBSTANCE which should be handled by trained staff only.

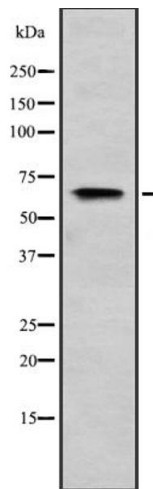
---

**Storage:** -20 °C

---

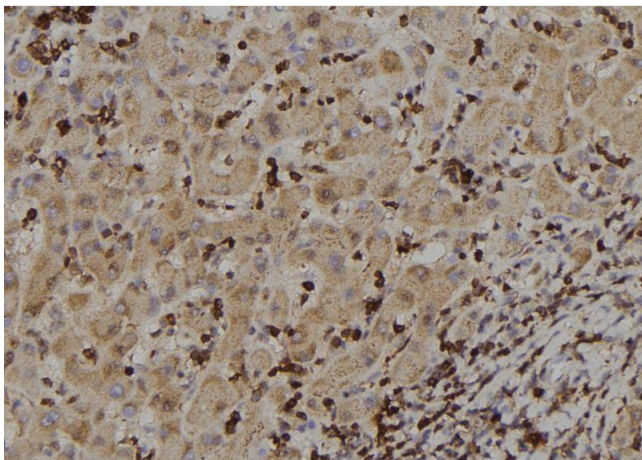
**Expiry Date:** 12 months

---



### Western Blotting

**Image 1.** Western blot analysis of R1OK2 expression in HEK293 cells. The lane on the left is treated with the antigen-specific peptide.



### Immunohistochemistry

**Image 2.** ABIN6273388 at 1/100 staining Human liver tissue by IHC-P. The sample was formaldehyde fixed and a heat mediated antigen retrieval step in citrate buffer was performed. The sample was then blocked and incubated with the antibody for 1.5 hours at 22°C. An HRP conjugated goat anti-rabbit antibody was used as the secondary.