

Datasheet for ABIN6257474

anti-Relaxin 3 Receptor 1 antibody (Internal Region)[Go to Product page](#)**2** Images

Overview

Quantity:	100 µL
Target:	Relaxin 3 Receptor 1 (RXFP3)
Binding Specificity:	Internal Region
Reactivity:	Human, Mouse, Rat
Host:	Rabbit
Clonality:	Polyclonal
Conjugate:	This Relaxin 3 Receptor 1 antibody is un-conjugated
Application:	Western Blotting (WB), ELISA, Immunocytochemistry (ICC), Immunofluorescence (IF)

Product Details

Immunogen:	A synthesized peptide derived from human RXFP3, corresponding to a region within the internal amino acids.
Isotype:	IgG
Specificity:	RXFP3 Antibody detects endogenous levels of total RXFP3.
Predicted Reactivity:	Bovine, Sheep, Rabbit
Purification:	The antiserum was purified by peptide affinity chromatography using SulfoLink™ Coupling Resin (Thermo Fisher Scientific).

Target Details

Target:	Relaxin 3 Receptor 1 (RXFP3)
---------	------------------------------

Target Details

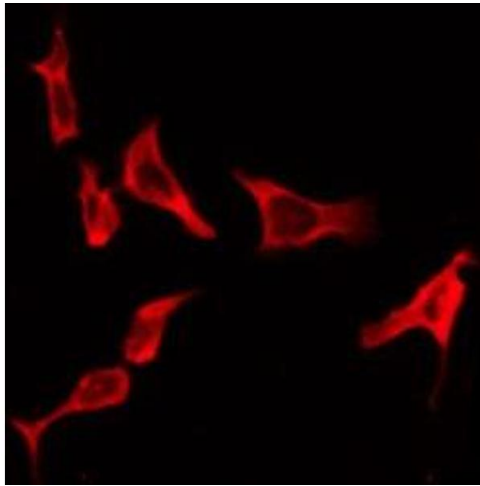
Alternative Name:	RXFP3 (RXFP3 Products)
Background:	Description: Receptor for RNL3/relaxin-3. Binding of the ligand inhibit cAMP accumulation. Gene: RXFP3
Molecular Weight:	51 kDa
Gene ID:	51289
UniProt:	Q9NSD7

Application Details

Application Notes:	WB 1:500-1:1000, IF/ICC 1:100-1:500, ELISA(peptide) 1:20000-1:40000
Restrictions:	For Research Use only

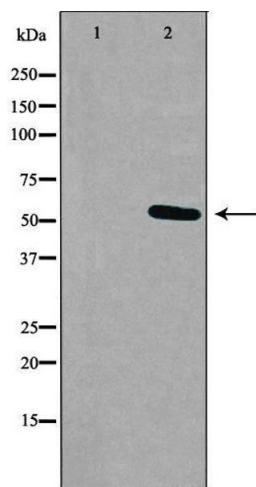
Handling

Format:	Liquid
Concentration:	1 mg/mL
Buffer:	Rabbit IgG in phosphate buffered saline , pH 7.4, 150 mM NaCl, 0.02 % sodium azide and 50 % glycerol.
Preservative:	Sodium azide
Precaution of Use:	This product contains Sodium azide: a POISONOUS AND HAZARDOUS SUBSTANCE which should be handled by trained staff only.
Storage:	-20 °C
Storage Comment:	Store at -20 °C. Stable for 12 months from date of receipt.
Expiry Date:	12 months



Immunofluorescence (fixed cells)

Image 1. ABIN6276211 staining HeLa by IF/ICC. The sample were fixed with PFA and permeabilized in 0.1% Triton X-100, then blocked in 10% serum for 45 minutes at 25°C. The primary antibody was diluted at 1/200 and incubated with the sample for 1 hour at 37°C. An Alexa Fluor 594 conjugated goat anti-rabbit IgG (H+L) Ab, diluted at 1/600, was used as the secondary antibody.



Western Blotting

Image 2. Western blot analysis of extracts from K562 cells, using RXFP3 antibody. The lane on the left is treated with the antigen-specific peptide.