



[Go to Product page](#)

Datasheet for ABIN6257487

anti-S100A3 antibody (Internal Region)

1 Image

Overview

Quantity:	100 µL
Target:	S100A3
Binding Specificity:	Internal Region
Reactivity:	Human, Rat, Mouse
Host:	Rabbit
Clonality:	Polyclonal
Conjugate:	This S100A3 antibody is un-conjugated
Application:	Western Blotting (WB), Immunohistochemistry (IHC), ELISA, Immunocytochemistry (ICC), Immunofluorescence (IF)

Product Details

Immunogen:	A synthesized peptide derived from human S100A3, corresponding to a region within the internal amino acids.
Isotype:	IgG
Specificity:	S100A3 Antibody detects endogenous levels of total S100A3.
Predicted Reactivity:	Pig,Horse,Rabbit,Dog
Purification:	The antiserum was purified by peptide affinity chromatography using SulfoLink™ Coupling Resin (Thermo Fisher Scientific).

Target Details

Target:	S100A3
---------	--------

Target Details

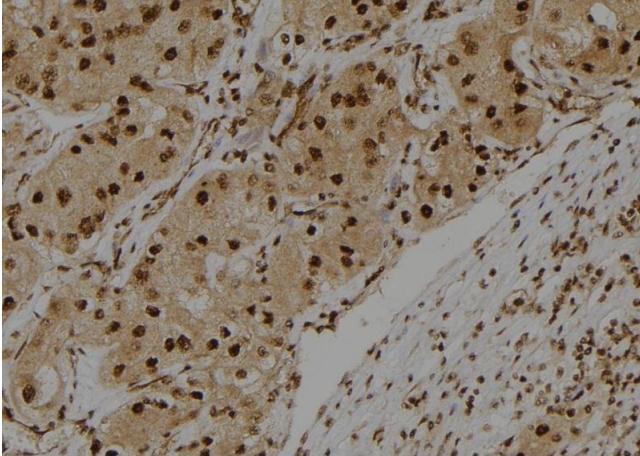
Alternative Name:	S100A3 (S100A3 Products)
Background:	Description: Binds both calcium and zinc. May be involved in calcium-dependent cuticle cell differentiation, hair shaft and hair cuticular barrier formation. Gene: S100A3
Molecular Weight:	0 kDa
Gene ID:	6274
UniProt:	P33764
Pathways:	S100 Proteins

Application Details

Application Notes:	IHC: 1:50-1:200, WB 1:500-1:2000, ELISA(peptide) 1:20000-1:40000, IF/ICC 1:100-1:500
Restrictions:	For Research Use only

Handling

Format:	Liquid
Concentration:	1 mg/mL
Buffer:	Rabbit IgG in phosphate buffered saline , pH 7.4, 150 mM NaCl, 0.02 % sodium azide and 50 % glycerol.
Preservative:	Sodium azide
Precaution of Use:	This product contains Sodium azide: a POISONOUS AND HAZARDOUS SUBSTANCE which should be handled by trained staff only.
Storage:	-20 °C
Storage Comment:	Store at -20 °C. Stable for 12 months from date of receipt.
Expiry Date:	12 months



Immunohistochemistry

Image 1. ABIN6275419 at 1/100 staining Human kidney tissue by IHC-P. The sample was formaldehyde fixed and a heat mediated antigen retrieval step in citrate buffer was performed. The sample was then blocked and incubated with the antibody for 1.5 hours at 22°C. An HRP conjugated goat anti-rabbit antibody was used as the secondary