

Datasheet for ABIN6257506
anti-SRY antibody (Internal Region)

2 Images

[Go to Product page](#)

Overview

Quantity:	100 µL
Target:	SRY
Binding Specificity:	Internal Region
Reactivity:	Human, Rat
Host:	Rabbit
Clonality:	Polyclonal
Conjugate:	This SRY antibody is un-conjugated
Application:	Western Blotting (WB), ELISA, Immunofluorescence (IF), Immunocytochemistry (ICC)

Product Details

Immunogen:	A synthesized peptide derived from human SRY, corresponding to a region within the internal amino acids.
Isotype:	IgG
Specificity:	SRY Antibody detects endogenous levels of total SRY.
Predicted Reactivity:	Pig,Dog
Purification:	The antiserum was purified by peptide affinity chromatography using SulfoLink™ Coupling Resin (Thermo Fisher Scientific).

Target Details

Target:	SRY
---------	-----

Target Details

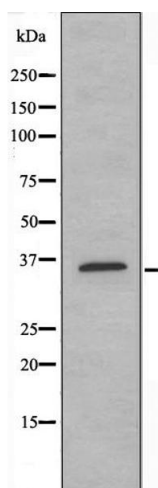
Alternative Name:	SRY (SRY Products)
Background:	<p>Description: Transcriptional regulator that controls a genetic switch in male development. It is necessary and sufficient for initiating male sex determination by directing the development of supporting cell precursors (pre-Sertoli cells) as Sertoli rather than granulosa cells (By similarity). In male adult brain involved in the maintenance of motor functions of dopaminergic neurons (By similarity). Involved in different aspects of gene regulation including promoter activation or repression (By similarity). Promotes DNA bending. SRY HMG box recognizes DNA by partial intercalation in the minor groove. Also involved in pre-mRNA splicing. Binds to the DNA consensus sequence 5'-[AT]AACAA[AT]-3'.</p> <p>Gene: SRY</p>
Molecular Weight:	37 kDa
Gene ID:	6736
UniProt:	Q05066

Application Details

Application Notes:	WB 1:500-1:1000, IF/ICC 1:100-1:500, ELISA(peptide) 1:20000-1:40000
Restrictions:	For Research Use only

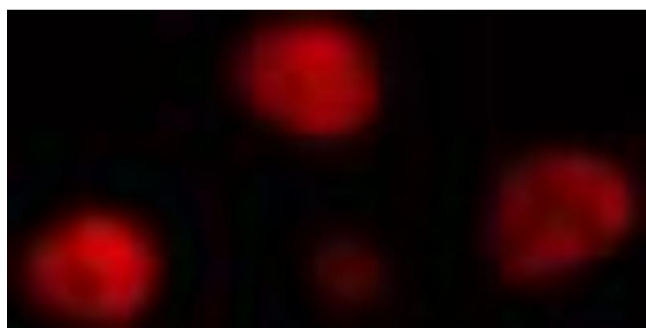
Handling

Format:	Liquid
Concentration:	1 mg/mL
Buffer:	Rabbit IgG in phosphate buffered saline , pH 7.4, 150 mM NaCl, 0.02 % sodium azide and 50 % glycerol.
Preservative:	Sodium azide
Precaution of Use:	This product contains Sodium azide: a POISONOUS AND HAZARDOUS SUBSTANCE which should be handled by trained staff only.
Storage:	-20 °C
Storage Comment:	Store at -20 °C. Stable for 12 months from date of receipt.
Expiry Date:	12 months



Western Blotting

Image 1. Western blot analysis of extracts from HeLa cells, using SRY antibody.



Immunofluorescence (fixed cells)

Image 2. ABIN6274319 staining HeLa cells by IF/ICC. The sample were fixed with PFA and permeabilized in 0.1% Triton X-100, then blocked in 10% serum for 45 minutes at 25°C. The primary antibody was diluted at 1/200 and incubated with the sample for 1 hour at 37°C. An Alexa Fluor 594 conjugated goat anti-rabbit IgG (H+L) antibody (Cat.# S0006), diluted at 1/600, was used as secondary antibody.