

Datasheet for ABIN6257509

anti-SLC01B1 antibody**3** Images[Go to Product page](#)

Overview

Quantity:	100 µL
Target:	SLC01B1
Reactivity:	Human, Mouse
Host:	Rabbit
Clonality:	Polyclonal
Conjugate:	This SLC01B1 antibody is un-conjugated
Application:	Western Blotting (WB), ELISA, Immunofluorescence (IF), Immunocytochemistry (ICC)

Product Details

Immunogen:	A synthesized peptide
Isotype:	IgG
Specificity:	SLC01B1 Antibody detects endogenous levels of total SLC01B1
Cross-Reactivity:	Human, Mouse (Murine)
Purification:	The antiserum was purified by peptide affinity chromatography using SulfoLink™ Coupling Resin (Thermo Fisher Scientific).

Target Details

Target:	SLC01B1
Alternative Name:	SLC01B1 (SLC01B1 Products)
Background:	Description: Mediates the Na ⁺ -independent uptake of organic anions such as pravastatin,

Target Details

taurocholate, methotrexate, dehydroepiandrosterone sulfate, 17-beta-glucuronosyl estradiol, estrone sulfate, prostaglandin E2, thromboxane B2, leukotriene C3, leukotriene E4, thyroxine and triiodothyronine. Involved in the clearance of bile acids and organic anions from the liver.
Gene: SLC01B1

Molecular Weight: 76 kDa

Gene ID: 10599

UniProt: [Q9Y6L6](#)

Application Details

Application Notes: WB 1:500~1:1000, IF/ICC 1:100-1:500

Restrictions: For Research Use only

Handling

Format: Liquid

Concentration: 1 mg/mL

Buffer: Rabbit IgG in phosphate buffered saline , pH 7.4, 150 mM NaCl, 0.02 % sodium azide and 50 % glycerol.

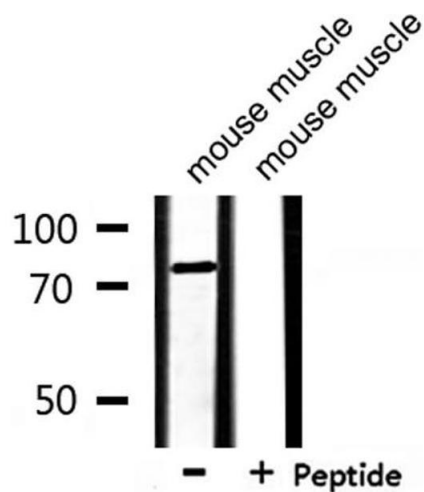
Preservative: Sodium azide

Precaution of Use: This product contains Sodium azide: a POISONOUS AND HAZARDOUS SUBSTANCE which should be handled by trained staff only.

Storage: -20 °C

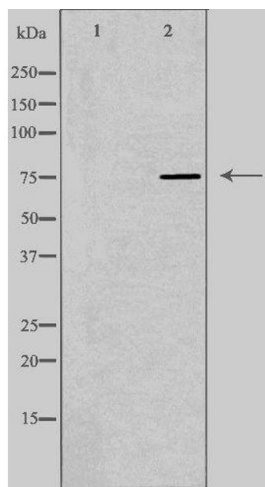
Storage Comment: Store at -20 °C.Stable for 12 months from date of receipt

Expiry Date: 12 months



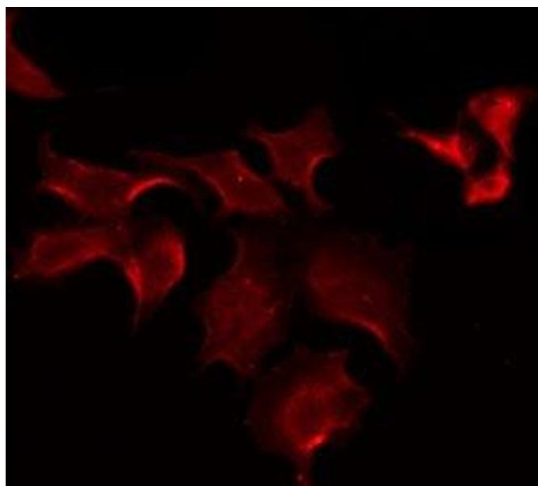
Western Blotting

Image 1. Western blot analysis of extracts from mouse muscle, using SLCO1B1 Antibody.



Western Blotting

Image 2. Western blot analysis of extracts from COLO205 using SLCO1B1 antibody. The lane on the left is treated with the antigen-specific peptide.



Immunofluorescence (fixed cells)

Image 3. ABIN6275598 staining COLO205 by IF/ICC. The sample were fixed with PFA and permeabilized in 0.1% Triton X-100, then blocked in 10% serum for 45 minutes at 25°C. The primary antibody was diluted at 1/200 and incubated with the sample for 1 hour at 37°C. An Alexa Fluor 594 conjugated goat anti-rabbit IgG (H+L) Ab, diluted at 1/600, was used as the secondary antibody.