

Datasheet for ABIN6257528
anti-TBP antibody (N-Term)

2 Images

[Go to Product page](#)

Overview

Quantity:	100 µL
Target:	TBP
Binding Specificity:	N-Term
Reactivity:	Human, Mouse, Rat
Host:	Rabbit
Clonality:	Polyclonal
Conjugate:	This TBP antibody is un-conjugated
Application:	Western Blotting (WB), ELISA, Immunofluorescence (IF), Immunocytochemistry (ICC)

Product Details

Immunogen:	A synthesized peptide derived from human TBP, corresponding to a region within N-terminal amino acids.
Isotype:	IgG
Specificity:	TBP Antibody detects endogenous levels of total TBP.
Predicted Reactivity:	Pig,Zebrafish,Bovine,Horse,Rabbit,Dog,Chicken
Purification:	The antiserum was purified by peptide affinity chromatography using SulfoLink™ Coupling Resin (Thermo Fisher Scientific).

Target Details

Target:	TBP
---------	-----

Target Details

Alternative Name: TBP ([TBP Products](#))

Background: Description: General transcription factor that functions at the core of the DNA-binding multiprotein factor TFIID (PubMed:2374612, PubMed:2363050, PubMed:2194289, PubMed:9836642, PubMed:27193682). Binding of TFIID to the TATA box is the initial transcriptional step of the pre-initiation complex (PIC), playing a role in the activation of eukaryotic genes transcribed by RNA polymerase II (PubMed:2374612, PubMed:2363050, PubMed:2194289, PubMed:9836642, PubMed:27193682). Component of a BRF2-containing transcription factor complex that regulates transcription mediated by RNA polymerase III (PubMed:26638071). Component of the transcription factor SL1/TIF-IB complex, which is involved in the assembly of the PIC (pre-initiation complex) during RNA polymerase I-dependent transcription (PubMed:15970593). The rate of PIC formation probably is primarily dependent on the rate of association of SL1 with the rDNA promoter. SL1 is involved in stabilization of nucleolar transcription factor 1/UBTF on rDNA.

Gene: TBP

Molecular Weight: 38 kDa

Gene ID: 6908

UniProt: [P20226](#)

Pathways: [WNT Signaling](#)

Application Details

Application Notes: WB 1:500-1:1000, IF/ICC 1:100-1:500, ELISA(peptide) 1:20000-1:40000

Restrictions: For Research Use only

Handling

Format: Liquid

Concentration: 1 mg/mL

Buffer: Rabbit IgG in phosphate buffered saline , pH 7.4, 150 mM NaCl, 0.02 % sodium azide and 50 % glycerol.

Preservative: Sodium azide

Precaution of Use: This product contains Sodium azide: a POISONOUS AND HAZARDOUS SUBSTANCE which should be handled by trained staff only.

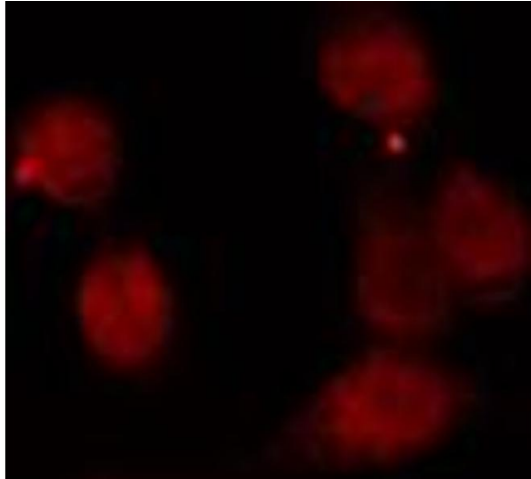
Handling

Storage: -20 °C

Storage Comment: Store at -20 °C. Stable for 12 months from date of receipt.

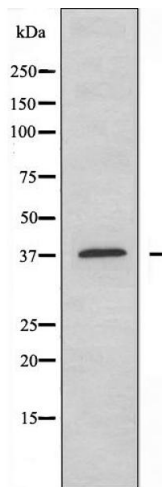
Expiry Date: 12 months

Images



Immunofluorescence (fixed cells)

Image 1. ABIN6274194 staining 293 cells by IF/ICC. The sample were fixed with PFA and permeabilized in 0.1% Triton X-100, then blocked in 10% serum for 45 minutes at 25°C. The primary antibody was diluted at 1/200 and incubated with the sample for 1 hour at 37°C. An Alexa Fluor 594 conjugated goat anti-rabbit IgG (H+L) antibody (Cat.# S0006), diluted at 1/600, was used as secondary antibody.



Western Blotting

Image 2. Western blot analysis of extracts from 293 cells, using TBP antibody.