



[Go to Product page](#)

Datasheet for ABIN6257532

anti-THO Complex 4 antibody (Internal Region)

2 Images

Overview

Quantity:	100 µL
Target:	THO Complex 4 (THOC4)
Binding Specificity:	Internal Region
Reactivity:	Human, Mouse, Rat
Host:	Rabbit
Clonality:	Polyclonal
Conjugate:	This THO Complex 4 antibody is un-conjugated
Application:	Western Blotting (WB), ELISA, Immunofluorescence (IF), Immunocytochemistry (ICC)

Product Details

Immunogen:	A synthesized peptide derived from human THOC4, corresponding to a region within the internal amino acids.
Isotype:	IgG
Specificity:	THOC4 Antibody detects endogenous levels of total THOC4.
Predicted Reactivity:	Pig,Zebrafish,Bovine,Horse,Sheep,Dog,Xenopus
Purification:	The antiserum was purified by peptide affinity chromatography using SulfoLink™ Coupling Resin (Thermo Fisher Scientific).

Target Details

Target:	THO Complex 4 (THOC4)
---------	-----------------------

Target Details

Alternative Name: [ALYREF \(THOC4 Products\)](#)

Background: Description: Export adapter involved in nuclear export of spliced and unspliced mRNA. Binds mRNA which is thought to be transferred to the NXF1-NXT1 heterodimer for export (TAP/NFX1 pathway). Component of the TREX complex which is thought to couple mRNA transcription, processing and nuclear export, and specifically associates with spliced mRNA and not with unspliced pre-mRNA. TREX is recruited to spliced mRNAs by a transcription-independent mechanism, binds to mRNA upstream of the exon-junction complex (EJC) and is recruited in a splicing- and cap-dependent manner to a region near the 5' end of the mRNA where it functions in mRNA export to the cytoplasm. TREX recruitment occurs via an interaction between ALYREF/THOC4 and the cap-binding protein NCBP1. The TREX complex is essential for the export of Kaposi's sarcoma-associated herpesvirus (KSHV) intronless mRNAs and infectious virus production, ALYREF/THOC4 mediates the recruitment of the TREX complex to the intronless viral mRNA. Required for TREX complex assembly and for linking DDX39B to the cap-binding complex (CBC). In conjunction with THOC5 functions in NXF1-NXT1 mediated nuclear export of HSP70 mRNA, both proteins enhance the RNA binding activity of NXF1 and are required for NXF1 localization to the nuclear rim. Involved in the nuclear export of intronless mRNA, proposed to be recruited to intronless mRNA by ATP-bound DDX39B. Involved in transcription elongation and genome stability.

Gene: ALYREF

Molecular Weight: 27 kDa

Gene ID: 10189

UniProt: [Q86V81](#)

Application Details

Application Notes: WB 1:500-1:1000, IF/ICC 1:100-1:500, ELISA(peptide) 1:20000-1:40000

Restrictions: For Research Use only

Handling

Format: Liquid

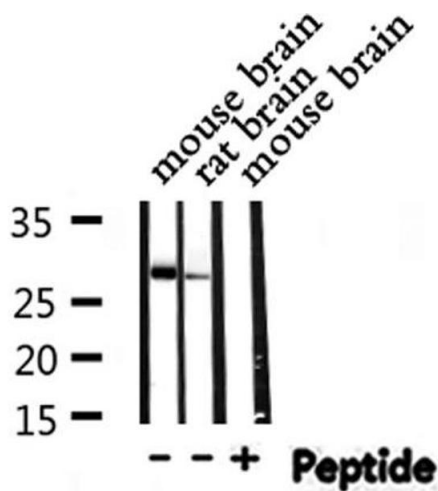
Concentration: 1 mg/mL

Buffer: Rabbit IgG in phosphate buffered saline , pH 7.4, 150 mM NaCl, 0.02 % sodium azide and 50 % glycerol.

Handling

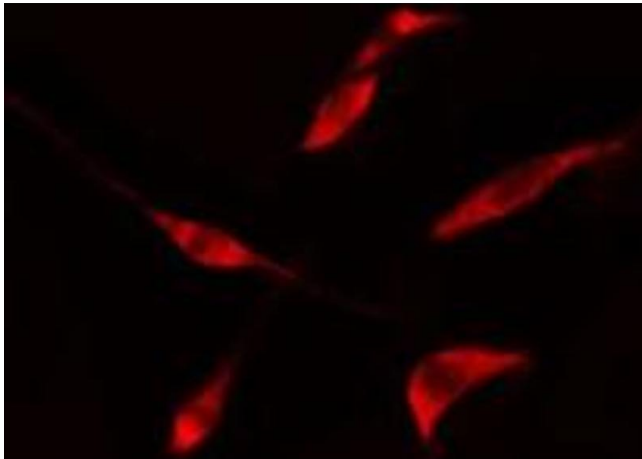
Preservative:	Sodium azide
Precaution of Use:	This product contains Sodium azide: a POISONOUS AND HAZARDOUS SUBSTANCE which should be handled by trained staff only.
Storage:	-20 °C
Storage Comment:	Store at -20 °C. Stable for 12 months from date of receipt.
Expiry Date:	12 months

Images



Western Blotting

Image 1. Western blot analysis of THOC4 expression in various lysates



Immunofluorescence (fixed cells)

Image 2. ABIN6275728 staining LOVO cells by IF/ICC. The sample were fixed with PFA and permeabilized in 0.1% Triton X-100, then blocked in 10% serum for 45 minutes at 25°C. The primary antibody was diluted at 1/200 and incubated with the sample for 1 hour at 37°C. An Alexa Fluor 594 conjugated goat anti-rabbit IgG (H+L) antibody (Cat.# S0006), diluted at 1/600, was used as secondary antibody.