

Datasheet for ABIN6257551
anti-WASF2 antibody (Internal Region)[Go to Product page](#)

4 Images

Overview

Quantity:	100 µL
Target:	WASF2
Binding Specificity:	Internal Region
Reactivity:	Human, Mouse, Rat
Host:	Rabbit
Clonality:	Polyclonal
Conjugate:	This WASF2 antibody is un-conjugated
Application:	ELISA, Western Blotting (WB), Immunohistochemistry (IHC), Immunofluorescence (IF), Immunocytochemistry (ICC)

Product Details

Immunogen:	A synthesized peptide derived from human WASF2, corresponding to a region within the internal amino acids.
Isotype:	IgG
Specificity:	WASF2 Antibody detects endogenous levels of total WASF2.
Predicted Reactivity:	Pig,Zebrafish,Bovine,Horse,Sheep,Rabbit,Dog,Chicken,Xenopus
Purification:	The antiserum was purified by peptide affinity chromatography using SulfoLink™ Coupling Resin (Thermo Fisher Scientific).

Target Details

Target:	WASF2
---------	-------

Target Details

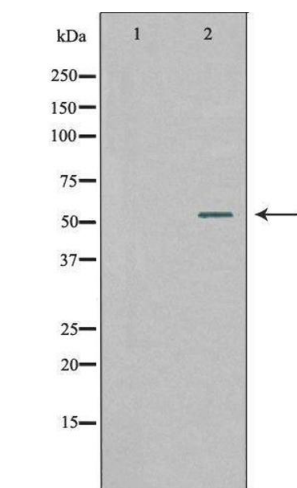
Alternative Name:	WASF2 (WASF2 Products)
Background:	<p>Description: Downstream effector molecule involved in the transmission of signals from tyrosine kinase receptors and small GTPases to the actin cytoskeleton. Promotes formation of actin filaments. Part of the WAVE complex that regulates lamellipodia formation. The WAVE complex regulates actin filament reorganization via its interaction with the Arp2/3 complex.</p> <p>Gene: WASF2</p>
Molecular Weight:	54 kDa
Gene ID:	10163
UniProt:	Q9Y6W5
Pathways:	RTK Signaling

Application Details

Application Notes:	WB 1:500-1:1000, IHC: 1:50-1:200, IF/ICC 1:100-1:500, ELISA(peptide) 1:20000-1:40000
Restrictions:	For Research Use only

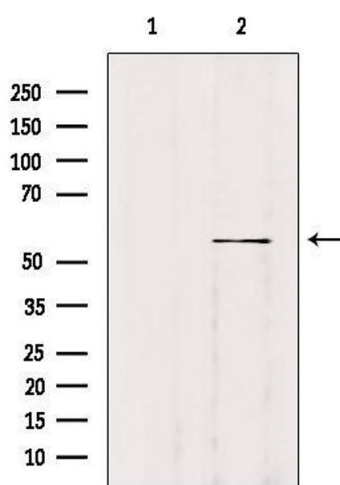
Handling

Format:	Liquid
Concentration:	1 mg/mL
Buffer:	Rabbit IgG in phosphate buffered saline , pH 7.4, 150 mM NaCl, 0.02 % sodium azide and 50 % glycerol.
Preservative:	Sodium azide
Precaution of Use:	This product contains Sodium azide: a POISONOUS AND HAZARDOUS SUBSTANCE which should be handled by trained staff only.
Storage:	-20 °C
Storage Comment:	Store at -20 °C. Stable for 12 months from date of receipt.
Expiry Date:	12 months



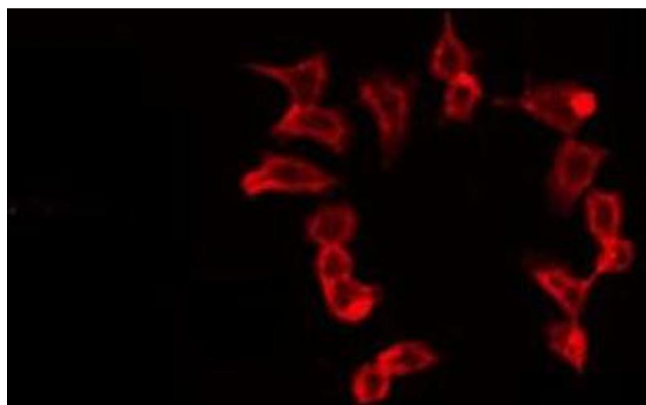
Western Blotting

Image 1. Western blot analysis of extracts from 293 cells, using WASF2 antibody. The lane on the left is treated with the antigen-specific peptide.



Western Blotting

Image 2. Western blot analysis of extracts from B16F10, using WASF2 Antibody. Lane 1 was treated with the blocking peptide.



Immunofluorescence (fixed cells)

Image 3. ABIN6275682 staining 293 by IF/ICC. The sample were fixed with PFA and permeabilized in 0.1% Triton X-100, then blocked in 10% serum for 45 minutes at 25°C. The primary antibody was diluted at 1/200 and incubated with the sample for 1 hour at 37°C. An Alexa Fluor 594 conjugated goat anti-rabbit IgG (H+L) Ab, diluted at 1/600, was used as the secondary antibody.

Please check the [product details page](#) for more images. Overall 4 images are available for ABIN6257551.