



[Go to Product page](#)

Datasheet for ABIN6257553
anti-WTAP antibody (C-Term)

3 Images

Overview

Quantity:	100 µL
Target:	WTAP
Binding Specificity:	C-Term
Reactivity:	Human, Mouse, Rat
Host:	Rabbit
Clonality:	Polyclonal
Conjugate:	This WTAP antibody is un-conjugated
Application:	Western Blotting (WB), ELISA, Immunohistochemistry (IHC), Immunocytochemistry (ICC), Immunofluorescence (IF)

Product Details

Immunogen:	A synthesized peptide derived from human WTAP, corresponding to a region within C-terminal amino acids.
Isotype:	IgG
Specificity:	WTAP Antibody detects endogenous levels of total WTAP.
Predicted Reactivity:	Horse, Sheep, Dog, Chicken, Xenopus
Purification:	The antiserum was purified by peptide affinity chromatography using SulfoLink™ Coupling Resin (Thermo Fisher Scientific).

Target Details

Target:	WTAP
---------	------

Target Details

Alternative Name: WTAP ([WTAP Products](#))

Background: Description: Regulatory subunit of the WMM N6-methyltransferase complex, a multiprotein complex that mediates N6-methyladenosine (m6A) methylation of some adenosine residues of some mRNAs and plays a role in the efficiency of mRNA splicing, processing and mRNA stability. Required for accumulation of METTL3 and METTL14 to nuclear speckle (PubMed:24316715, PubMed:24407421, PubMed:24981863). Acts as a mRNA splicing regulator (PubMed:12444081). Regulates G2/M cell-cycle transition by binding to the 3' UTR of CCNA2, which enhances its stability (PubMed:17088532). Impairs WT1 DNA-binding ability and inhibits expression of WT1 target genes (PubMed:17095724).

Gene: WTAP

Molecular Weight: 44 kDa

Gene ID: 9589

UniProt: [Q15007](#)

Application Details

Application Notes: WB 1:500-1:1000, IF/ICC 1:100-1:500, IHC 1:50-1:200, ELISA(peptide) 1:20000-1:40000

Restrictions: For Research Use only

Handling

Format: Liquid

Concentration: 1 mg/mL

Buffer: Rabbit IgG in phosphate buffered saline , pH 7.4, 150 mM NaCl, 0.02 % sodium azide and 50 % glycerol.

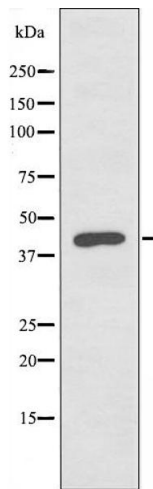
Preservative: Sodium azide

Precaution of Use: This product contains Sodium azide: a POISONOUS AND HAZARDOUS SUBSTANCE which should be handled by trained staff only.

Storage: -20 °C

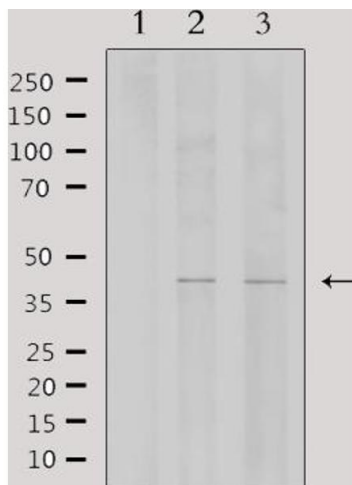
Storage Comment: Store at -20 °C. Stable for 12 months from date of receipt.

Expiry Date: 12 months



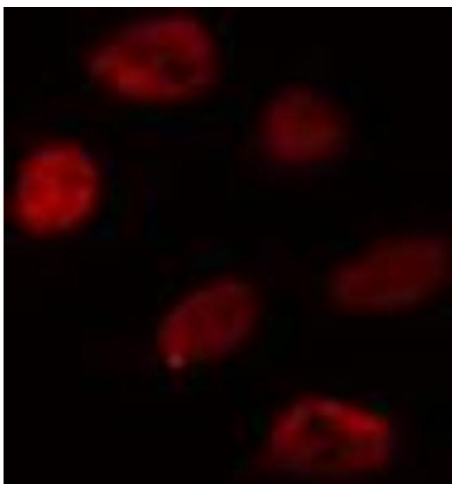
Western Blotting

Image 1. Western blot analysis of extracts from HUVEC cells, using WTAP antibody.



Western Blotting

Image 2. Western blot analysis of extracts from various samples, using WTAP Antibody. Lane 1: mouse brain treated with blocking peptide; Lane 2: mouse brain; Lane 3: rat brain;



Immunofluorescence (fixed cells)

Image 3. ABIN6274359 staining HuvEc cells by IF/ICC. The sample were fixed with PFA and permeabilized in 0.1% Triton X-100, then blocked in 10% serum for 45 minutes at 25°C. The primary antibody was diluted at 1/200 and incubated with the sample for 1 hour at 37°C. An Alexa Fluor 594 conjugated goat anti-rabbit IgG (H+L) antibody (Cat.# S0006), diluted at 1/600, was used as secondary antibody.