

Datasheet for ABIN6257584 anti-CK1 epsilon antibody (Internal Region)

[Go to Product page](#)

4 Images

Overview

Quantity:	100 µL
Target:	CK1 epsilon (CSNK1E)
Binding Specificity:	Internal Region
Reactivity:	Human, Mouse
Host:	Rabbit
Clonality:	Polyclonal
Conjugate:	This CK1 epsilon antibody is un-conjugated
Application:	Western Blotting (WB), ELISA, Immunohistochemistry (IHC), Immunofluorescence (IF), Immunocytochemistry (ICC)

Product Details

Immunogen:	A synthesized peptide derived from human CKI epsilon, corresponding to a region within the internal amino acids.
Isotype:	IgG
Specificity:	CKI epsilon Antibody detects endogenous levels of total CKI epsilon.
Predicted Reactivity:	Dog,Chicken,Xenopus
Purification:	The antiserum was purified by peptide affinity chromatography using SulfoLink™ Coupling Resin (Thermo Fisher Scientific).

Target Details

Target:	CK1 epsilon (CSNK1E)
---------	----------------------

Target Details

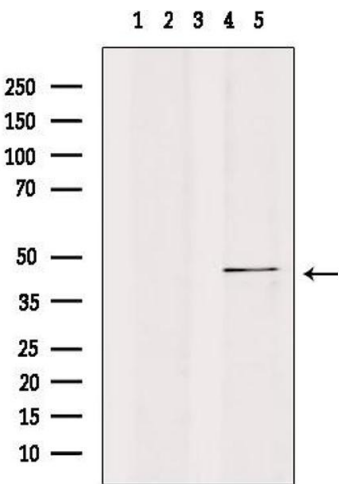
Alternative Name:	CSNK1E (CSNK1E Products)
Background:	<p>Description: Casein kinases are operationally defined by their preferential utilization of acidic proteins such as caseins as substrates. Can phosphorylate a large number of proteins.</p> <p>Participates in Wnt signaling. Phosphorylates DVL1 and DVL2. Central component of the circadian clock. In balance with PP1, determines the circadian period length, through the regulation of the speed and rhythmicity of PER1 and PER2 phosphorylation. Controls PER1 and PER2 nuclear transport and degradation. Inhibits cytokine-induced granulocytic differentiation.</p> <p>Gene: CSNK1E</p>
Molecular Weight:	47 kDa
Gene ID:	102800317, 1454
UniProt:	P49674
Pathways:	Hedgehog Signaling, M Phase

Application Details

Application Notes:	WB 1:500-1:1000, IHC: 1:50-1:200, IF/ICC 1:100-1:500, ELISA(peptide) 1:20000-1:40000
Restrictions:	For Research Use only

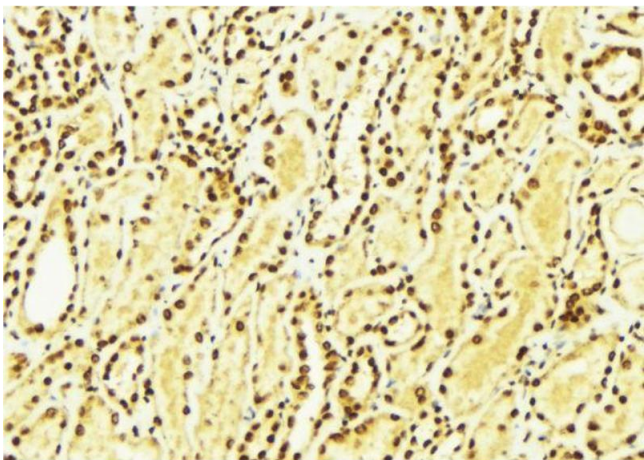
Handling

Format:	Liquid
Concentration:	1 mg/mL
Buffer:	Rabbit IgG in phosphate buffered saline , pH 7.4, 150 mM NaCl, 0.02 % sodium azide and 50 % glycerol.
Preservative:	Sodium azide
Precaution of Use:	This product contains Sodium azide: a POISONOUS AND HAZARDOUS SUBSTANCE which should be handled by trained staff only.
Storage:	-20 °C
Storage Comment:	Store at -20 °C. Stable for 12 months from date of receipt.
Expiry Date:	12 months



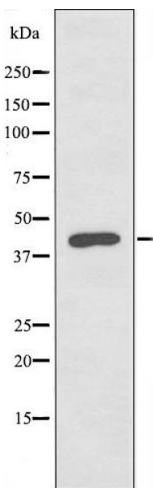
Western Blotting

Image 1. Western blot analysis of extracts from mouse brain, using CKI-ε Antibody. Lane 1 was treated with the blocking peptide.



Immunohistochemistry

Image 2. ABIN6274265 at 1/100 staining Mouse kidney tissue by IHC-P. The sample was formaldehyde fixed and a heat mediated antigen retrieval step in citrate buffer was performed. The sample was then blocked and incubated with the antibody for 1.5 hours at 22°C. An HRP conjugated goat anti-rabbit antibody was used as the secondary.



Western Blotting

Image 3. Western blot analysis of extracts from LOVO cells, using CKI-ε antibody.

Please check the [product details page](#) for more images. Overall 4 images are available for ABIN6257584.