

Datasheet for ABIN6257591
anti-CPM antibody (Internal Region)[Go to Product page](#)

2 Images

Overview

Quantity:	100 µL
Target:	CPM
Binding Specificity:	Internal Region
Reactivity:	Human
Host:	Rabbit
Clonality:	Polyclonal
Conjugate:	This CPM antibody is un-conjugated
Application:	Western Blotting (WB), ELISA, Immunocytochemistry (ICC), Immunofluorescence (IF)

Product Details

Immunogen:	A synthesized peptide derived from human CPM, corresponding to a region within the internal amino acids.
Isotype:	IgG
Specificity:	CPM Antibody detects endogenous levels of total CPM.
Predicted Reactivity:	Bovine,Horse,Sheep,Rabbit,Dog
Purification:	The antiserum was purified by peptide affinity chromatography using SulfoLink™ Coupling Resin (Thermo Fisher Scientific).

Target Details

Target:	CPM
---------	-----

Target Details

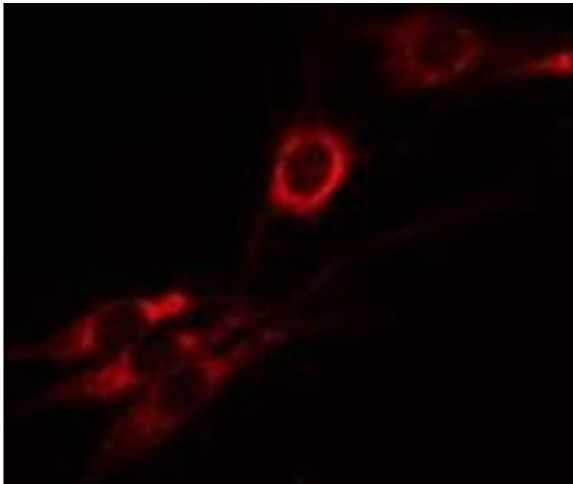
Alternative Name:	CPM (CPM Products)
Background:	<p>Description: Specifically removes C-terminal basic residues (Arg or Lys) from peptides and proteins. It is believed to play important roles in the control of peptide hormone and growth factor activity at the cell surface, and in the membrane-localized degradation of extracellular proteins.</p> <p>Gene: CPM</p>
Molecular Weight:	51 kDa
Gene ID:	1368
UniProt:	P14384

Application Details

Application Notes:	WB 1:500-1:1000, IF/ICC 1:100-1:500, ELISA(peptide) 1:20000-1:40000
Restrictions:	For Research Use only

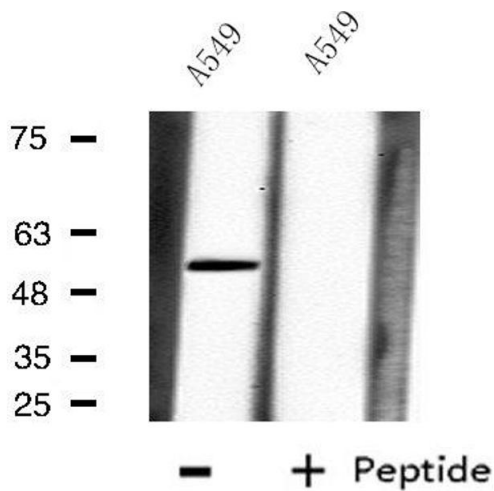
Handling

Format:	Liquid
Concentration:	1 mg/mL
Buffer:	Rabbit IgG in phosphate buffered saline , pH 7.4, 150 mM NaCl, 0.02 % sodium azide and 50 % glycerol.
Preservative:	Sodium azide
Precaution of Use:	This product contains Sodium azide: a POISONOUS AND HAZARDOUS SUBSTANCE which should be handled by trained staff only.
Storage:	-20 °C
Storage Comment:	Store at -20 °C. Stable for 12 months from date of receipt.
Expiry Date:	12 months



Immunofluorescence (fixed cells)

Image 1. ABIN6274970 staining A549 by IF/ICC. The sample were fixed with PFA and permeabilized in 0.1% Triton X-100, then blocked in 10% serum for 45 minutes at 25°C. The primary antibody was diluted at 1/200 and incubated with the sample for 1 hour at 37°C. An Alexa Fluor 594 conjugated goat anti-rabbit IgG (H+L) Ab, diluted at 1/600, was used as the secondary antibody



Western Blotting

Image 2. Western blot analysis of extracts from A549 cells, using CPM antibody.