

## Datasheet for ABIN6257595 anti-CENPM antibody (Internal Region)

[Go to Product page](#)

### 2 Images

#### Overview

Quantity:	100 µL
Target:	CENPM
Binding Specificity:	Internal Region
Reactivity:	Human, Mouse
Host:	Rabbit
Clonality:	Polyclonal
Conjugate:	This CENPM antibody is un-conjugated
Application:	Western Blotting (WB), ELISA, Immunohistochemistry (IHC)

#### Product Details

Immunogen:	A synthesized peptide derived from human CENPM, corresponding to a region within the internal amino acids.
Isotype:	IgG
Specificity:	CENPM Antibody detects endogenous levels of total CENPM.
Predicted Reactivity:	Pig,Bovine,Sheep,Dog
Purification:	The antiserum was purified by peptide affinity chromatography using SulfoLink™ Coupling Resin (Thermo Fisher Scientific).

#### Target Details

Target:	CENPM
---------	-------

## Target Details

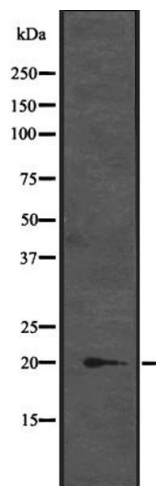
Alternative Name:	CENPM ( <a href="#">CENPM Products</a> )
Background:	<p>Description: Component of the CENPA-NAC (nucleosome-associated) complex, a complex that plays a central role in assembly of kinetochore proteins, mitotic progression and chromosome segregation. The CENPA-NAC complex recruits the CENPA-CAD (nucleosome distal) complex and may be involved in incorporation of newly synthesized CENPA into centromeres.</p> <p>Gene: CENPM</p>
Molecular Weight:	20kDa
Gene ID:	79019
UniProt:	<a href="#">Q9NSP4</a>

## Application Details

Application Notes:	WB 1:500-1:2000, IHC 1:50-1:200, ELISA(peptide) 1:20000-1:40000
Restrictions:	For Research Use only

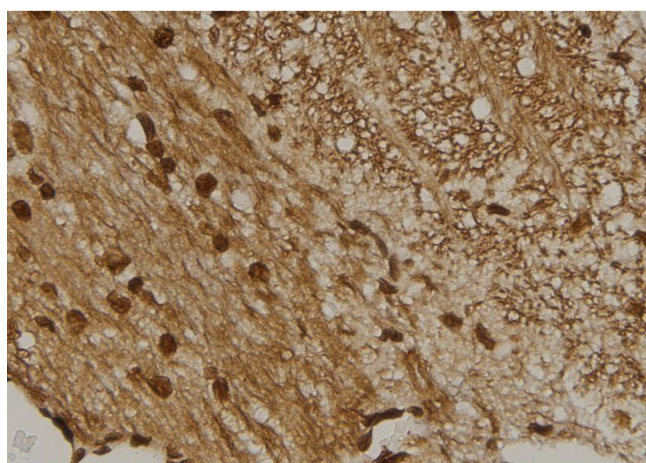
## Handling

Format:	Liquid
Concentration:	1 mg/mL
Buffer:	Rabbit IgG in phosphate buffered saline, pH 7.4, 150 mM NaCl, 0.02 % sodium azide and 50 % glycerol.
Preservative:	Sodium azide
Precaution of Use:	This product contains Sodium azide: a POISONOUS AND HAZARDOUS SUBSTANCE which should be handled by trained staff only.
Storage:	-20 °C
Expiry Date:	12 months



### Western Blotting

**Image 1.** Western blot analysis of CENPM expression in K-562 cell lysate at 25ug/lane, The lane on the left is treated with the antigen-specific peptide.



### Immunohistochemistry

**Image 2.** ABIN6273461 at 1/100 staining Mouse brain tissue by IHC-P. The sample was formaldehyde fixed and a heat mediated antigen retrieval step in citrate buffer was performed. The sample was then blocked and incubated with the antibody for 1.5 hours at 22°C. An HRP conjugated goat anti-rabbit antibody was used as the secondary.