

Datasheet for ABIN6257607
anti-IL11RA antibody (C-Term)[Go to Product page](#)

4 Images

Overview

Quantity:	100 µL
Target:	IL11RA
Binding Specificity:	C-Term
Reactivity:	Human, Mouse, Rat
Host:	Rabbit
Clonality:	Polyclonal
Conjugate:	This IL11RA antibody is un-conjugated
Application:	Western Blotting (WB), ELISA, Immunohistochemistry (IHC), Immunocytochemistry (ICC), Immunofluorescence (IF)

Product Details

Immunogen:	A synthesized peptide derived from human IL11RA, corresponding to a region within C-terminal amino acids.
Isotype:	IgG
Specificity:	IL11RA Antibody detects endogenous levels of total IL11RA.
Predicted Reactivity:	Rabbit
Purification:	The antiserum was purified by peptide affinity chromatography using SulfoLink™ Coupling Resin (Thermo Fisher Scientific).

Target Details

Target:	IL11RA
---------	--------

Target Details

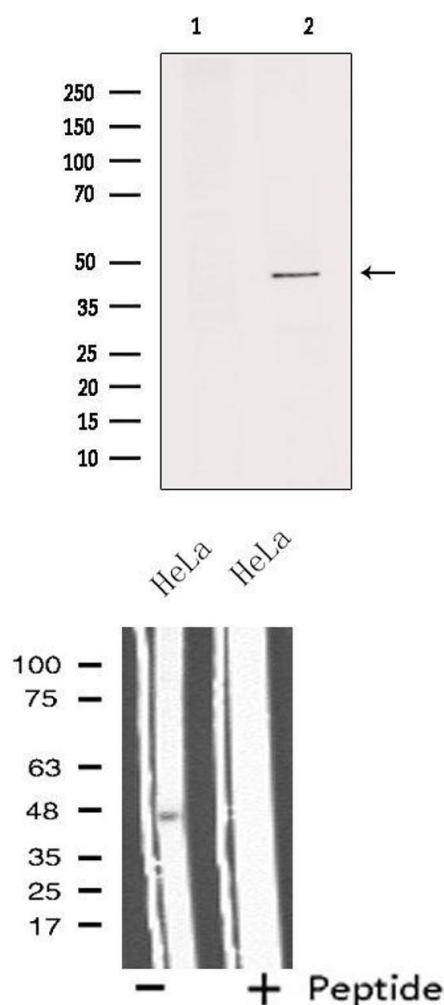
Alternative Name:	IL11RA (IL11RA Products)
Background:	<p>Description: Receptor for interleukin-11. The receptor systems for IL6, LIF, OSM, CNTF, IL11 and CT1 can utilize IL6ST for initiating signal transmission. The IL11/IL11RA/IL6ST complex may be involved in the control of proliferation and/or differentiation of skeletogenic progenitor or other mesenchymal cells. Essential for the normal development of craniofacial bones and teeth. Restricts suture fusion and tooth number.</p> <p>Gene: IL11RA</p>
Molecular Weight:	45 kDa
Gene ID:	3590
UniProt:	Q14626
Pathways:	JAK-STAT Signaling , Growth Factor Binding

Application Details

Application Notes:	WB 1:500-1:1000, IHC 1:50-1:200, IF/ICC 1:100-1:500, ELISA(peptide) 1:20000-1:40000
Restrictions:	For Research Use only

Handling

Format:	Liquid
Concentration:	1 mg/mL
Buffer:	Rabbit IgG in phosphate buffered saline , pH 7.4, 150 mM NaCl, 0.02 % sodium azide and 50 % glycerol.
Preservative:	Sodium azide
Precaution of Use:	This product contains Sodium azide: a POISONOUS AND HAZARDOUS SUBSTANCE which should be handled by trained staff only.
Storage:	-20 °C
Storage Comment:	Store at -20 °C. Stable for 12 months from date of receipt.
Expiry Date:	12 months

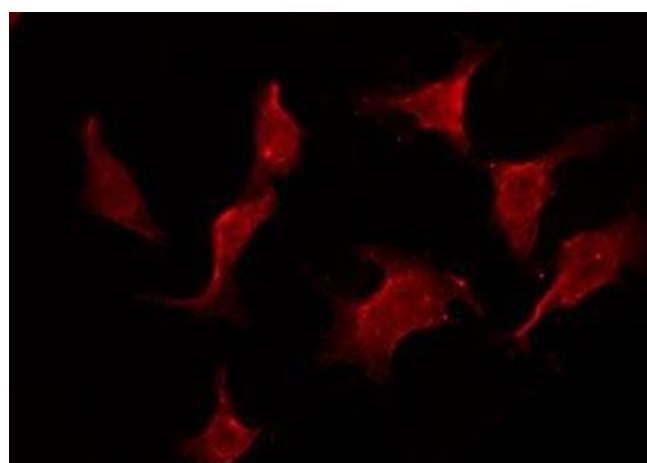


Western Blotting

Image 1. Western blot analysis of extracts from rat brain, using IL11RA Antibody. Lane 1 was treated with the antigen-specific peptide.

Western Blotting

Image 2. Western blot analysis of extracts from HeLa cells, using IL11RA antibody.



Immunofluorescence (fixed cells)

Image 3. ABIN6275769 staining HeLa by IF/ICC. The sample were fixed with PFA and permeabilized in 0.1% Triton X-100, then blocked in 10% serum for 45 minutes at 25°C. The primary antibody was diluted at 1/200 and incubated with the sample for 1 hour at 37°C. An Alexa Fluor 594 conjugated goat anti-rabbit IgG (H+L) Ab, diluted at 1/600, was used as the secondary antibody.

Please check the [product details page](#) for more images. Overall 4 images are available for ABIN6257607.