



[Go to Product page](#)

Datasheet for ABIN6257608
anti-IL12RB2 antibody (C-Term)

1 Image

Overview

Quantity:	100 µL
Target:	IL12RB2
Binding Specificity:	C-Term
Reactivity:	Human, Mouse
Host:	Rabbit
Clonality:	Polyclonal
Conjugate:	This IL12RB2 antibody is un-conjugated
Application:	Western Blotting (WB), ELISA

Product Details

Immunogen:	A synthesized peptide derived from human IL12RB2, corresponding to a region within C-terminal amino acids.
Isotype:	IgG
Specificity:	IL12RB2 Antibody detects endogenous levels of total IL12RB2.
Predicted Reactivity:	Pig,Bovine,Dog
Purification:	The antiserum was purified by peptide affinity chromatography using SulfoLink™ Coupling Resin (Thermo Fisher Scientific).

Target Details

Target:	IL12RB2
---------	---------

Target Details

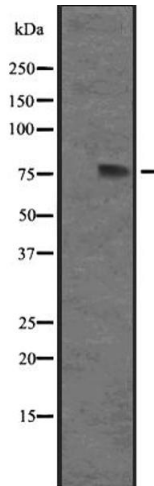
Alternative Name:	IL12RB2 (IL12RB2 Products)
Background:	Description: Receptor for interleukin-12. This subunit is the signaling component coupling to the JAK2/STAT4 pathway. Promotes the proliferation of T-cells as well as NK cells. Induces the promotion of T-cells towards the Th1 phenotype by strongly enhancing IFN-gamma production. Gene: IL12RB2
Molecular Weight:	75 kDa
Gene ID:	3595
UniProt:	Q99665
Pathways:	JAK-STAT Signaling

Application Details

Application Notes:	WB 1:500-1:2000, ELISA(peptide) 1:20000-1:40000
Restrictions:	For Research Use only

Handling

Format:	Liquid
Concentration:	1 mg/mL
Buffer:	Rabbit IgG in phosphate buffered saline, pH 7.4, 150 mM NaCl, 0.02 % sodium azide and 50 % glycerol.
Preservative:	Sodium azide
Precaution of Use:	This product contains Sodium azide: a POISONOUS AND HAZARDOUS SUBSTANCE which should be handled by trained staff only.
Storage:	-20 °C
Expiry Date:	12 months



Western Blotting

Image 1. Western blot analysis of IL12RB2 expression in 721_B whole cell lysate ,The lane on the left is treated with the antigen-specific peptide.