



[Go to Product page](#)

Datasheet for ABIN6257609
anti-IL17RD antibody (C-Term)

1 Image

Overview

Quantity:	100 µL
Target:	IL17RD
Binding Specificity:	C-Term
Reactivity:	Human, Mouse
Host:	Rabbit
Clonality:	Polyclonal
Conjugate:	This IL17RD antibody is un-conjugated
Application:	Western Blotting (WB), ELISA

Product Details

Immunogen:	A synthesized peptide derived from human IL17RD, corresponding to a region within C-terminal amino acids.
Isotype:	IgG
Specificity:	IL17RD Antibody detects endogenous levels of total IL17RD.
Predicted Reactivity:	Pig,Zebrafish,Bovine,Horse,Sheep,Rabbit,Dog,Chicken
Purification:	The antiserum was purified by peptide affinity chromatography using SulfoLink™ Coupling Resin (Thermo Fisher Scientific).

Target Details

Target:	IL17RD
---------	--------

Target Details

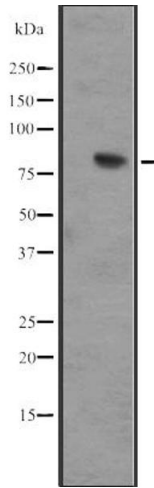
Alternative Name:	IL17RD (IL17RD Products)
Background:	<p>Description: Feedback inhibitor of fibroblast growth factor mediated Ras-MAPK signaling and ERK activation. May inhibit FGF-induced FGFR1 tyrosine phosphorylation. Regulates the nuclear ERK signaling pathway by spatially blocking nuclear translocation of activated ERK without inhibiting cytoplasmic phosphorylation of ERK. Mediates JNK activation and may be involved in apoptosis. Might have a role in the early stages of fate specification of GnRH-secreting neurons (By similarity).</p> <p>Gene: IL17RD</p>
Molecular Weight:	80 kDa
Gene ID:	54756
UniProt:	Q8NFM7
Pathways:	Toll-Like Receptors Cascades

Application Details

Application Notes:	WB 1:500-1:2000, ELISA(peptide) 1:20000-1:40000
Restrictions:	For Research Use only

Handling

Format:	Liquid
Concentration:	1 mg/mL
Buffer:	Rabbit IgG in phosphate buffered saline, pH 7.4, 150 mM NaCl, 0.02 % sodium azide and 50 % glycerol.
Preservative:	Sodium azide
Precaution of Use:	This product contains Sodium azide: a POISONOUS AND HAZARDOUS SUBSTANCE which should be handled by trained staff only.
Storage:	-20 °C
Expiry Date:	12 months



Western Blotting

Image 1. Western blot analysis of IL17RD expression in IMR32 whole cell lysate ,The lane on the left is treated with the antigen-specific peptide.