



Datasheet for ABIN6257619

## anti-Neurexophilin 4 antibody (Internal Region)



[Go to Product page](#)

### 3 Images

#### Overview

Quantity:	100 µL
Target:	Neurexophilin 4 (NXPH4)
Binding Specificity:	Internal Region
Reactivity:	Human, Rat, Mouse
Host:	Rabbit
Clonality:	Polyclonal
Conjugate:	This Neurexophilin 4 antibody is un-conjugated
Application:	Western Blotting (WB), ELISA, Immunohistochemistry (IHC), Immunocytochemistry (ICC), Immunofluorescence (IF)

#### Product Details

Immunogen:	A synthesized peptide derived from human NXPH4, corresponding to a region within the internal amino acids.
Isotype:	IgG
Specificity:	NXPH4 Antibody detects endogenous levels of total NXPH4.
Predicted Reactivity:	Pig,Bovine,Horse,Sheep,Dog
Purification:	The antiserum was purified by peptide affinity chromatography using SulfoLink™ Coupling Resin (Thermo Fisher Scientific).

#### Target Details

Target:	Neurexophilin 4 (NXPH4)
---------	-------------------------

## Target Details

---

Alternative Name:	NXPH4 ( <a href="#">NXPH4 Products</a> )
Background:	Description: May be signaling molecules that resemble neuropeptides and that act by binding to alpha-neurexins and possibly other receptors. Gene: NXPH4
Molecular Weight:	33 kDa
Gene ID:	11247
UniProt:	<a href="#">O95158</a>

## Application Details

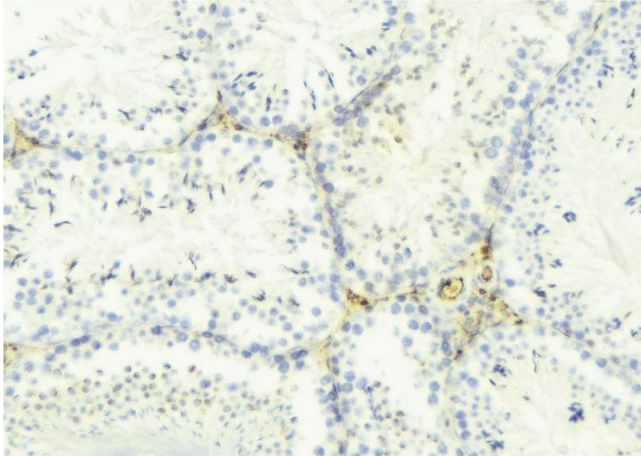
---

Application Notes:	WB 1:500-1:1000, IHC: 1:50-1:200, IF/ICC 1:100-1:500, ELISA(peptide) 1:20000-1:40000
Restrictions:	For Research Use only

## Handling

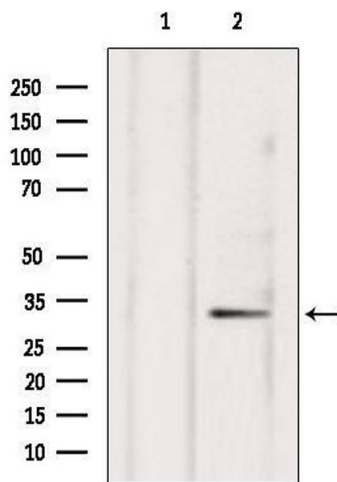
---

Format:	Liquid
Concentration:	1 mg/mL
Buffer:	Rabbit IgG in phosphate buffered saline , pH 7.4, 150 mM NaCl, 0.02 % sodium azide and 50 % glycerol.
Preservative:	Sodium azide
Precaution of Use:	This product contains Sodium azide: a POISONOUS AND HAZARDOUS SUBSTANCE which should be handled by trained staff only.
Storage:	-20 °C
Storage Comment:	Store at -20 °C. Stable for 12 months from date of receipt.
Expiry Date:	12 months



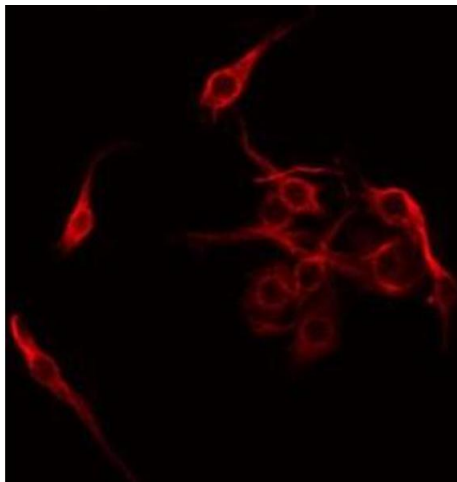
### Immunohistochemistry

**Image 1.** ABIN6275298 at 1/100 staining Mouse testis tissue by IHC-P. The sample was formaldehyde fixed and a heat mediated antigen retrieval step in citrate buffer was performed. The sample was then blocked and incubated with the antibody for 1.5 hours at 22°C. An HRP conjugated goat anti-rabbit antibody was used as the secondary



### Western Blotting

**Image 2.** Western blot analysis of extracts from hepg2, using NXPH4 Antibody. Lane 1 was treated with the blocking peptide.



### Immunofluorescence (fixed cells)

**Image 3.** ABIN6275298 staining COLO205 by IF/ICC. The sample were fixed with PFA and permeabilized in 0.1% Triton X-100, then blocked in 10% serum for 45 minutes at 25°C. The primary antibody was diluted at 1/200 and incubated with the sample for 1 hour at 37°C. An Alexa Fluor 594 conjugated goat anti-rabbit IgG (H+L) Ab, diluted at 1/600, was used as the secondary antibody