

Datasheet for ABIN6257631
anti-RPL10A antibody (C-Term)[Go to Product page](#)

2 Images

Overview

Quantity:	100 µL
Target:	RPL10A
Binding Specificity:	C-Term
Reactivity:	Human, Mouse, Rat
Host:	Rabbit
Clonality:	Polyclonal
Conjugate:	This RPL10A antibody is un-conjugated
Application:	Western Blotting (WB), ELISA, Immunofluorescence (IF), Immunocytochemistry (ICC)

Product Details

Immunogen:	A synthesized peptide derived from human RPL10A, corresponding to a region within C-terminal amino acids.
Isotype:	IgG
Specificity:	RPL10A Antibody detects endogenous levels of total RPL10A.
Predicted Reactivity:	Pig,Zebrafish,Bovine,Horse,Sheep,Rabbit,Dog,Chicken,Xenopus
Purification:	The antiserum was purified by peptide affinity chromatography using SulfoLink™ Coupling Resin (Thermo Fisher Scientific).

Target Details

Target:	RPL10A
---------	--------

Target Details

Alternative Name:	RPL10A (RPL10A Products)
-------------------	--

Background:	Description: Component of the large ribosomal subunit. Gene: RPL10A
-------------	--

Molecular Weight:	25 kDa
-------------------	--------

Gene ID:	4736
----------	------

UniProt:	P62906
----------	------------------------

Application Details

Application Notes:	WB 1:1000-3000, IF/ICC 1:100-1:500, ELISA(peptide) 1:20000-1:40000
--------------------	--

Restrictions:	For Research Use only
---------------	-----------------------

Handling

Format:	Liquid
---------	--------

Concentration:	1 mg/mL
----------------	---------

Buffer:	Rabbit IgG in phosphate buffered saline , pH 7.4, 150 mM NaCl, 0.02 % sodium azide and 50 % glycerol.
---------	---

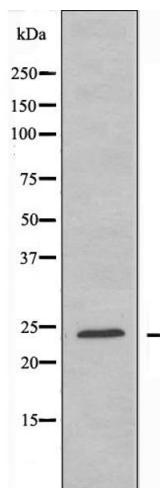
Preservative:	Sodium azide
---------------	--------------

Precaution of Use:	This product contains Sodium azide: a POISONOUS AND HAZARDOUS SUBSTANCE which should be handled by trained staff only.
--------------------	--

Storage:	-20 °C
----------	--------

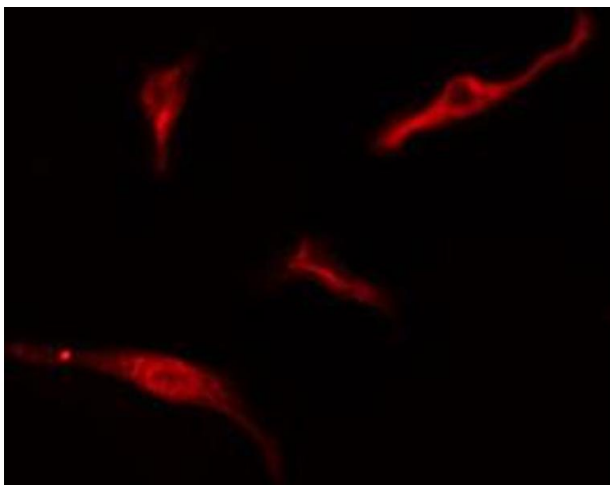
Storage Comment:	Store at -20 °C. Stable for 12 months from date of receipt.
------------------	---

Expiry Date:	12 months
--------------	-----------



Western Blotting

Image 1. Western blot analysis of extracts from HeLa cells using RPL10A antibody.



Immunofluorescence (fixed cells)

Image 2. ABIN6274765 staining HeLa cells by IF/ICC. The sample were fixed with PFA and permeabilized in 0.1% Triton X-100, then blocked in 10% serum for 45 minutes at 25°C. The primary antibody was diluted at 1/200 and incubated with the sample for 1 hour at 37°C. An Alexa Fluor 594 conjugated goat anti-rabbit IgG (H+L) antibody (Cat.# S0006), diluted at 1/600, was used as secondary antibody.