

Datasheet for ABIN6257637

**anti-RPL34 antibody**

3 Images

[Go to Product page](#)

## Overview

Quantity:	100 µL
Target:	RPL34
Reactivity:	Human, Mouse, Rat
Host:	Rabbit
Clonality:	Polyclonal
Conjugate:	This RPL34 antibody is un-conjugated
Application:	ELISA, Western Blotting (WB), Immunofluorescence (IF), Immunocytochemistry (ICC)

## Product Details

Immunogen:	A synthesized peptide
Isotype:	IgG
Specificity:	RPL34 Antibody detects endogenous levels of total RPL34
Cross-Reactivity:	Human, Mouse (Murine), Rat (Rattus)
Purification:	The antiserum was purified by peptide affinity chromatography using SulfoLink™ Coupling Resin (Thermo Fisher Scientific).

## Target Details

Target:	RPL34
Alternative Name:	RPL34 ( <a href="#">RPL34 Products</a> )
Background:	Description: Component of the large ribosomal subunit.

## Target Details

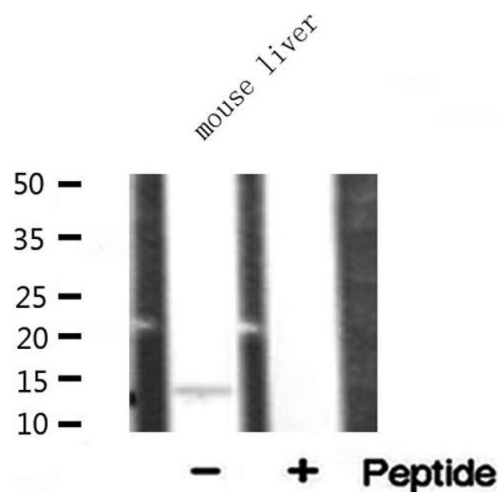
	Gene: RPL34
Molecular Weight:	13 kDa
Gene ID:	6164
UniProt:	<a href="#">P49207</a>

## Application Details

Application Notes:	WB 1:500~1:1000 IF/ICC 1:100-1:500
Restrictions:	For Research Use only

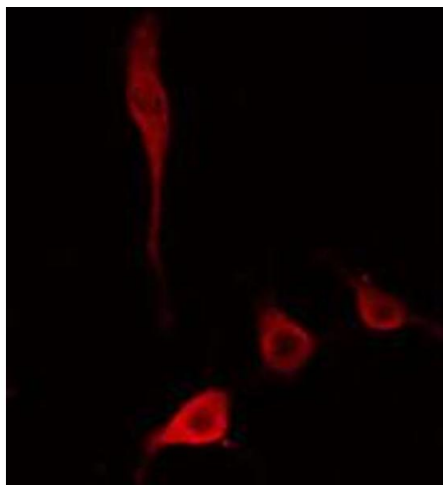
## Handling

Format:	Liquid
Concentration:	1 mg/mL
Buffer:	Rabbit IgG in phosphate buffered saline , pH 7.4, 150 mM NaCl, 0.02 % sodium azide and 50 % glycerol.
Preservative:	Sodium azide
Precaution of Use:	This product contains Sodium azide: a POISONOUS AND HAZARDOUS SUBSTANCE which should be handled by trained staff only.
Storage:	-20 °C
Storage Comment:	Store at -20 °C.Stable for 12 months from date of receipt
Expiry Date:	12 months



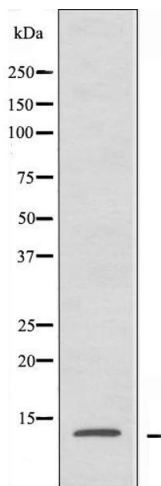
#### Western Blotting

**Image 1.** Western blot analysis of RPL34 expression in mouse liver lysate



#### Immunofluorescence (fixed cells)

**Image 2.** ABIN6274779 staining HepG2 cells by IF/ICC. The sample were fixed with PFA and permeabilized in 0.1% Triton X-100, then blocked in 10% serum for 45 minutes at 25°C. The primary antibody was diluted at 1/200 and incubated with the sample for 1 hour at 37°C. An Alexa Fluor 594 conjugated goat anti-rabbit IgG (H+L) antibody (Cat.# S0006), diluted at 1/600, was used as secondary antibody.



#### Western Blotting

**Image 3.** Western blot analysis of extracts from HepG2 cells, using RPL34 antibody.