

Datasheet for ABIN6257638  
**anti-RPL36 antibody (C-Term)**[Go to Product page](#)

## 4 Images

## Overview

Quantity:	100 µL
Target:	RPL36
Binding Specificity:	C-Term
Reactivity:	Human, Mouse, Rat
Host:	Rabbit
Clonality:	Polyclonal
Conjugate:	This RPL36 antibody is un-conjugated
Application:	Western Blotting (WB), Immunohistochemistry (IHC), ELISA, Immunofluorescence (IF), Immunocytochemistry (ICC)

## Product Details

Immunogen:	A synthesized peptide derived from human RPL36, corresponding to a region within C-terminal amino acids.
Isotype:	IgG
Specificity:	RPL36 Antibody detects endogenous levels of total RPL36.
Predicted Reactivity:	Zebrafish,Bovine,Sheep,Chicken,Xenopus
Purification:	The antiserum was purified by peptide affinity chromatography using SulfoLink™ Coupling Resin (Thermo Fisher Scientific).

## Target Details

Target:	RPL36
---------	-------

## Target Details

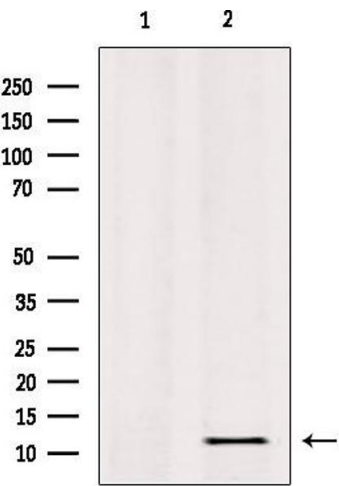
Alternative Name:	RPL36 ( <a href="#">RPL36 Products</a> )
Background:	Description: Component of the large ribosomal subunit. Gene: RPL36
Molecular Weight:	12 kDa
Gene ID:	25873
UniProt:	<a href="#">Q9Y3U8</a>
Pathways:	<a href="#">SARS-CoV-2 Protein Interactome</a>

## Application Details

Application Notes:	WB 1:500-1:1000, IHC: 1:50-1:200, IF/ICC 1:100-1:500, ELISA(peptide) 1:20000-1:40000
Restrictions:	For Research Use only

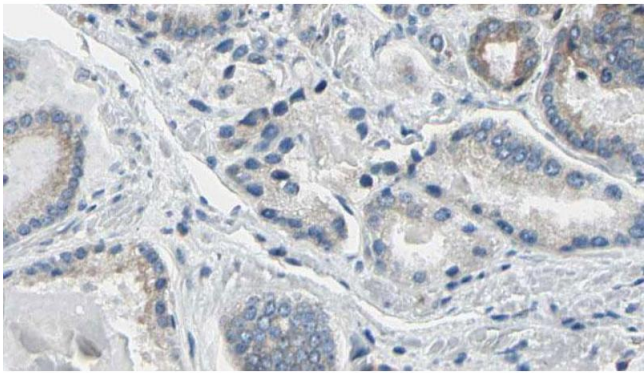
## Handling

Format:	Liquid
Concentration:	1 mg/mL
Buffer:	Rabbit IgG in phosphate buffered saline , pH 7.4, 150 mM NaCl, 0.02 % sodium azide and 50 % glycerol.
Preservative:	Sodium azide
Precaution of Use:	This product contains Sodium azide: a POISONOUS AND HAZARDOUS SUBSTANCE which should be handled by trained staff only.
Storage:	-20 °C
Storage Comment:	Store at -20 °C. Stable for 12 months from date of receipt.
Expiry Date:	12 months



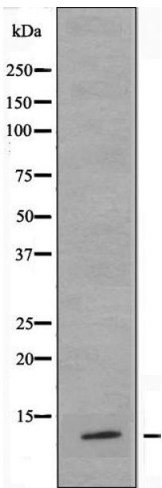
#### Western Blotting

**Image 1.** Western blot analysis of extracts from HepG2, using RPL36 Antibody. Lane 1 was treated with the blocking peptide.



#### Immunohistochemistry

**Image 2.** ABIN6274781 at 1/100 staining Human prostate tissue by IHC-P. The sample was formaldehyde fixed and a heat mediated antigen retrieval step in citrate buffer was performed. The sample was then blocked and incubated with the antibody for 1.5 hours at 22°C. An HRP conjugated goat anti-rabbit antibody was used as the secondary.



#### Western Blotting

**Image 3.** Western blot analysis of extracts from COLO cells, using RPL36 antibody.

Please check the [product details page](#) for more images. Overall 4 images are available for ABIN6257638.