

Datasheet for ABIN6257661  
**anti-AKAP5 antibody (N-Term)**[Go to Product page](#)

## 3 Images

## Overview

Quantity:	100 µL
Target:	AKAP5
Binding Specificity:	N-Term
Reactivity:	Human, Mouse
Host:	Rabbit
Clonality:	Polyclonal
Conjugate:	This AKAP5 antibody is un-conjugated
Application:	Western Blotting (WB), ELISA, Immunofluorescence (IF), Immunocytochemistry (ICC)

## Product Details

Immunogen:	A synthesized peptide derived from human AKAP5, corresponding to a region within N-terminal amino acids.
Isotype:	IgG
Specificity:	AKAP5 Antibody detects endogenous levels of total AKAP5.
Predicted Reactivity:	Pig,Horse,Dog
Purification:	The antiserum was purified by peptide affinity chromatography using SulfoLink™ Coupling Resin (Thermo Fisher Scientific).

## Target Details

Target:	AKAP5
---------	-------

## Target Details

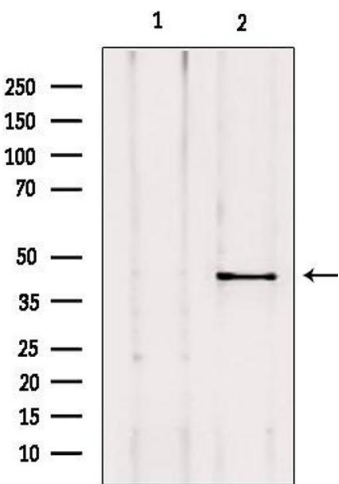
Alternative Name:	AKAP5 ( <a href="#">AKAP5 Products</a> )
Target Type:	Viral Protein
Background:	<p>Description: May anchor the PKA protein to cytoskeletal and/or organelle-associated proteins, targeting the signal carried by cAMP to specific intracellular effectors. Association with to the beta2-adrenergic receptor (beta2-AR) not only regulates beta2-AR signaling pathway, but also the activation by PKA by switching off the beta2-AR signaling cascade.</p> <p>Gene: AKAP5</p>
Molecular Weight:	47 kDa
Gene ID:	9495
UniProt:	<a href="#">P24588</a>
Pathways:	<a href="#">cAMP Metabolic Process</a>

## Application Details

Application Notes:	WB 1:500-1:1000, IF/ICC 1:100-1:500, ELISA(peptide) 1:20000-1:40000
Restrictions:	For Research Use only

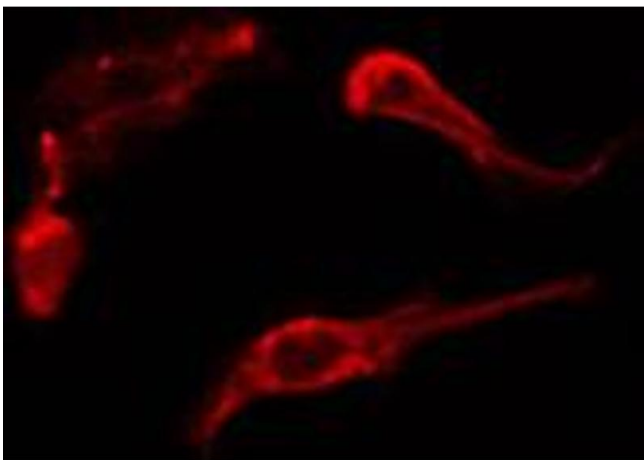
## Handling

Format:	Liquid
Concentration:	1 mg/mL
Buffer:	Rabbit IgG in phosphate buffered saline , pH 7.4, 150 mM NaCl, 0.02 % sodium azide and 50 % glycerol.
Preservative:	Sodium azide
Precaution of Use:	This product contains Sodium azide: a POISONOUS AND HAZARDOUS SUBSTANCE which should be handled by trained staff only.
Storage:	-20 °C
Storage Comment:	Store at -20 °C. Stable for 12 months from date of receipt.
Expiry Date:	12 months



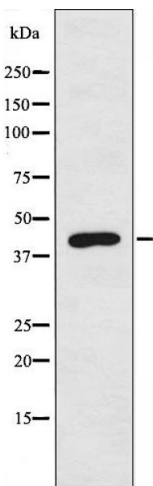
### Western Blotting

**Image 1.** Western blot analysis of extracts from mouse lung, using AKAP5 Antibody. Lane 1 was treated with the blocking peptide.



### Immunofluorescence (fixed cells)

**Image 2.** ABIN6274208 staining HepG2 cells by IF/ICC. The sample were fixed with PFA and permeabilized in 0.1% Triton X-100, then blocked in 10% serum for 45 minutes at 25°C. The primary antibody was diluted at 1/200 and incubated with the sample for 1 hour at 37°C. An Alexa Fluor 594 conjugated goat anti-rabbit IgG (H+L) antibody (Cat.# S0006), diluted at 1/600, was used as secondary antibody.



### Western Blotting

**Image 3.** Western blot analysis of extracts from HepG2 cells using AKAP5 antibody.