



[Go to Product page](#)

Datasheet for ABIN6257663  
**anti-ADCK5 antibody (N-Term)**

3 Images

### Overview

Quantity:	100 µL
Target:	ADCK5
Binding Specificity:	N-Term
Reactivity:	Human, Mouse
Host:	Rabbit
Clonality:	Polyclonal
Conjugate:	This ADCK5 antibody is un-conjugated
Application:	Western Blotting (WB), ELISA, Immunohistochemistry (IHC), Immunofluorescence (IF), Immunocytochemistry (ICC)

### Product Details

Immunogen:	A synthesized peptide derived from human ADCK5, corresponding to a region within N-terminal amino acids.
Isotype:	IgG
Specificity:	ADCK5 Antibody detects endogenous levels of total ADCK5.
Purification:	The antiserum was purified by peptide affinity chromatography using SulfoLink™ Coupling Resin (Thermo Fisher Scientific).

### Target Details

Target:	ADCK5
Alternative Name:	ADCK5 ( <a href="#">ADCK5 Products</a> )

## Target Details

---

Background:	Description: The function of this protein is not yet clear. It is not known if it has protein kinase activity and what type of substrate it would phosphorylate (Ser, Thr or Tyr). Gene: ADCK5
Molecular Weight:	66 kDa
Gene ID:	203054
UniProt:	<a href="#">Q3MIX3</a>

## Application Details

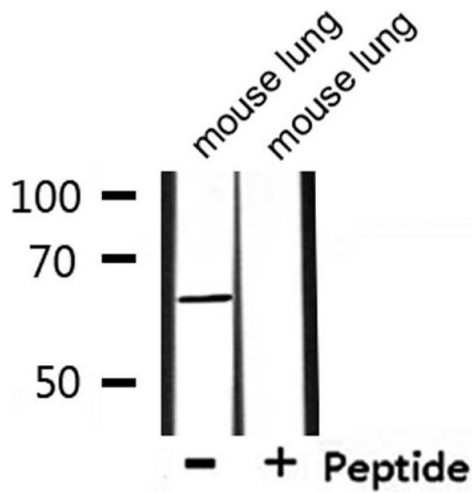
---

Application Notes:	WB 1:500-1:1000, IF/ICC 1:100-1:500, IHC 1:50-1:200, ELISA(peptide) 1:20000-1:40000
Restrictions:	For Research Use only

## Handling

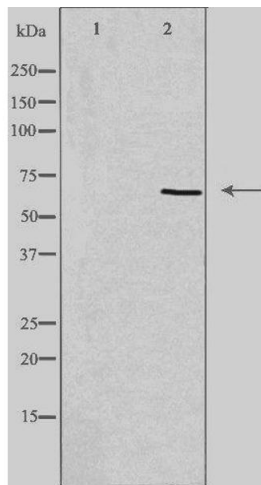
---

Format:	Liquid
Concentration:	1 mg/mL
Buffer:	Rabbit IgG in phosphate buffered saline , pH 7.4, 150 mM NaCl, 0.02 % sodium azide and 50 % glycerol.
Preservative:	Sodium azide
Precaution of Use:	This product contains Sodium azide: a POISONOUS AND HAZARDOUS SUBSTANCE which should be handled by trained staff only.
Storage:	-20 °C
Storage Comment:	Store at -20 °C. Stable for 12 months from date of receipt.
Expiry Date:	12 months



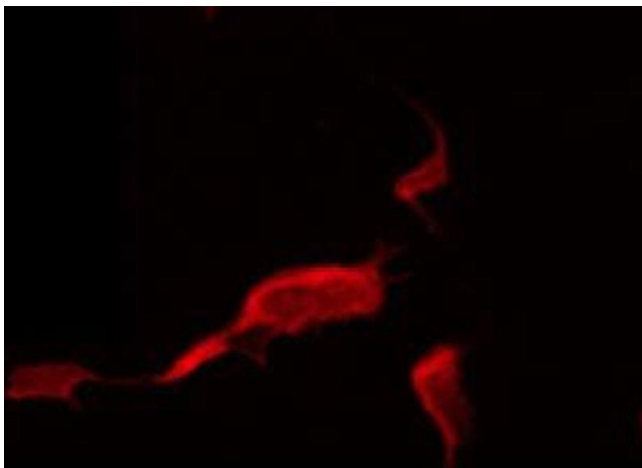
### Western Blotting

**Image 1.** Western blot analysis of extracts from mouse lung , using ADCK5 Antibody.



### Western Blotting

**Image 2.** Western blot analysis of extracts from HeLa cells using ADCK5 antibody.



### Immunofluorescence (fixed cells)

**Image 3.** ABIN6274388 staining HeLa by IF/ICC. The sample were fixed with PFA and permeabilized in 0.1% Triton X-100,then blocked in 10% serum for 45 minutes at 25°C. The primary antibody was diluted at 1/200 and incubated with the sample for 1 hour at 37°C. An Alexa Fluor 594 conjugated goat anti-rabbit IgG (H+L) Ab, diluted at 1/600, was used as the secondary antibody.