

Datasheet for ABIN6257699  
**anti-OB Cadherin antibody (Internal Region)**



[Go to Product page](#)

2 Images

1 Publication

## Overview

Quantity:	100 µL
Target:	OB Cadherin (CDH11)
Binding Specificity:	Internal Region
Reactivity:	Human, Mouse
Host:	Rabbit
Clonality:	Polyclonal
Conjugate:	This OB Cadherin antibody is un-conjugated
Application:	Western Blotting (WB), ELISA, Immunocytochemistry (ICC), Immunofluorescence (IF)

## Product Details

Immunogen:	A synthesized peptide derived from human CDH11, corresponding to a region within the internal amino acids.
Isotype:	IgG
Specificity:	CDH11 Antibody detects endogenous levels of total CDH11.
Predicted Reactivity:	Pig,Bovine,Horse,Sheep,Rabbit,Dog,Chicken
Purification:	The antiserum was purified by peptide affinity chromatography using SulfoLink™ Coupling Resin (Thermo Fisher Scientific).

## Target Details

Target:	OB Cadherin (CDH11)
---------	---------------------

## Target Details

---

Alternative Name: CDH11 ([CDH11 Products](#))

---

Background: Description: Cadherins are calcium-dependent cell adhesion proteins. They preferentially interact with themselves in a homophilic manner in connecting cells, cadherins may thus contribute to the sorting of heterogeneous cell types.

Gene: CDH11

---

Molecular Weight: 85 kDa

---

Gene ID: 1009

---

UniProt: [P55287](#)

---

## Application Details

---

Application Notes: WB 1:500-1:1000, IF/ICC 1:100-1:500, ELISA(peptide) 1:20000-1:40000

---

Restrictions: For Research Use only

---

## Handling

---

Format: Liquid

---

Concentration: 1 mg/mL

---

Buffer: Rabbit IgG in phosphate buffered saline , pH 7.4, 150 mM NaCl, 0.02 % sodium azide and 50 % glycerol.

---

Preservative: Sodium azide

---

Precaution of Use: This product contains Sodium azide: a POISONOUS AND HAZARDOUS SUBSTANCE which should be handled by trained staff only.

---

Storage: -20 °C

---

Storage Comment: Store at -20 °C. Stable for 12 months from date of receipt.

---

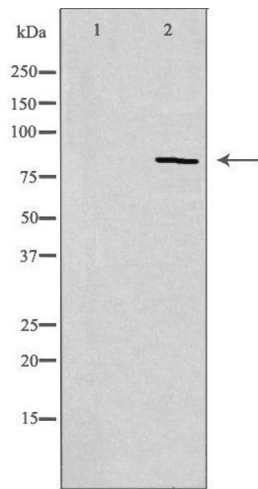
Expiry Date: 12 months

---

## Publications

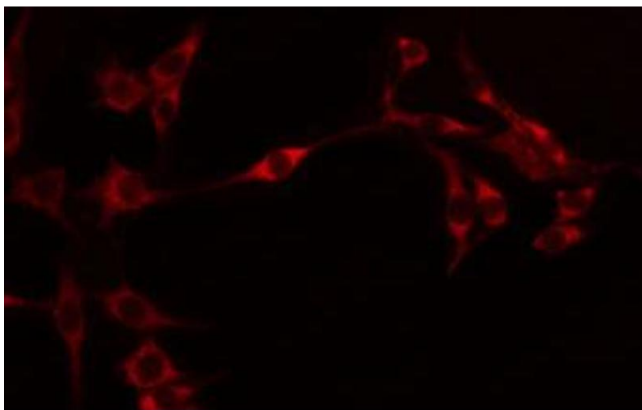
---

Product cited in: Bai, Wang, Han, Xie, Ji, Yin, Chen, Wang, Jiang, Qi, Jiang: "BCL2L10 inhibits growth and metastasis of hepatocellular carcinoma both in vitro and in vivo." in: **Molecular carcinogenesis**, Vol. 56, Issue 3, pp. 1137-1149, (2017) ([PubMed](#)).



### Western Blotting

**Image 1.** Western blot analysis of extracts from Jurkat cells, using CDH11 antibody.



### Immunofluorescence (fixed cells)

**Image 2.** ABIN6274595 staining HeLa by IF/ICC. The sample were fixed with PFA and permeabilized in 0.1% Triton X-100, then blocked in 10% serum for 45 minutes at 25°C. The primary antibody was diluted at 1/200 and incubated with the sample for 1 hour at 37°C. An Alexa Fluor 594 conjugated goat anti-rabbit IgG (H+L) Ab, diluted at 1/600, was used as the secondary antibody.