

Datasheet for ABIN6257738
anti-PSMD12 antibody (Internal Region)[Go to Product page](#)

3 Images

Overview

Quantity:	100 µL
Target:	PSMD12
Binding Specificity:	Internal Region
Reactivity:	Human, Mouse, Rat
Host:	Rabbit
Clonality:	Polyclonal
Conjugate:	This PSMD12 antibody is un-conjugated
Application:	Western Blotting (WB), ELISA, Immunofluorescence (IF), Immunocytochemistry (ICC)

Product Details

Immunogen:	A synthesized peptide derived from human PSMD12, corresponding to a region within the internal amino acids.
Isotype:	IgG
Specificity:	PSMD12 Antibody detects endogenous levels of total PSMD12.
Predicted Reactivity:	Pig,Zebrafish,Bovine,Horse,Sheep,Rabbit,Dog,Chicken,Xenopus
Purification:	The antiserum was purified by peptide affinity chromatography using SulfoLink™ Coupling Resin (Thermo Fisher Scientific).

Target Details

Target:	PSMD12
---------	--------

Target Details

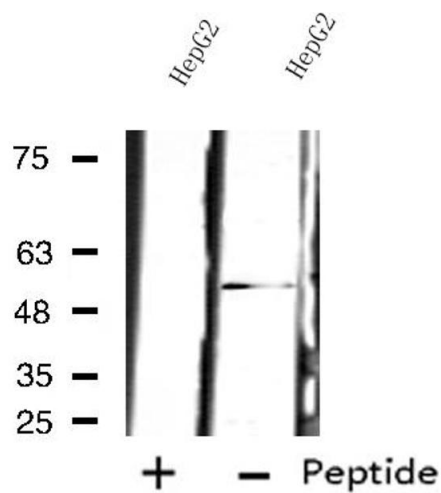
Alternative Name:	PSMD12 (PSMD12 Products)
Background:	<p>Description: Component of the 26S proteasome, a multiprotein complex involved in the ATP-dependent degradation of ubiquitinated proteins. This complex plays a key role in the maintenance of protein homeostasis by removing misfolded or damaged proteins, which could impair cellular functions, and by removing proteins whose functions are no longer required. Therefore, the proteasome participates in numerous cellular processes, including cell cycle progression, apoptosis, or DNA damage repair.</p> <p>Gene: PSMD12</p>
Molecular Weight:	50 kDa
Gene ID:	5718
UniProt:	O00232
Pathways:	Mitotic G1-G1/S Phases , DNA Replication , Synthesis of DNA , Ubiquitin Proteasome Pathway

Application Details

Application Notes:	WB 1:500-1:1000, IF/ICC 1:100-1:500, ELISA(peptide) 1:20000-1:40000
Restrictions:	For Research Use only

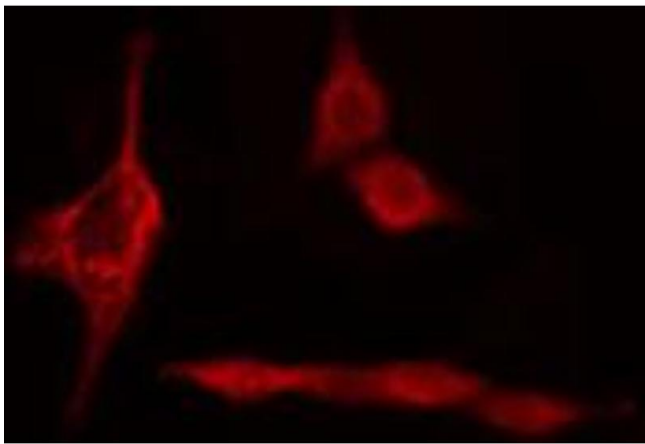
Handling

Format:	Liquid
Concentration:	1 mg/mL
Buffer:	Rabbit IgG in phosphate buffered saline , pH 7.4, 150 mM NaCl, 0.02 % sodium azide and 50 % glycerol.
Preservative:	Sodium azide
Precaution of Use:	This product contains Sodium azide: a POISONOUS AND HAZARDOUS SUBSTANCE which should be handled by trained staff only.
Storage:	-20 °C
Storage Comment:	Store at -20 °C. Stable for 12 months from date of receipt.
Expiry Date:	12 months



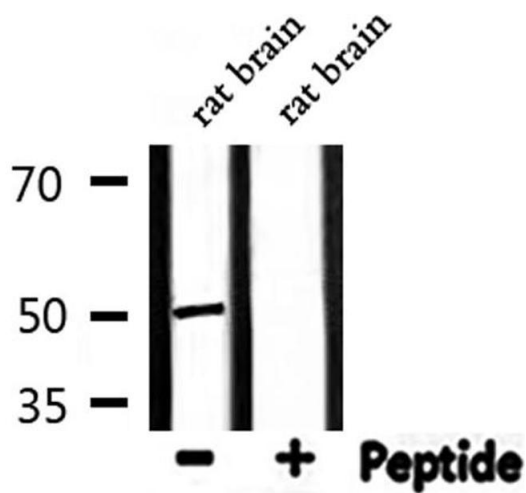
Western Blotting

Image 1. Western blot analysis of extracts from HepG2 cells, using PSMD12 antibody.



Immunofluorescence (fixed cells)

Image 2. ABIN6274715 staining HepG2 cells by IF/ICC. The sample were fixed with PFA and permeabilized in 0.1% Triton X-100, then blocked in 10% serum for 45 minutes at 25°C. The primary antibody was diluted at 1/200 and incubated with the sample for 1 hour at 37°C. An Alexa Fluor 594 conjugated goat anti-rabbit IgG (H+L) antibody (Cat.# S0006), diluted at 1/600, was used as secondary antibody.



Western Blotting

Image 3. Western blot analysis of extracts from rat brain, using PSMD12 Antibody.