

Datasheet for ABIN6257761  
**anti-KCNJ4 antibody (Internal Region)**

## 3 Images

[Go to Product page](#)

## Overview

Quantity:	100 µL
Target:	KCNJ4
Binding Specificity:	Internal Region
Reactivity:	Human, Mouse, Rat
Host:	Rabbit
Clonality:	Polyclonal
Conjugate:	This KCNJ4 antibody is un-conjugated
Application:	Western Blotting (WB), ELISA, Immunohistochemistry (IHC), Immunocytochemistry (ICC), Immunofluorescence (IF)

## Product Details

Immunogen:	A synthesized peptide derived from human KCNJ4, corresponding to a region within the internal amino acids.
Isotype:	IgG
Specificity:	KCNJ4 Antibody detects endogenous levels of total KCNJ4.
Predicted Reactivity:	Pig,Horse,Rabbit,Dog
Purification:	The antiserum was purified by peptide affinity chromatography using SulfoLink™ Coupling Resin (Thermo Fisher Scientific).

## Target Details

Target:	KCNJ4
---------	-------

## Target Details

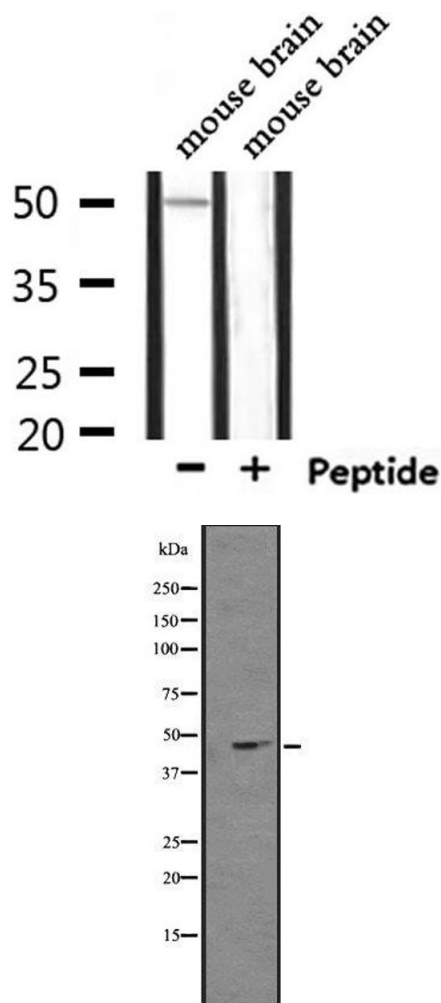
Alternative Name:	KCNJ4 ( <a href="#">KCNJ4 Products</a> )
Background:	<p>Description: Inward rectifier potassium channels are characterized by a greater tendency to allow potassium to flow into the cell rather than out of it. Their voltage dependence is regulated by the concentration of extracellular potassium, as external potassium is raised, the voltage range of the channel opening shifts to more positive voltages. The inward rectification is mainly due to the blockage of outward current by internal magnesium. Can be blocked by extracellular barium and cesium (By similarity).</p> <p>Gene: KCNJ4</p>
Molecular Weight:	50 kDa
Gene ID:	3761
UniProt:	<a href="#">P48050</a>

## Application Details

Application Notes:	WB 1:500-1:1000, IF/ICC 1:100-1:500, IHC 1:50-1:200, ELISA(peptide) 1:20000-1:40000
Restrictions:	For Research Use only

## Handling

Format:	Liquid
Concentration:	1 mg/mL
Buffer:	Rabbit IgG in phosphate buffered saline , pH 7.4, 150 mM NaCl, 0.02 % sodium azide and 50 % glycerol.
Preservative:	Sodium azide
Precaution of Use:	This product contains Sodium azide: a POISONOUS AND HAZARDOUS SUBSTANCE which should be handled by trained staff only.
Storage:	-20 °C
Storage Comment:	Store at -20 °C. Stable for 12 months from date of receipt.
Expiry Date:	12 months

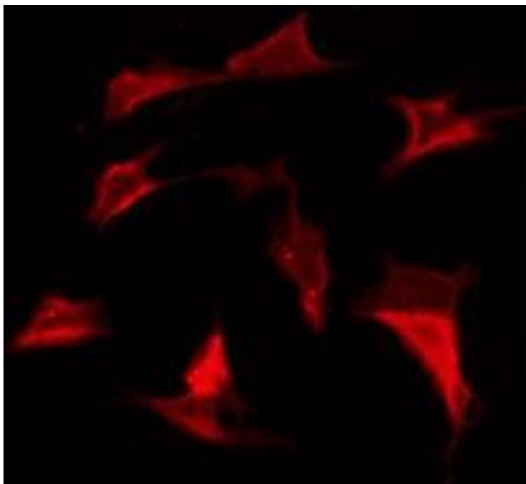


Western Blotting

**Image 1.** Western blot analysis of extracts from mouse brain, using KCNJ4 Antibody.

Western Blotting

**Image 2.** Western blot analysis of extracts from 293 cells, using KCNJ4 antibody.



Immunofluorescence (fixed cells)

**Image 3.** ABIN6275829 staining 293 by IF/ICC. The sample were fixed with PFA and permeabilized in 0.1% Triton X-100, then blocked in 10% serum for 45 minutes at 25°C. The primary antibody was diluted at 1/200 and incubated with the sample for 1 hour at 37°C. An Alexa Fluor 594 conjugated goat anti-rabbit IgG (H+L) Ab, diluted at 1/600, was used as the secondary antibody.