

Datasheet for ABIN6257762
anti-KCNJ9 antibody (C-Term)[Go to Product page](#)

1 Image

Overview

Quantity:	100 µL
Target:	KCNJ9
Binding Specificity:	C-Term
Reactivity:	Human, Mouse, Rat
Host:	Rabbit
Clonality:	Polyclonal
Conjugate:	This KCNJ9 antibody is un-conjugated
Application:	Western Blotting (WB), ELISA, Immunocytochemistry (ICC), Immunofluorescence (IF)

Product Details

Immunogen:	A synthesized peptide derived from human KCNJ9, corresponding to a region within C-terminal amino acids.
Isotype:	IgG
Specificity:	KCNJ9 Antibody detects endogenous levels of total KCNJ9.
Predicted Reactivity:	Pig,Zebrafish,Bovine,Sheep,Dog
Purification:	The antiserum was purified by peptide affinity chromatography using SulfoLink™ Coupling Resin (Thermo Fisher Scientific).

Target Details

Target:	KCNJ9
---------	-------

Target Details

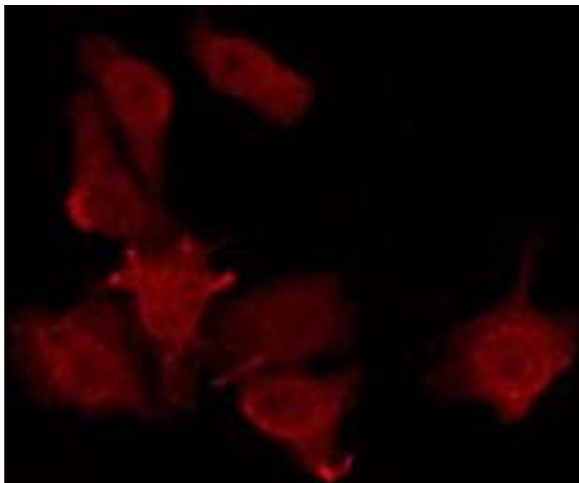
Alternative Name:	KCNJ9 (KCNJ9 Products)
Background:	<p>Description: This receptor is controlled by G proteins. Inward rectifier potassium channels are characterized by a greater tendency to allow potassium to flow into the cell rather than out of it. Their voltage dependence is regulated by the concentration of extracellular potassium, as external potassium is raised, the voltage range of the channel opening shifts to more positive voltages. The inward rectification is mainly due to the blockage of outward current by internal magnesium (By similarity).</p> <p>Gene: KCNJ9</p>
Molecular Weight:	44 kDa
Gene ID:	3765
UniProt:	Q92806

Application Details

Application Notes:	WB 1:500-1:1000, IF/ICC 1:100-1:500, ELISA(peptide) 1:20000-1:40000
Restrictions:	For Research Use only

Handling

Format:	Liquid
Concentration:	1 mg/mL
Buffer:	Rabbit IgG in phosphate buffered saline , pH 7.4, 150 mM NaCl, 0.02 % sodium azide and 50 % glycerol.
Preservative:	Sodium azide
Precaution of Use:	This product contains Sodium azide: a POISONOUS AND HAZARDOUS SUBSTANCE which should be handled by trained staff only.
Storage:	-20 °C
Storage Comment:	Store at -20 °C. Stable for 12 months from date of receipt.
Expiry Date:	12 months



Immunofluorescence (fixed cells)

Image 1. ABIN6275134 staining LOVO by IF/ICC. The sample were fixed with PFA and permeabilized in 0.1% Triton X-100, then blocked in 10% serum for 45 minutes at 25°C. The primary antibody was diluted at 1/200 and incubated with the sample for 1 hour at 37°C. An Alexa Fluor 594 conjugated goat anti-rabbit IgG (H+L) Ab, diluted at 1/600, was used as the secondary antibody