

Datasheet for ABIN6257798 anti-SURF1 antibody (Internal Region)

[Go to Product page](#)

3 Images

Overview

Quantity:	100 µL
Target:	SURF1
Binding Specificity:	Internal Region
Reactivity:	Human, Rat, Mouse
Host:	Rabbit
Clonality:	Polyclonal
Conjugate:	This SURF1 antibody is un-conjugated
Application:	Western Blotting (WB), ELISA, Immunofluorescence (IF), Immunocytochemistry (ICC)

Product Details

Immunogen:	A synthesized peptide derived from human SURF1, corresponding to a region within the internal amino acids.
Isotype:	IgG
Specificity:	SURF1 Antibody detects endogenous levels of total SURF1.
Predicted Reactivity:	Pig,Dog,Xenopus
Purification:	The antiserum was purified by peptide affinity chromatography using SulfoLink™ Coupling Resin (Thermo Fisher Scientific).

Target Details

Target:	SURF1
---------	-------

Target Details

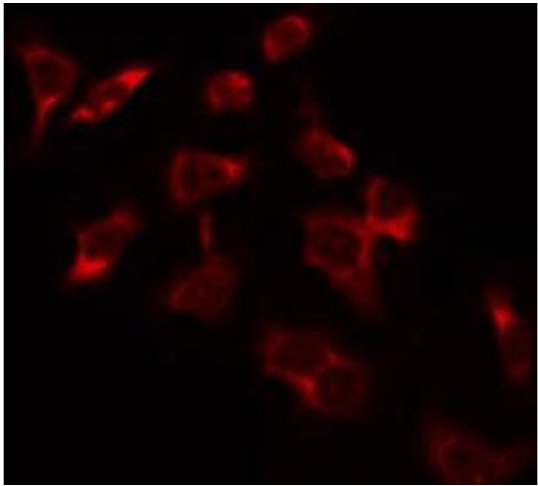
Alternative Name:	SURF1 (SURF1 Products)
Background:	Description: Component of the MITRAC (mitochondrial translation regulation assembly intermediate of cytochrome c oxidase complex) complex, that regulates cytochrome c oxidase assembly. Gene: SURF1
Molecular Weight:	30 kDa
Gene ID:	6834
UniProt:	Q15526
Pathways:	Proton Transport , Ribonucleoside Biosynthetic Process

Application Details

Application Notes:	WB 1:500-1:1000, IF/ICC 1:100-1:500, ELISA(peptide) 1:20000-1:40000
Restrictions:	For Research Use only

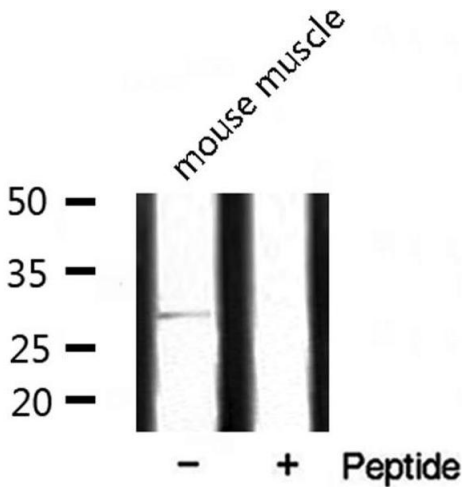
Handling

Format:	Liquid
Concentration:	1 mg/mL
Buffer:	Rabbit IgG in phosphate buffered saline , pH 7.4, 150 mM NaCl, 0.02 % sodium azide and 50 % glycerol.
Preservative:	Sodium azide
Precaution of Use:	This product contains Sodium azide: a POISONOUS AND HAZARDOUS SUBSTANCE which should be handled by trained staff only.
Storage:	-20 °C
Storage Comment:	Store at -20 °C. Stable for 12 months from date of receipt.
Expiry Date:	12 months



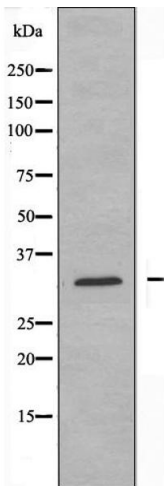
Immunofluorescence (fixed cells)

Image 1. ABIN6274366 staining Hela by IF/ICC. The sample were fixed with PFA and permeabilized in 0.1% Triton X-100, then blocked in 10% serum for 45 minutes at 25°C. The primary antibody was diluted at 1/200 and incubated with the sample for 1 hour at 37°C. An Alexa Fluor 594 conjugated goat anti-rabbit IgG (H+L) Ab, diluted at 1/600, was used as the secondary antibody.



Western Blotting

Image 2. Western blot analysis of extracts from mouse muscle, using SURF1 antibody.



Western Blotting

Image 3. Western blot analysis of extracts from Jurkat cells, using SURF1 antibody.