

Datasheet for ABIN6257800  
**anti-NPBWR2 antibody**

## 4 Images

[Go to Product page](#)

## Overview

Quantity:	100 µL
Target:	NPBWR2
Reactivity:	Human, Mouse
Host:	Rabbit
Clonality:	Polyclonal
Conjugate:	This NPBWR2 antibody is un-conjugated
Application:	ELISA, Western Blotting (WB), Immunohistochemistry (IHC)

## Product Details

Immunogen:	A synthesized peptide
Isotype:	IgG
Specificity:	GPR8 antibody detects endogenous levels of total GPR8
Cross-Reactivity:	Human, Mouse (Murine)
Purification:	The antiserum was purified by peptide affinity chromatography using SulfoLink™ Coupling Resin (Thermo Fisher Scientific).

## Target Details

Target:	NPBWR2
Alternative Name:	GPR8 ( <a href="#">NPBWR2 Products</a> )
Background:	Description: Interacts specifically with a number of opioid ligands. Receptor for neuropeptides B

Target Details

	and W, which may be involved in neuroendocrine system regulation, food intake and the organization of other signals. Gene: NPBWR2
Molecular Weight:	37 kDa
Gene ID:	2832
UniProt:	<a href="#">P48146</a>

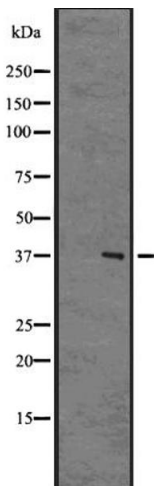
Application Details

Application Notes:	WB 1:500-1:2000 IHC 1:50-1:200
Restrictions:	For Research Use only

Handling

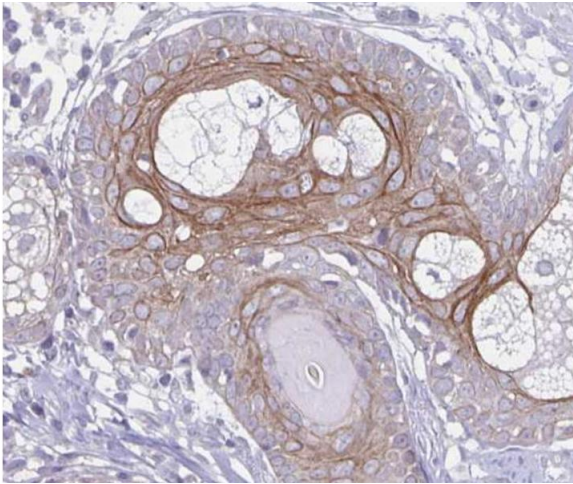
Format:	Liquid
Concentration:	1 mg/mL
Buffer:	Rabbit IgG in phosphate buffered saline, pH 7.4, 150 mM NaCl, 0.02 % sodium azide and 50 % glycerol.
Preservative:	Sodium azide
Precaution of Use:	This product contains Sodium azide: a POISONOUS AND HAZARDOUS SUBSTANCE which should be handled by trained staff only.

Images



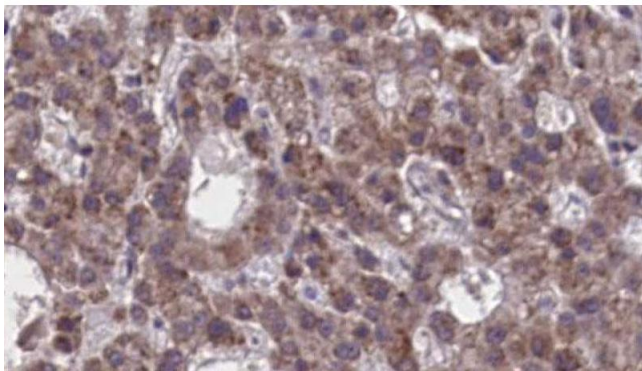
**Western Blotting**

**Image 1.** Western blot analysis of GPR8 Antibody expression in Human brain tissue lysates. The lane on the left is treated with the antigen-specific peptide.



#### Immunohistochemistry

**Image 2.** ABIN6273894 at 1/100 staining human prostate cancer tissues sections by IHC-P. The tissue was formaldehyde fixed and a heat mediated antigen retrieval step in citrate buffer was performed. The tissue was then blocked and incubated with the antibody for 1.5 hou



#### Immunohistochemistry

**Image 3.** ABIN6273894 at 1/100 staining Human liver cancer tissue by IHC-P. The sample was formaldehyde fixed and a heat mediated antigen retrieval step in citrate buffer was performed. The sample was then blocked and incubated with the antibody for 1.5 hours at 22°C. An HRP conjugated goat anti-rabbit antibody was used as the secondary.

Please check the [product details page](#) for more images. Overall 4 images are available for ABIN6257800.