

Datasheet for ABIN6257825  
**anti-MCM9 antibody (C-Term)**



[Go to Product page](#)

2 Images

## Overview

Quantity:	100 µL
Target:	MCM9
Binding Specificity:	C-Term
Reactivity:	Human, Rat
Host:	Rabbit
Clonality:	Polyclonal
Conjugate:	This MCM9 antibody is un-conjugated
Application:	ELISA, Western Blotting (WB), Immunohistochemistry (IHC)

## Product Details

Immunogen:	A synthesized peptide derived from human MCM9, corresponding to a region within C-terminal amino acids.
Isotype:	IgG
Specificity:	MCM9 Antibody detects endogenous levels of total MCM9.
Purification:	The antiserum was purified by peptide affinity chromatography using SulfoLink™ Coupling Resin (Thermo Fisher Scientific).

## Target Details

Target:	MCM9
Alternative Name:	MCM9 ( <a href="#">MCM9 Products</a> )

## Target Details

---

**Background:** Description: Component of the MCM8-MCM9 complex, a complex involved in homologous recombination repair following DNA interstrand cross-links and plays a key role during gametogenesis. The MCM8-MCM9 complex probably acts as a hexameric helicase downstream of the Fanconi anemia proteins BRCA2 and RAD51 and is required to process aberrant forks into homologous recombination substrates and to orchestrate homologous recombination with resection, fork stabilization and fork restart.  
Gene: MCM9

---

**Molecular Weight:** ?Isoform 1, 127 , Isoform 2, 44 kDa

---

**Gene ID:** 254394

---

**UniProt:** [Q9NXL9](#)

---

## Application Details

---

**Application Notes:** WB 1:500-1:2000, IHC 1:50-1:200, ELISA(peptide) 1:20000-1:40000

---

**Restrictions:** For Research Use only

---

## Handling

---

**Format:** Liquid

---

**Concentration:** 1 mg/mL

---

**Buffer:** Rabbit IgG in phosphate buffered saline, pH 7.4, 150 mM NaCl, 0.02 % sodium azide and 50 % glycerol.

---

**Preservative:** Sodium azide

---

**Precaution of Use:** This product contains Sodium azide: a POISONOUS AND HAZARDOUS SUBSTANCE which should be handled by trained staff only.

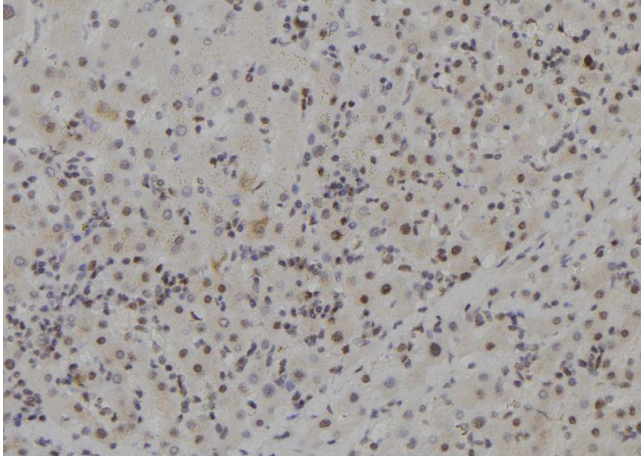
---

**Storage:** -20 °C

---

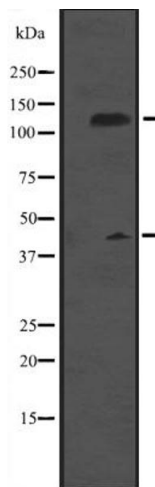
**Expiry Date:** 12 months

---



### Immunohistochemistry

**Image 1.** ABIN6273704 at 1/100 staining Human liver tissue by IHC-P. The sample was formaldehyde fixed and a heat mediated antigen retrieval step in citrate buffer was performed. The sample was then blocked and incubated with the antibody for 1.5 hours at 22°C. An HRP conjugated goat anti-rabbit antibody was used as the secondary.



### Western Blotting

**Image 2.** Western blot analysis of MCM9 expression in Rat brain tissue lysate, The lane on the left is treated with the antigen-specific peptide.