

Datasheet for ABIN6257835
anti-MED26 antibody (N-Term)[Go to Product page](#)

3 Images

Overview

Quantity:	100 µL
Target:	MED26
Binding Specificity:	N-Term
Reactivity:	Human, Mouse
Host:	Rabbit
Clonality:	Polyclonal
Conjugate:	This MED26 antibody is un-conjugated
Application:	Western Blotting (WB), ELISA, Immunocytochemistry (ICC), Immunofluorescence (IF)

Product Details

Immunogen:	A synthesized peptide derived from human MED26, corresponding to a region within N-terminal amino acids.
Isotype:	IgG
Specificity:	MED26 Antibody detects endogenous levels of total MED26.
Predicted Reactivity:	Pig,Zebrafish,Bovine,Rabbit,Dog
Purification:	The antiserum was purified by peptide affinity chromatography using SulfoLink™ Coupling Resin (Thermo Fisher Scientific).

Target Details

Target:	MED26
---------	-------

Target Details

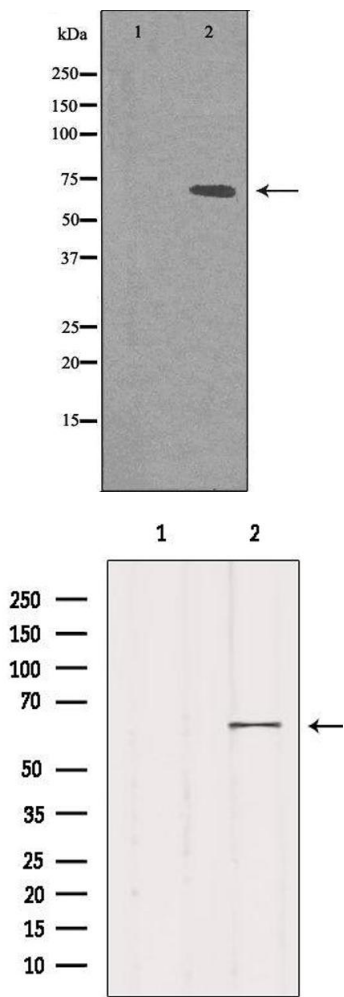
Alternative Name:	MED26 (MED26 Products)
Background:	<p>Description: Component of the Mediator complex, a coactivator involved in the regulated transcription of nearly all RNA polymerase II-dependent genes. Mediator functions as a bridge to convey information from gene-specific regulatory proteins to the basal RNA polymerase II transcription machinery. Mediator is recruited to promoters by direct interactions with regulatory proteins and serves as a scaffold for the assembly of a functional pre-initiation complex with RNA polymerase II and the general transcription factors.</p> <p>Gene: MED26</p>
Molecular Weight:	65 kDa
Gene ID:	9441
UniProt:	O95402
Pathways:	Regulation of Lipid Metabolism by PPARalpha

Application Details

Application Notes:	WB 1:500-1:1000, IF/ICC 1:100-1:500, ELISA(peptide) 1:20000-1:40000
Restrictions:	For Research Use only

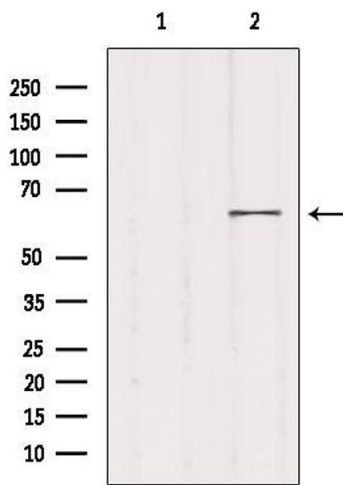
Handling

Format:	Liquid
Concentration:	1 mg/mL
Buffer:	Rabbit IgG in phosphate buffered saline , pH 7.4, 150 mM NaCl, 0.02 % sodium azide and 50 % glycerol.
Preservative:	Sodium azide
Precaution of Use:	This product contains Sodium azide: a POISONOUS AND HAZARDOUS SUBSTANCE which should be handled by trained staff only.
Storage:	-20 °C
Storage Comment:	Store at -20 °C. Stable for 12 months from date of receipt.
Expiry Date:	12 months



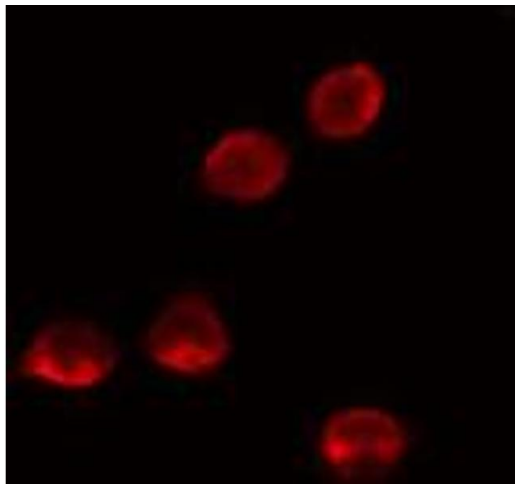
Western Blotting

Image 1. Western blot analysis of extracts from LOVO cells, using MED26 antibody.



Western Blotting

Image 2. Western blot analysis of extracts from 293, using MED26 Antibody. Lane 1 was treated with the blocking peptide.



Immunofluorescence (fixed cells)

Image 3. ABIN6274136 staining LOVO cells by IF/ICC. The sample were fixed with PFA and permeabilized in 0.1% Triton X-100, then blocked in 10% serum for 45 minutes at 25°C. The primary antibody was diluted at 1/200 and incubated with the sample for 1 hour at 37°C. An Alexa Fluor 594 conjugated goat anti-rabbit IgG (H+L) antibody (Cat.# S0006), diluted at 1/600, was used as secondary antibody.