

Datasheet for ABIN6257900
anti-ARHGAP18 antibody (Internal Region)[Go to Product page](#)

3 Images

Overview

Quantity:	100 µL
Target:	ARHGAP18
Binding Specificity:	Internal Region
Reactivity:	Human, Rat
Host:	Rabbit
Clonality:	Polyclonal
Conjugate:	This ARHGAP18 antibody is un-conjugated
Application:	Western Blotting (WB), ELISA, Immunohistochemistry (IHC), Immunofluorescence (IF), Immunocytochemistry (ICC)

Product Details

Immunogen:	A synthesized peptide derived from human RHG18, corresponding to a region within the internal amino acids.
Isotype:	IgG
Specificity:	RHG18 Antibody detects endogenous levels of total RHG18.
Predicted Reactivity:	Horse, Sheep, Rabbit, Dog, Chicken
Purification:	The antiserum was purified by peptide affinity chromatography using SulfoLink™ Coupling Resin (Thermo Fisher Scientific).

Target Details

Target:	ARHGAP18
---------	----------

Target Details

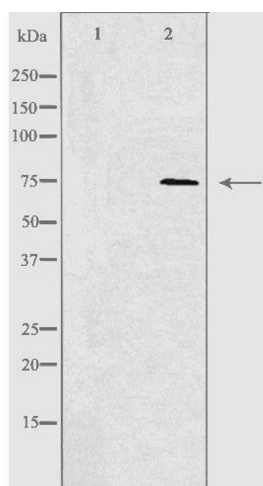
Alternative Name:	ARHGAP18 (ARHGAP18 Products)
Background:	<p>Description: Rho GTPase activating protein that suppresses F-actin polymerization by inhibiting Rho. Rho GTPase activating proteins act by converting Rho-type GTPases to an inactive GDP-bound state (PubMed:21865595). Plays a key role in tissue tension and 3D tissue shape by regulating cortical actomyosin network formation. Acts downstream of YAP1 and inhibits actin polymerization, which in turn reduces nuclear localization of YAP1 (PubMed:25778702). Regulates cell shape, spreading, and migration (PubMed:21865595).</p> <p>Gene: ARHGAP18</p>
Molecular Weight:	75 kDa
Gene ID:	93663
UniProt:	Q8N392

Application Details

Application Notes:	WB 1:500-1:1000, IHC: 1:50-1:200, IF/ICC 1:100-1:500, ELISA(peptide) 1:20000-1:40000
Restrictions:	For Research Use only

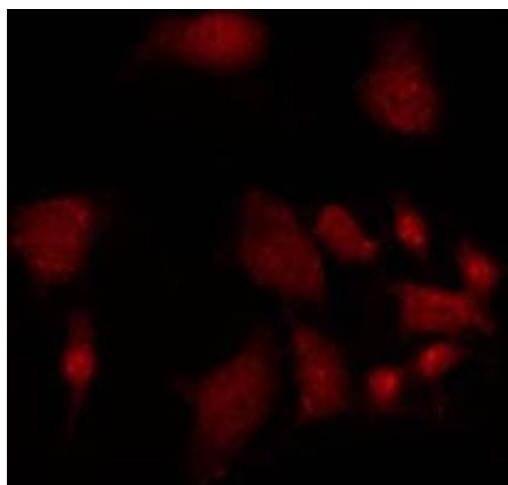
Handling

Format:	Liquid
Concentration:	1 mg/mL
Buffer:	Rabbit IgG in phosphate buffered saline , pH 7.4, 150 mM NaCl, 0.02 % sodium azide and 50 % glycerol.
Preservative:	Sodium azide
Precaution of Use:	This product contains Sodium azide: a POISONOUS AND HAZARDOUS SUBSTANCE which should be handled by trained staff only.
Storage:	-20 °C
Storage Comment:	Store at -20 °C. Stable for 12 months from date of receipt.
Expiry Date:	12 months



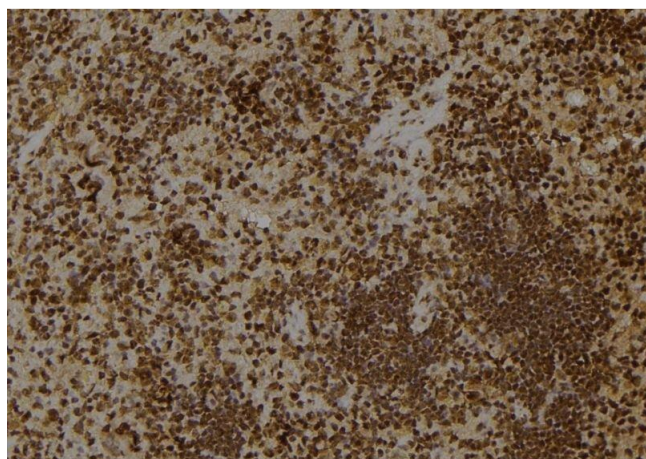
Western Blotting

Image 1. Western blot analysis of extracts from 293 cells using RHG18 antibody. The lane on the left is treated with the antigen-specific peptide.



Immunofluorescence (fixed cells)

Image 2. ABIN6275491 staining 293 by IF/ICC. The sample were fixed with PFA and permeabilized in 0.1% Triton X-100, then blocked in 10% serum for 45 minutes at 25°C. The primary antibody was diluted at 1/200 and incubated with the sample for 1 hour at 37°C. An Alexa Fluor 594 conjugated goat anti-rabbit IgG (H+L) Ab, diluted at 1/600, was used as the secondary antibody.



Immunohistochemistry

Image 3. ABIN6275491 at 1/100 staining Rat spleen tissue by IHC-P. The sample was formaldehyde fixed and a heat mediated antigen retrieval step in citrate buffer was performed. The sample was then blocked and incubated with the antibody for 1.5 hours at 22°C. An HRP conjugated goat anti-rabbit antibody was used as the secondary.