

Datasheet for ABIN6257929

**anti-ARFGAP1 antibody (Internal Region)**[Go to Product page](#)**2** Images

## Overview

Quantity:	100 µL
Target:	ARFGAP1
Binding Specificity:	Internal Region
Reactivity:	Human, Mouse, Rat
Host:	Rabbit
Clonality:	Polyclonal
Conjugate:	This ARFGAP1 antibody is un-conjugated
Application:	Western Blotting (WB), ELISA, Immunofluorescence (IF), Immunocytochemistry (ICC)

## Product Details

Immunogen:	A synthesized peptide derived from human ARFGAP1, corresponding to a region within the internal amino acids.
Isotype:	IgG
Specificity:	ARFGAP1 Antibody detects endogenous levels of total ARFGAP1.
Predicted Reactivity:	Rabbit
Purification:	The antiserum was purified by peptide affinity chromatography using SulfoLink™ Coupling Resin (Thermo Fisher Scientific).

## Target Details

Target:	ARFGAP1
---------	---------

## Target Details

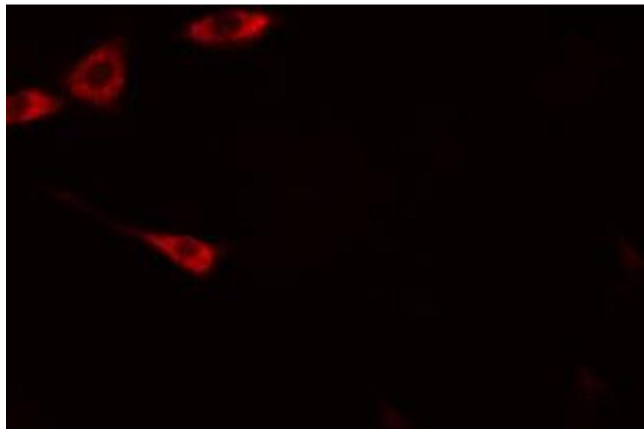
Alternative Name:	ARFGAP1 ( <a href="#">ARFGAP1 Products</a> )
Background:	<p>Description: GTPase-activating protein (GAP) for the ADP ribosylation factor 1 (ARF1). Involved in membrane trafficking and /or vesicle transport. Promotes hydrolysis of the ARF1-bound GTP and thus, is required for the dissociation of coat proteins from Golgi-derived membranes and vesicles, a prerequisite for vesicle's fusion with target compartment. Probably regulates ARF1-mediated transport via its interaction with the KDELR proteins and TMED2. Overexpression induces the redistribution of the entire Golgi complex to the endoplasmic reticulum, as when ARF1 is deactivated. Its activity is stimulated by phosphoinositides and inhibited by phosphatidylcholine (By similarity).</p> <p>Gene: ARFGAP1</p>
Molecular Weight:	60/48 kDa
Gene ID:	55738
UniProt:	<a href="#">Q8N6T3</a>
Pathways:	<a href="#">p53 Signaling</a> , <a href="#">ER-Nucleus Signaling</a> , <a href="#">Unfolded Protein Response</a>

## Application Details

Application Notes:	WB 1:500-1:1000, IF/ICC 1:100-1:500, ELISA(peptide) 1:20000-1:40000
Restrictions:	For Research Use only

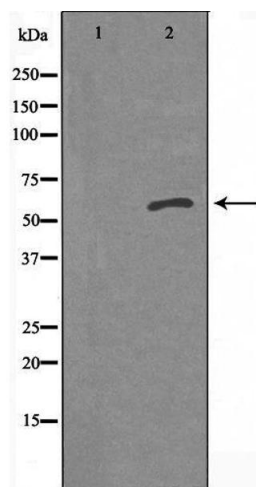
## Handling

Format:	Liquid
Concentration:	1 mg/mL
Buffer:	Rabbit IgG in phosphate buffered saline , pH 7.4, 150 mM NaCl, 0.02 % sodium azide and 50 % glycerol.
Preservative:	Sodium azide
Precaution of Use:	This product contains Sodium azide: a POISONOUS AND HAZARDOUS SUBSTANCE which should be handled by trained staff only.
Storage:	-20 °C
Storage Comment:	Store at -20 °C. Stable for 12 months from date of receipt.
Expiry Date:	12 months



#### Immunofluorescence (fixed cells)

**Image 1.** ABIN6274818 staining HeLa cells by IF/ICC. The sample were fixed with PFA and permeabilized in 0.1% Triton X-100, then blocked in 10% serum for 45 minutes at 25°C. The primary antibody was diluted at 1/200 and incubated with the sample for 1 hour at 37°C. An Alexa Fluor 594 conjugated goat anti-rabbit IgG (H+L) antibody (Cat.# S0006), diluted at 1/600, was used as secondary antibody.



#### Western Blotting

**Image 2.** Western blot analysis of extracts from HeLa cells using ARFGAP1 antibody. The lane on the left is treated with the antigen-specific peptide.