

Datasheet for ABIN6257940
anti-ATF6B antibody (Internal Region)

3 Images

[Go to Product page](#)

Overview

Quantity:	100 µL
Target:	ATF6B
Binding Specificity:	Internal Region
Reactivity:	Human, Mouse, Rat
Host:	Rabbit
Clonality:	Polyclonal
Conjugate:	This ATF6B antibody is un-conjugated
Application:	Western Blotting (WB), ELISA, Immunohistochemistry (IHC), Immunofluorescence (IF), Immunocytochemistry (ICC)

Product Details

Immunogen:	A synthesized peptide derived from human ATF6B, corresponding to a region within the internal amino acids.
Isotype:	IgG
Specificity:	ATF6B Antibody detects endogenous levels of total ATF6B.
Purification:	The antiserum was purified by peptide affinity chromatography using SulfoLink™ Coupling Resin (Thermo Fisher Scientific).

Target Details

Target:	ATF6B
Alternative Name:	ATF6B (ATF6B Products)

Target Details

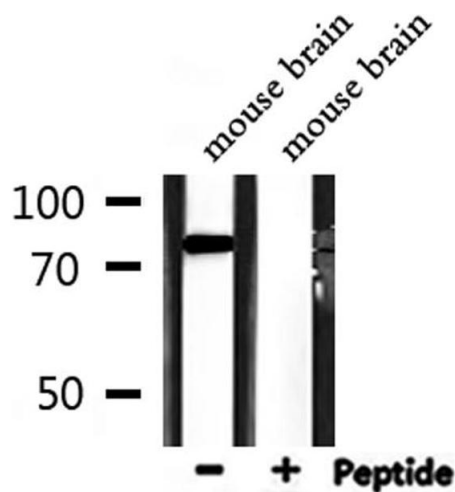
Background:	Description: Transcriptional factor that acts in the unfolded protein response (UPR) pathway by activating UPR target genes induced during ER stress. Binds DNA on the 5'-CCAC[GA]-3' half of the ER stress response element (ERSE) (5'-CCAATN9CCAC[GA]-3') when NF-Y is bound to ERSE. Gene: ATF6B
Molecular Weight:	76 kDa
Gene ID:	1388
UniProt:	Q99941
Pathways:	Thyroid Hormone Synthesis , Myometrial Relaxation and Contraction

Application Details

Application Notes:	WB 1:500-1:1000, IF/ICC 1:100-1:500, IHC 1:50-1:200, ELISA(peptide) 1:20000-1:40000
Restrictions:	For Research Use only

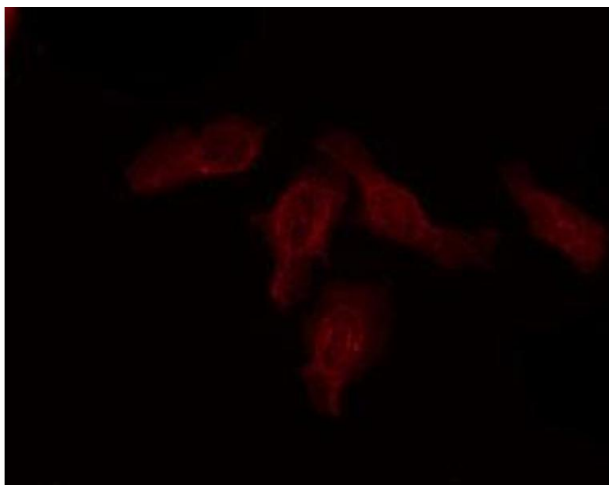
Handling

Format:	Liquid
Concentration:	1 mg/mL
Buffer:	Rabbit IgG in phosphate buffered saline , pH 7.4, 150 mM NaCl, 0.02 % sodium azide and 50 % glycerol.
Preservative:	Sodium azide
Precaution of Use:	This product contains Sodium azide: a POISONOUS AND HAZARDOUS SUBSTANCE which should be handled by trained staff only.
Storage:	-20 °C
Storage Comment:	Store at -20 °C. Stable for 12 months from date of receipt.
Expiry Date:	12 months



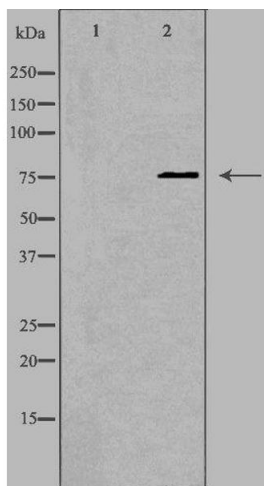
Western Blotting

Image 1. Western blot analysis of extracts from mouse brain, using ATF6B Antibody.



Immunofluorescence (fixed cells)

Image 2. ABIN6274488 staining COLO205 by IF/ICC. The sample were fixed with PFA and permeabilized in 0.1% Triton X-100, then blocked in 10% serum for 45 minutes at 25°C. The primary antibody was diluted at 1/200 and incubated with the sample for 1 hour at 37°C. An Alexa Fluor 594 conjugated goat anti-rabbit IgG (H+L) Ab, diluted at 1/600, was used as the secondary antibody.



Western Blotting

Image 3. Western blot analysis of extracts from COLO205 cells, using ATF6B antibody. The lane on the left is treated with the antigen-specific peptide.