



[Go to Product page](#)

Datasheet for ABIN6257944

anti-ARFIP1 antibody (Internal Region)

3 Images

Overview

Quantity:	100 µL
Target:	ARFIP1
Binding Specificity:	Internal Region
Reactivity:	Human, Rat, Mouse
Host:	Rabbit
Clonality:	Polyclonal
Conjugate:	This ARFIP1 antibody is un-conjugated
Application:	Western Blotting (WB), ELISA, Immunohistochemistry (IHC), Immunofluorescence (IF), Immunocytochemistry (ICC)

Product Details

Immunogen:	A synthesized peptide derived from human ARFIP1, corresponding to a region within the internal amino acids.
Isotype:	IgG
Specificity:	ARFIP1 Antibody detects endogenous levels of total ARFIP1.
Predicted Reactivity:	Pig,Zebrafish,Bovine,Horse,Sheep,Rabbit,Dog,Xenopus
Purification:	The antiserum was purified by peptide affinity chromatography using SulfoLink™ Coupling Resin (Thermo Fisher Scientific).

Target Details

Target:	ARFIP1
---------	--------

Target Details

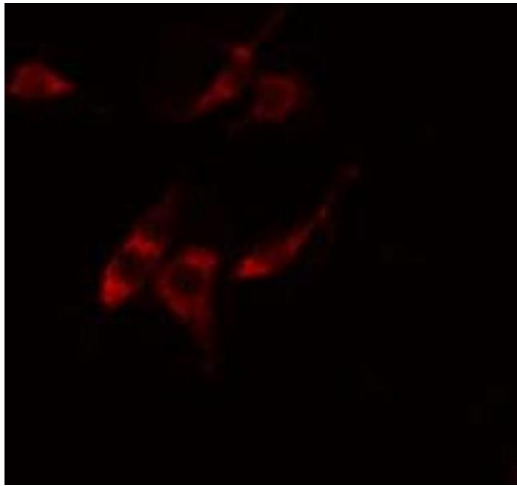
Alternative Name:	ARFIP1 (ARFIP1 Products)
Background:	Description: Putative target protein of ADP-ribosylation factor. Gene: ARFIP1
Molecular Weight:	40 kDa
Gene ID:	27236
UniProt:	P53367

Application Details

Application Notes:	WB 1:500-1:1000, IF/ICC 1:100-1:500, IHC 1:50-1:200, ELISA(peptide) 1:20000-1:40000
Restrictions:	For Research Use only

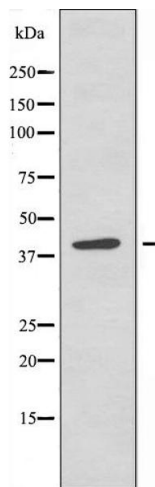
Handling

Format:	Liquid
Concentration:	1 mg/mL
Buffer:	Rabbit IgG in phosphate buffered saline , pH 7.4, 150 mM NaCl, 0.02 % sodium azide and 50 % glycerol.
Preservative:	Sodium azide
Precaution of Use:	This product contains Sodium azide: a POISONOUS AND HAZARDOUS SUBSTANCE which should be handled by trained staff only.
Storage:	-20 °C
Storage Comment:	Store at -20 °C. Stable for 12 months from date of receipt.
Expiry Date:	12 months



Immunofluorescence (fixed cells)

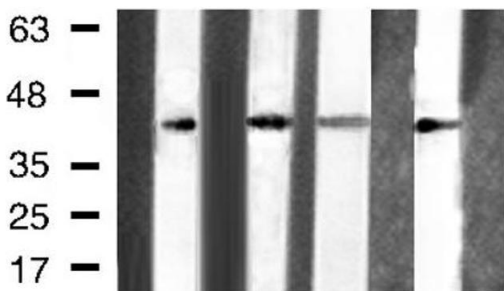
Image 1. ABIN6274861 staining Hela cells by IF/ICC. The sample were fixed with PFA and permeabilized in 0.1% Triton X-100, then blocked in 10% serum for 45 minutes at 25°C. The primary antibody was diluted at 1/200 and incubated with the sample for 1 hour at 37°C. An Alexa Fluor 594 conjugated goat anti-rabbit IgG (H+L) antibody (Cat.# S0006), diluted at 1/600, was used as secondary antibody.



Western Blotting

Image 2. Western blot analysis of extracts from Jurkat cells, using ARFIP1 antibody.

rat heart
rat brain
mouse lung
mouse brain



Western Blotting

Image 3. Western blot analysis of ARFIP1 expression in various lysates