

Datasheet for ABIN6257995

anti-SIRPB1 antibody

3 Images

[Go to Product page](#)

Overview

Quantity:	100 µL
Target:	SIRPB1
Reactivity:	Human, Rat
Host:	Rabbit
Clonality:	Polyclonal
Conjugate:	This SIRPB1 antibody is un-conjugated
Application:	Western Blotting (WB), ELISA, Immunocytochemistry (ICC), Immunofluorescence (IF)

Product Details

Immunogen:	A synthesized peptide
Isotype:	IgG
Specificity:	SIRPB1 Antibody detects endogenous levels of total SIRPB1
Cross-Reactivity:	Human, Rat (Rattus)
Purification:	The antiserum was purified by peptide affinity chromatography using SulfoLink™ Coupling Resin (Thermo Fisher Scientific).

Target Details

Target:	SIRPB1
Alternative Name:	SIRPB1 (SIRPB1 Products)
Background:	Description: Immunoglobulin-like cell surface receptor involved in the negative regulation of

Target Details

receptor tyrosine kinase-coupled signaling processes. Participates also in the recruitment of tyrosine kinase SYK.

Gene: SIRPB1

Molecular Weight: 48 kDa

Gene ID: 10326

UniProt: [O00241](#)

Application Details

Application Notes: WB 1:500~1:1000, IF/ICC 1:100-1:500

Restrictions: For Research Use only

Handling

Format: Liquid

Concentration: 1 mg/mL

Buffer: Rabbit IgG in phosphate buffered saline , pH 7.4, 150 mM NaCl, 0.02 % sodium azide and 50 % glycerol.

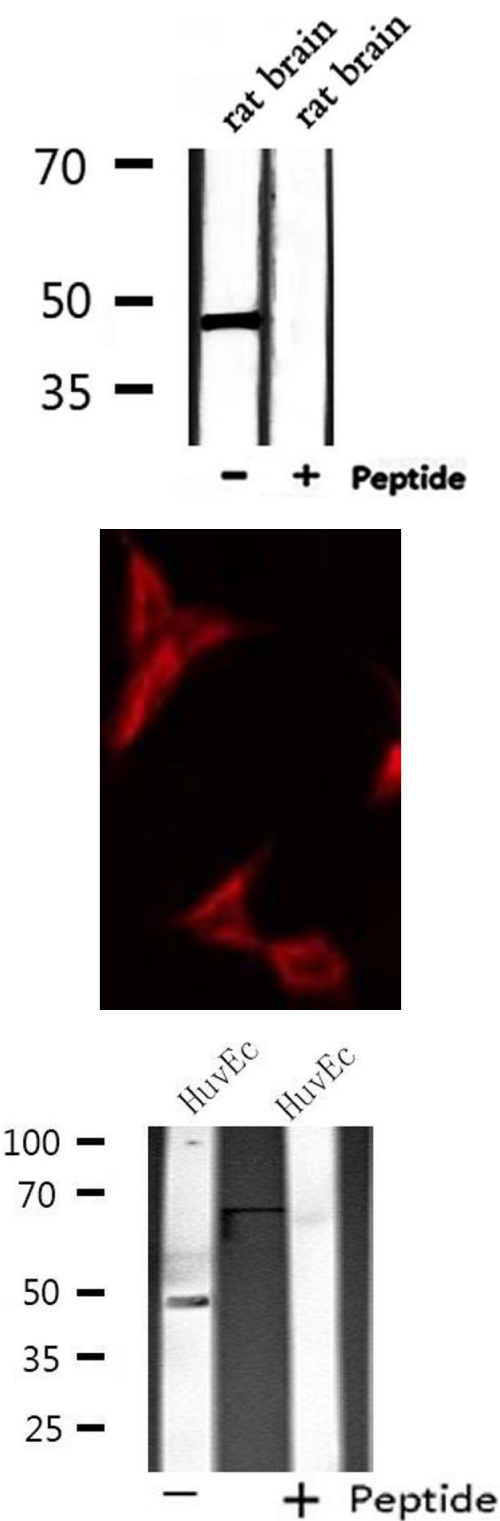
Preservative: Sodium azide

Precaution of Use: This product contains Sodium azide: a POISONOUS AND HAZARDOUS SUBSTANCE which should be handled by trained staff only.

Storage: -20 °C

Storage Comment: Store at -20 °C.Stable for 12 months from date of receipt

Expiry Date: 12 months



Western Blotting

Image 1. Western blot analysis of extracts from rat brain, using SIRPB1 Antibody.

Immunofluorescence (fixed cells)

Image 2. ABIN6275571 staining HeLa by IF/ICC. The sample were fixed with PFA and permeabilized in 0.1% Triton X-100, then blocked in 10% serum for 45 minutes at 25°C. The primary antibody was diluted at 1/200 and incubated with the sample for 1 hour at 37°C. An Alexa Fluor 594 conjugated goat anti-rabbit IgG (H+L) Ab, diluted at 1/600, was used as the secondary antibody.

Western Blotting

Image 3. Western blot analysis of extracts from HuvEc cells using SIRPB1 antibody.