

Datasheet for ABIN6258023

**anti-CITED4 antibody (Internal Region)**[Go to Product page](#)**1** Image

## Overview

|                      |  |
|----------------------|--|
| Quantity:            | 100 µL   |
| Target:              | CITED4   |
| Binding Specificity: | Internal Region  |
| Reactivity:          | Human, Mouse, Rat  |
| Host:                | Rabbit   |
| Clonality:           | Polyclonal   |
| Conjugate:           | This CITED4 antibody is un-conjugated                    |
| Application:         | Western Blotting (WB), ELISA, Immunohistochemistry (IHC) |

## Product Details

|                       |   |
|-----------------------|---|
| Immunogen:            | A synthesized peptide derived from human CITED4, corresponding to a region within the internal amino acids.               |
| Isotype:              | IgG   |
| Specificity:          | CITED4 Antibody detects endogenous levels of total CITED4.  |
| Predicted Reactivity: | Pig,Bovine,Rabbit   |
| Purification:         | The antiserum was purified by peptide affinity chromatography using SulfoLink™ Coupling Resin (Thermo Fisher Scientific). |

## Target Details

|         |        |
|---------|--------|
| Target: | CITED4 |
|---------|--------|

## Target Details

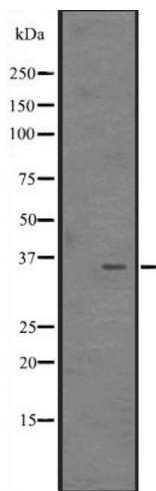
|                   |   |
|-------------------|---|
| Alternative Name: | CITED4 ( <a href="#">CITED4 Products</a> )  |
| Background:       | <p>Description: Acts as transcriptional coactivator for TFAP2/AP-2. Enhances estrogen-dependent transactivation mediated by estrogen receptors. May function as an inhibitor of transactivation by HIF1A by disrupting HIF1A interaction with CREBBP. May be involved in regulation of gene expression during development and differentiation of blood cells, endothelial cells and mammary epithelial cells.</p> <p>Gene: CITED4</p> |
| Molecular Weight: | 32 kDa  |
| Gene ID:          | 163732  |
| UniProt:          | <a href="#">Q96RK1</a>  |

## Application Details

|                    |   |
|--------------------|---|
| Application Notes: | WB 1:500-1:2000, IHC 1:50-1:200, ELISA(peptide) 1:20000-1:40000 |
| Restrictions:      | For Research Use only   |

## Handling

|                    |  |
|--------------------|--|
| Format:            | Liquid   |
| Concentration:     | 1 mg/mL  |
| Buffer:            | Rabbit IgG in phosphate buffered saline, pH 7.4, 150 mM NaCl, 0.02 % sodium azide and 50 % glycerol.                   |
| Preservative:      | Sodium azide   |
| Precaution of Use: | This product contains Sodium azide: a POISONOUS AND HAZARDOUS SUBSTANCE which should be handled by trained staff only. |
| Storage:           | -20 °C   |
| Expiry Date:       | 12 months  |



Western Blotting

**Image 1.** Western blot analysis of CITED4 expression in MCF7 Cell Lysate ,The lane on the left is treated with the antigen-specific peptide.