

Datasheet for ABIN6258024  
**anti-CLCC1 antibody (Internal Region)**[Go to Product page](#)

## 3 Images

## Overview

Quantity:	100 µL
Target:	CLCC1
Binding Specificity:	Internal Region
Reactivity:	Human, Rat
Host:	Rabbit
Clonality:	Polyclonal
Conjugate:	This CLCC1 antibody is un-conjugated
Application:	Western Blotting (WB), ELISA, Immunofluorescence (IF), Immunocytochemistry (ICC)

## Product Details

Immunogen:	A synthesized peptide derived from human CLCC1, corresponding to a region within the internal amino acids.
Isotype:	IgG
Specificity:	CLCC1 Antibody detects endogenous levels of total CLCC1.
Predicted Reactivity:	Bovine,Horse,Sheep
Purification:	The antiserum was purified by peptide affinity chromatography using SulfoLink™ Coupling Resin (Thermo Fisher Scientific).

## Target Details

Target:	CLCC1
---------	-------

## Target Details

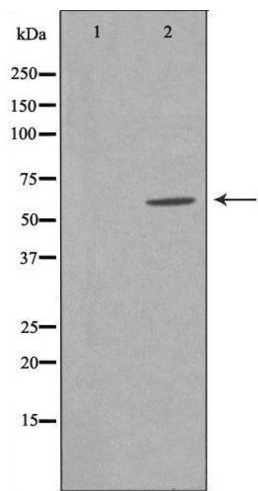
Alternative Name:	CLCC1 ( <a href="#">CLCC1 Products</a> )
Background:	Description: Seems to act as a chloride ion channel. Gene: CLCC1
Molecular Weight:	62 kDa
Gene ID:	23155
UniProt:	<a href="#">Q96S66</a>
Pathways:	<a href="#">SARS-CoV-2 Protein Interactome</a> , <a href="#">The Global Phosphorylation Landscape of SARS-CoV-2 Infection</a>

## Application Details

Application Notes:	WB 1:500-1:1000, IF/ICC 1:100-1:500, ELISA(peptide) 1:20000-1:40000
Restrictions:	For Research Use only

## Handling

Format:	Liquid
Concentration:	1 mg/mL
Buffer:	Rabbit IgG in phosphate buffered saline , pH 7.4, 150 mM NaCl, 0.02 % sodium azide and 50 % glycerol.
Preservative:	Sodium azide
Precaution of Use:	This product contains Sodium azide: a POISONOUS AND HAZARDOUS SUBSTANCE which should be handled by trained staff only.
Storage:	-20 °C
Storage Comment:	Store at -20 °C. Stable for 12 months from date of receipt.
Expiry Date:	12 months



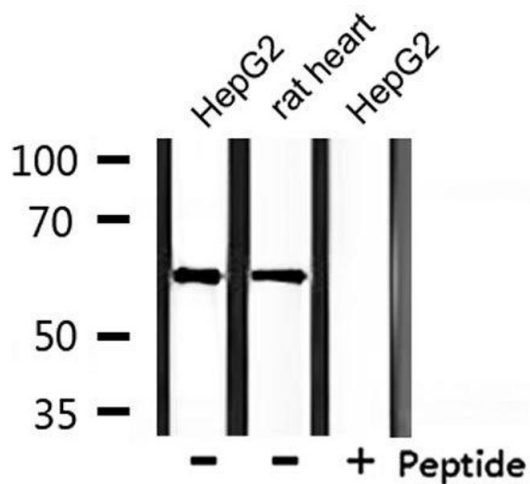
Western Blotting

**Image 1.** Western blot analysis of extracts from COLO cells using CLCC1 antibody. The lane on the left is treated with the antigen-specific peptide.



Immunofluorescence (fixed cells)

**Image 2.** ABIN6275001 staining COLO205 by IF/ICC. The sample were fixed with PFA and permeabilized in 0.1% Triton X-100, then blocked in 10% serum for 45 minutes at 25°C. The primary antibody was diluted at 1/200 and incubated with the sample for 1 hour at 37°C. An Alexa Fluor 594 conjugated goat anti-rabbit IgG (H+L) Ab, diluted at 1/600, was used as the secondary antibody.



Western Blotting

**Image 3.** Western blot analysis of extracts from HepG2 and rat heart, using CLCC1 Antibody.