



[Go to Product page](#)

Datasheet for ABIN6258041
anti-CYLC2 antibody (C-Term)

2 Images

Overview

| | |
|----------------------|--|
| Quantity: | 100 µL |
| Target: | CYLC2 |
| Binding Specificity: | C-Term |
| Reactivity: | Human, Rat, Mouse |
| Host: | Rabbit |
| Clonality: | Polyclonal |
| Conjugate: | This CYLC2 antibody is un-conjugated |
| Application: | ELISA, Western Blotting (WB), Immunohistochemistry (IHC) |

Product Details

| | |
|---------------|---|
| Immunogen: | A synthesized peptide derived from human CYLC2, corresponding to a region within C-terminal amino acids. |
| Isotype: | IgG |
| Specificity: | CYLC2 Antibody detects endogenous levels of total CYLC2. |
| Purification: | The antiserum was purified by peptide affinity chromatography using SulfoLink™ Coupling Resin (Thermo Fisher Scientific). |

Target Details

| | |
|-------------------|--|
| Target: | CYLC2 |
| Alternative Name: | CYLC2 (CYLC2 Products) |

Target Details

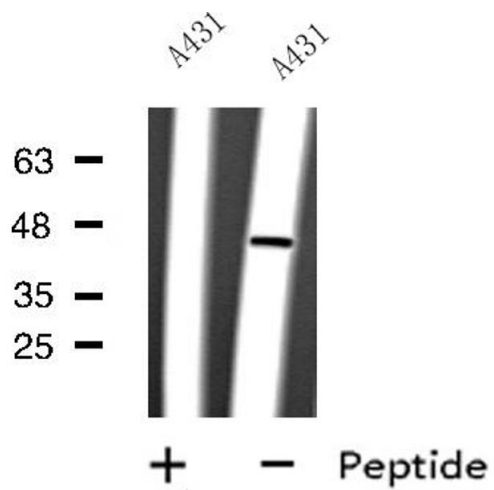
| | |
|-------------------|---|
| Background: | Description: Possible architectural role during spermatogenesis. May be involved in spermatid differentiation. Gene: CYLC2 |
| Molecular Weight: | 45 kDa |
| Gene ID: | 1539 |
| UniProt: | Q14093 |

Application Details

| | |
|--------------------|---|
| Application Notes: | WB 1:500-1:2000, IHC 1:50-1:200, ELISA(peptide) 1:20000-1:40000 |
| Restrictions: | For Research Use only |

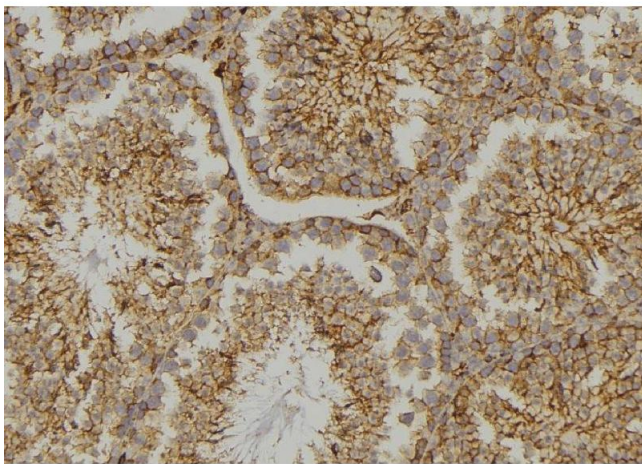
Handling

| | |
|--------------------|--|
| Format: | Liquid |
| Concentration: | 1 mg/mL |
| Buffer: | Rabbit IgG in phosphate buffered saline, pH 7.4, 150 mM NaCl, 0.02 % sodium azide and 50 % glycerol. |
| Preservative: | Sodium azide |
| Precaution of Use: | This product contains Sodium azide: a POISONOUS AND HAZARDOUS SUBSTANCE which should be handled by trained staff only. |
| Storage: | -20 °C |
| Expiry Date: | 12 months |



Western Blotting

Image 1. Western blot analysis of CYLC2 expression in A431 whole cell lysate. The lane on the left is treated with the antigen-specific peptide.



Immunohistochemistry

Image 2. ABIN6273478 at 1/100 staining testis tissue by IHC-P. The sample was formaldehyde fixed and a heat mediated antigen retrieval step in citrate buffer was performed. The sample was then blocked and incubated with the antibody for 1.5 hours at 22°C. An HRP conjugated goat anti-rabbit antibody was used as the secondary