

Datasheet for ABIN6258047

anti-CYP2D6 antibody

3 Images

[Go to Product page](#)

Overview

Quantity:	100 µL
Target:	CYP2D6
Reactivity:	Human, Mouse, Rat
Host:	Rabbit
Clonality:	Polyclonal
Conjugate:	This CYP2D6 antibody is un-conjugated
Application:	Western Blotting (WB), ELISA, Immunocytochemistry (ICC), Immunofluorescence (IF)

Product Details

Immunogen:	A synthesized peptide
Isotype:	IgG
Specificity:	Cytochrome P450 2D6 Antibody detects endogenous levels of total Cytochrome P450 2D6
Cross-Reactivity:	Human, Mouse (Murine), Rat (Rattus)
Purification:	The antiserum was purified by peptide affinity chromatography using SulfoLink™ Coupling Resin (Thermo Fisher Scientific).

Target Details

Target:	CYP2D6
Alternative Name:	Cytochrome P450 2D6 (CYP2D6 Products)
Background:	Description: Responsible for the metabolism of many drugs and environmental chemicals that

Target Details

it oxidizes. It is involved in the metabolism of drugs such as antiarrhythmics, adrenoceptor antagonists, and tricyclic antidepressants.

Gene: CYP2D6

Molecular Weight: 56 kDa

Gene ID: 1565

UniProt: [P10635](#)

Application Details

Application Notes: WB 1:500~1:1000, IF/ICC 1:100-1:500

Restrictions: For Research Use only

Handling

Format: Liquid

Concentration: 1 mg/mL

Buffer: Rabbit IgG in phosphate buffered saline , pH 7.4, 150 mM NaCl, 0.02 % sodium azide and 50 % glycerol.

Preservative: Sodium azide

Precaution of Use: This product contains Sodium azide: a POISONOUS AND HAZARDOUS SUBSTANCE which should be handled by trained staff only.

Storage: -20 °C

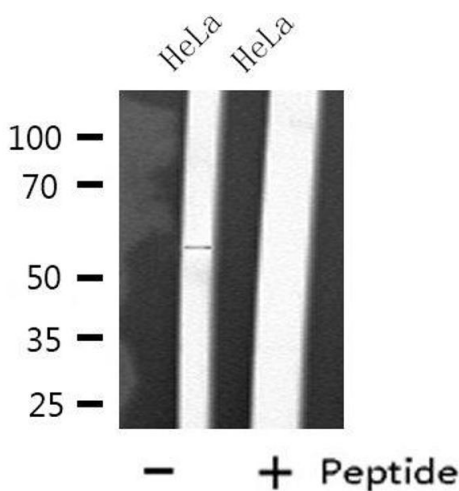
Storage Comment: Store at -20 °C.Stable for 12 months from date of receipt

Expiry Date: 12 months



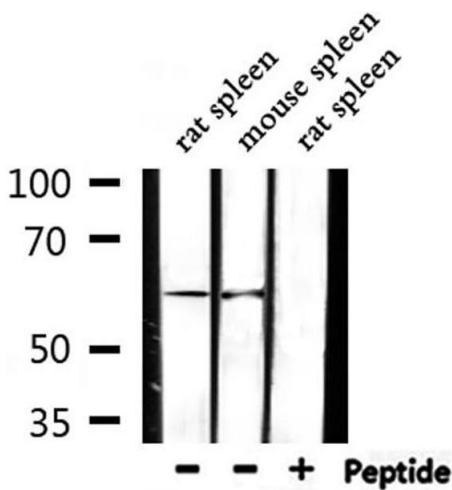
Immunofluorescence (fixed cells)

Image 1. ABIN6275822 staining HT29 cells by IF/ICC. The sample were fixed with PFA and permeabilized in 0.1% Triton X-100,then blocked in 10% serum for 45 minutes at 25°C. The primary antibody was diluted at 1/200 and incubated with the sample for 1 hour at 37°C. An Alexa Fluor 594 conjugated goat anti-rabbit IgG (H+L) antibody(Cat.# S0006), diluted at 1/600, was used as secondary antibody



Western Blotting

Image 2. Western blot analysis of extracts from HeLa cells, using CYP2D6 antibody.



Western Blotting

Image 3. Western blot analysis of extracts from rat spleen,mouse spleen, using Cytochrome P450 2D6 Antibody.