

Datasheet for ABIN6258050
anti-CYP17A1 antibody (Internal Region)[Go to Product page](#)

4 Images

Overview

Quantity:	100 µL
Target:	CYP17A1
Binding Specificity:	Internal Region
Reactivity:	Human, Mouse, Rat
Host:	Rabbit
Clonality:	Polyclonal
Conjugate:	This CYP17A1 antibody is un-conjugated
Application:	Western Blotting (WB), ELISA, Immunohistochemistry (IHC), Immunofluorescence (IF), Immunocytochemistry (ICC)

Product Details

Immunogen:	A synthesized peptide derived from human Cytochrome P450 17A1, corresponding to a region within the internal amino acids.
Isotype:	IgG
Specificity:	Cytochrome P450 17A1 Antibody detects endogenous levels of total Cytochrome P450 17A1.
Predicted Reactivity:	Dog
Purification:	The antiserum was purified by peptide affinity chromatography using SulfoLink™ Coupling Resin (Thermo Fisher Scientific).

Target Details

Target:	CYP17A1
---------	---------

Target Details

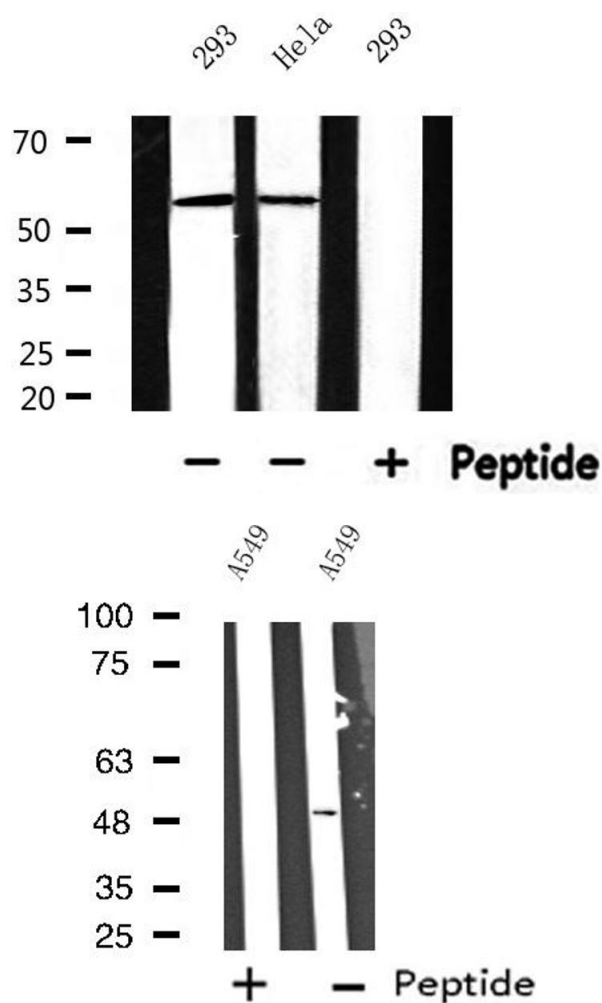
Alternative Name:	CYP17A1 (CYP17A1 Products)
Background:	<p>Description: Conversion of pregnenolone and progesterone to their 17-alpha-hydroxylated products and subsequently to dehydroepiandrosterone (DHEA) and androstenedione. Catalyzes both the 17-alpha-hydroxylation and the 17,20-lyase reaction. Involved in sexual development during fetal life and at puberty.</p> <p>Gene: CYP17A1</p>
Molecular Weight:	50 kDa
Gene ID:	1586
UniProt:	P05093
Pathways:	Metabolism of Steroid Hormones and Vitamin D , Steroid Hormone Biosynthesis , Regulation of Hormone Metabolic Process , Regulation of Hormone Biosynthetic Process , C21-Steroid Hormone Metabolic Process , Cellular Response to Molecule of Bacterial Origin

Application Details

Application Notes:	WB 1:500-1:1000, IHC 1:50-1:200, IF/ICC 1:200, ELISA(peptide) 1:20000-1:40000
Restrictions:	For Research Use only

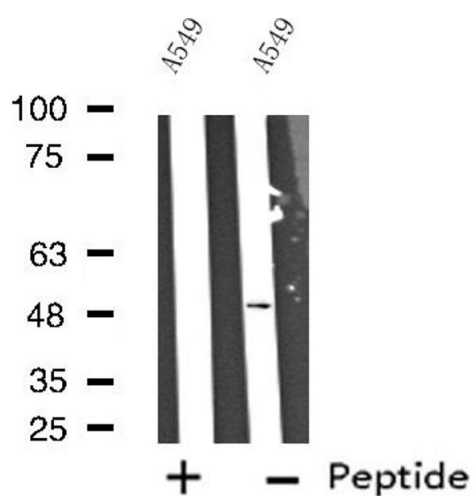
Handling

Format:	Liquid
Concentration:	1 mg/mL
Buffer:	Rabbit IgG in phosphate buffered saline , pH 7.4, 150 mM NaCl, 0.02 % sodium azide and 50 % glycerol.
Preservative:	Sodium azide
Precaution of Use:	This product contains Sodium azide: a POISONOUS AND HAZARDOUS SUBSTANCE which should be handled by trained staff only.
Storage:	-20 °C
Storage Comment:	Store at -20 °C. Stable for 12 months from date of receipt.
Expiry Date:	12 months



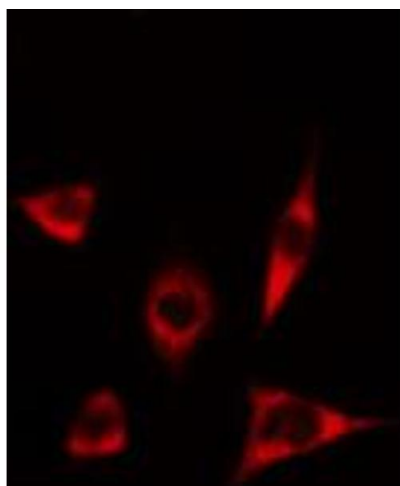
Western Blotting

Image 1. Western blot analysis of extracts from 293 and HeLa, using Cytochrome P450 17A1 Antibody.



Western Blotting

Image 2. Western blot analysis of extracts from A549 cells, using Cytochrome P450 17A1 antibody.



Immunofluorescence (fixed cells)

Image 3. ABIN6274634 staining HeLa cells by IF/ICC. The sample were fixed with PFA and permeabilized in 0.1% Triton X-100, then blocked in 10% serum for 45 minutes at 25°C. The primary antibody was diluted at 1/200 and incubated with the sample for 1 hour at 37°C. An Alexa Fluor 594 conjugated goat anti-rabbit IgG (H+L) antibody (Cat.# S0006), diluted at 1/600, was used as secondary antibody.

Please check the [product details page](#) for more images. Overall 4 images are available for ABIN6258050.