

Datasheet for ABIN6258069
anti-CYP2W1 antibody (Internal Region)[Go to Product page](#)

3 Images

Overview

Quantity:	100 µL
Target:	CYP2W1
Binding Specificity:	Internal Region
Reactivity:	Human, Mouse, Rat
Host:	Rabbit
Clonality:	Polyclonal
Conjugate:	This CYP2W1 antibody is un-conjugated
Application:	Immunohistochemistry (IHC), ELISA, Western Blotting (WB), Immunofluorescence (IF), Immunocytochemistry (ICC)

Product Details

Immunogen:	A synthesized peptide derived from human Cytochrome P450 2W1, corresponding to a region within the internal amino acids.
Isotype:	IgG
Specificity:	Cytochrome P450 2W1 Antibody detects endogenous levels of total Cytochrome P450 2W1.
Purification:	The antiserum was purified by peptide affinity chromatography using SulfoLink™ Coupling Resin (Thermo Fisher Scientific).

Target Details

Target:	CYP2W1
Alternative Name:	CYP2W1 (CYP2W1 Products)

Target Details

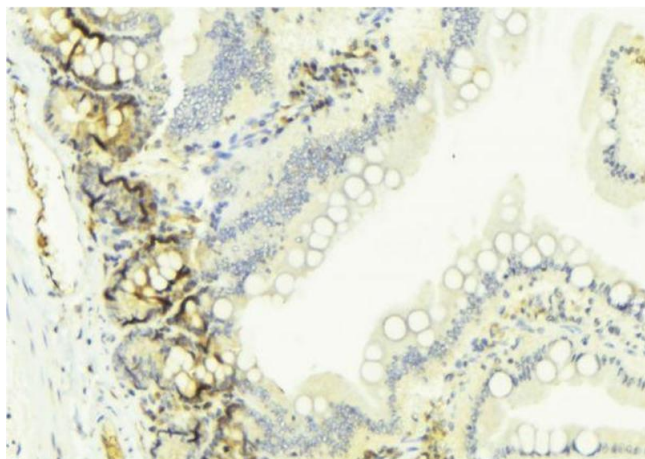
Background:	Description: Seems to have broad catalytic activity towards several chemicals, including polycyclic aromatic hydrocarbon dihydrodiols and aromatic amines (PubMed:16551781, PubMed:24278521). Active also in the metabolism of indoline substrates and is able to activate aflatoxin B1 into cytotoxic products (PubMed:20805301). Furthermore, it seems to be involved in the oxydation of lysophospholipids and fatty acids (PubMed:22591743). Gene: CYP2W1
Molecular Weight:	55 kDa
Gene ID:	54905
UniProt:	Q8TAV3

Application Details

Application Notes:	WB 1:500-1:2000, IHC: 1:50-1:200, IF/ICC 1:100-1:500, ELISA(peptide) 1:20000-1:40000
Restrictions:	For Research Use only

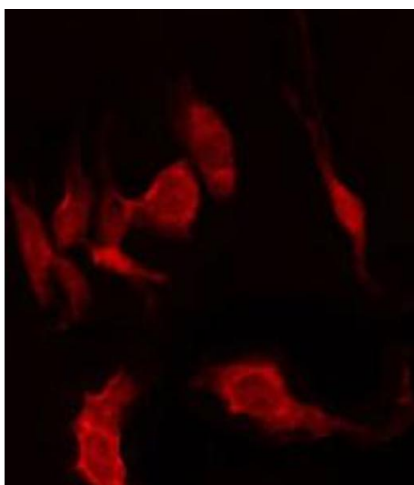
Handling

Format:	Liquid
Concentration:	1 mg/mL
Buffer:	Rabbit IgG in phosphate buffered saline , pH 7.4, 150 mM NaCl, 0.02 % sodium azide and 50 % glycerol.
Preservative:	Sodium azide
Precaution of Use:	This product contains Sodium azide: a POISONOUS AND HAZARDOUS SUBSTANCE which should be handled by trained staff only.
Storage:	-20 °C
Storage Comment:	Store at -20 °C. Stable for 12 months from date of receipt.
Expiry Date:	12 months



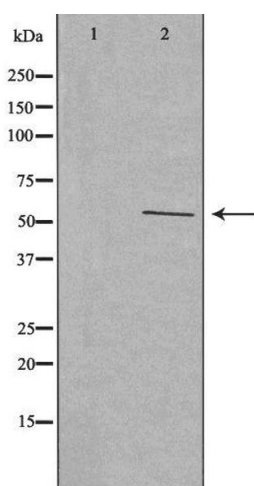
Immunohistochemistry

Image 1. ABIN6274654 at 1/100 staining Mouse colon tissue by IHC-P. The sample was formaldehyde fixed and a heat mediated antigen retrieval step in citrate buffer was performed. The sample was then blocked and incubated with the antibody for 1.5 hours at 22°C. An HRP conjugated goat anti-rabbit antibody was used as the secondary.



Immunofluorescence (fixed cells)

Image 2. ABIN6274654 staining HepG2 by IF/ICC. The sample were fixed with PFA and permeabilized in 0.1% Triton X-100, then blocked in 10% serum for 45 minutes at 25°C. The primary antibody was diluted at 1/200 and incubated with the sample for 1 hour at 37°C. An Alexa Fluor 594 conjugated goat anti-rabbit IgG (H+L) Ab, diluted at 1/600, was used as the secondary antibody.



Western Blotting

Image 3. Western blot analysis of extracts from HeLa cells using Cytochrome P450 2W1 antibody. The lane on the left is treated with the antigen-specific peptide.