



Datasheet for ABIN6258079  
**anti-CYP4X1 antibody**



[Go to Product page](#)

4 Images

Overview

Quantity:	100 µL
Target:	CYP4X1
Reactivity:	Human, Mouse
Host:	Rabbit
Clonality:	Polyclonal
Conjugate:	This CYP4X1 antibody is un-conjugated
Application:	Western Blotting (WB), ELISA, Immunohistochemistry (IHC), Immunofluorescence (IF), Immunocytochemistry (ICC)

Product Details

Immunogen:	A synthesized peptide
Isotype:	IgG
Specificity:	Cytochrome P450 4X1 Antibody detects endogenous levels of total Cytochrome P450 4X1
Cross-Reactivity:	Human, Mouse (Murine)
Purification:	The antiserum was purified by peptide affinity chromatography using SulfoLink™ Coupling Resin (Thermo Fisher Scientific).

Target Details

Target:	CYP4X1
Alternative Name:	Cytochrome P450 4X1 ( <a href="#">CYP4X1 Products</a> )

## Target Details

---

Background:	Description: $\text{RH} + [\text{reduced NADPH--hemoprotein reductase}] + \text{O}_2 = \text{ROH} + [\text{oxidized NADPH--hemoprotein reductase}] + \text{H}_2\text{O}$ . Gene: CYP4X1
Molecular Weight:	50 kDa
Gene ID:	260293
UniProt:	<a href="#">Q8N118</a>
Pathways:	<a href="#">Regulation of Lipid Metabolism by PPARAlpha</a>

## Application Details

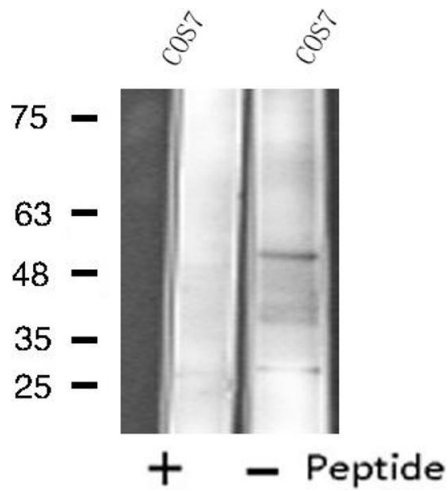
---

Application Notes:	WB 1:500~1:1000 IHC: 1:50~1:200, IF/ICC 1:100-1:500
Restrictions:	For Research Use only

## Handling

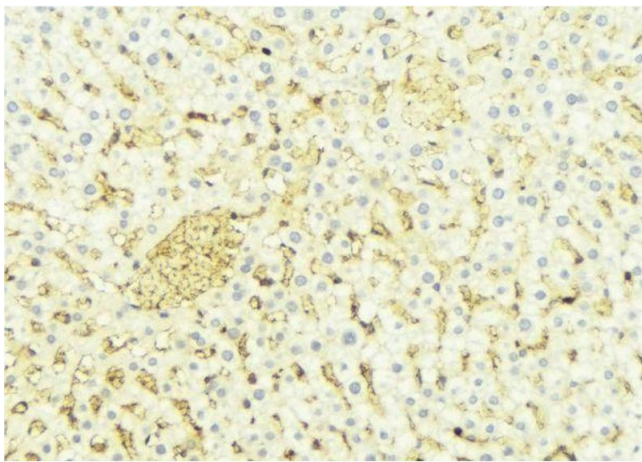
---

Format:	Liquid
Concentration:	1 mg/mL
Buffer:	Rabbit IgG in phosphate buffered saline , pH 7.4, 150 mM NaCl, 0.02 % sodium azide and 50 % glycerol.
Preservative:	Sodium azide
Precaution of Use:	This product contains Sodium azide: a POISONOUS AND HAZARDOUS SUBSTANCE which should be handled by trained staff only.
Storage:	-20 °C
Storage Comment:	Store at -20 °C.Stable for 12 months from date of receipt
Expiry Date:	12 months



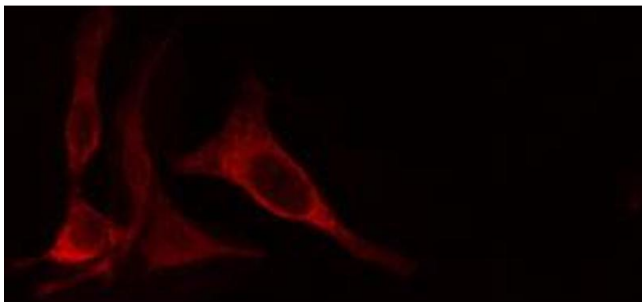
### Western Blotting

**Image 1.** Western blot analysis of extracts from COS7 cells, using Cytochrome P450 4X1 antibody.



### Immunohistochemistry

**Image 2.** ABIN6274660 at 1/100 staining Mouse liver tissue by IHC-P. The sample was formaldehyde fixed and a heat mediated antigen retrieval step in citrate buffer was performed. The sample was then blocked and incubated with the antibody for 1.5 hours at 22°C. An HRP conjugated goat anti-rabbit antibody was used as the secondary.



### Immunofluorescence (fixed cells)

**Image 3.** ABIN6274660 staining HeLa cells by IF/ICC. The sample were fixed with PFA and permeabilized in 0.1% Triton X-100, then blocked in 10% serum for 45 minutes at 25°C. The primary antibody was diluted at 1/200 and incubated with the sample for 1 hour at 37°C. An Alexa Fluor 594 conjugated goat anti-rabbit IgG (H+L) antibody (Cat.# S0006), diluted at 1/600, was used as secondary antibody.

Please check the [product details page](#) for more images. Overall 4 images are available for ABIN6258079.