

Datasheet for ABIN6258085
anti-CDH6 antibody (C-Term)[Go to Product page](#)

1 Image

Overview

Quantity:	100 µL
Target:	CDH6
Binding Specificity:	C-Term
Reactivity:	Human, Mouse, Rat
Host:	Rabbit
Clonality:	Polyclonal
Conjugate:	This CDH6 antibody is un-conjugated
Application:	Western Blotting (WB), ELISA

Product Details

Immunogen:	A synthesized peptide derived from human CDH6, corresponding to a region within C-terminal amino acids.
Isotype:	IgG
Specificity:	CDH6 Antibody detects endogenous levels of total CDH6.
Predicted Reactivity:	Pig,Bovine,Horse,Sheep,Rabbit,Chicken
Purification:	The antiserum was purified by peptide affinity chromatography using SulfoLink™ Coupling Resin (Thermo Fisher Scientific).

Target Details

Target:	CDH6
---------	------

Target Details

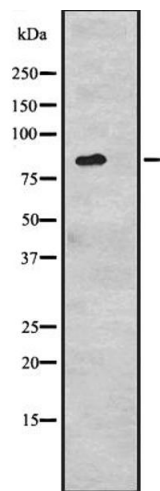
Alternative Name:	CDH6 (CDH6 Products)
Background:	<p>Description: Cadherins are calcium-dependent cell adhesion proteins. They preferentially interact with themselves in a homophilic manner in connecting cells, cadherins may thus contribute to the sorting of heterogeneous cell types.</p> <p>Gene: CDH6</p>
Molecular Weight:	88 kDa
Gene ID:	1004
UniProt:	P55285
Pathways:	Cell-Cell Junction Organization

Application Details

Application Notes:	WB 1:500-1:2000, ELISA(peptide) 1:20000-1:40000
Restrictions:	For Research Use only

Handling

Format:	Liquid
Concentration:	1 mg/mL
Buffer:	Rabbit IgG in phosphate buffered saline, pH 7.4, 150 mM NaCl, 0.02 % sodium azide and 50 % glycerol.
Preservative:	Sodium azide
Precaution of Use:	This product contains Sodium azide: a POISONOUS AND HAZARDOUS SUBSTANCE which should be handled by trained staff only.
Storage:	-20 °C
Expiry Date:	12 months



Western Blotting

Image 1. Western blot analysis of CDH6 expression in 293 cell line lysates ,The lane on the left is treated with the antigen-specific peptide.