



[Go to Product page](#)

Datasheet for ABIN6258095  
**anti-Cullin 4B antibody (N-Term)**

1 Image

### Overview

Quantity:	100 µL
Target:	Cullin 4B (CUL4B)
Binding Specificity:	N-Term
Reactivity:	Human, Mouse
Host:	Rabbit
Clonality:	Polyclonal
Conjugate:	This Cullin 4B antibody is un-conjugated
Application:	Western Blotting (WB), ELISA

### Product Details

Immunogen:	A synthesized peptide derived from human CUL4B, corresponding to a region within N-terminal amino acids.
Isotype:	IgG
Specificity:	CUL4B Antibody detects endogenous levels of total CUL4B.
Predicted Reactivity:	Pig,Bovine,Sheep,Rabbit,Dog
Purification:	The antiserum was purified by peptide affinity chromatography using SulfoLink™ Coupling Resin (Thermo Fisher Scientific).

### Target Details

Target:	Cullin 4B (CUL4B)
---------	-------------------

## Target Details

---

Alternative Name: CUL4B ([CUL4B Products](#))

---

Background: Description: Core component of multiple cullin-RING-based E3 ubiquitin-protein ligase complexes which mediate the ubiquitination and subsequent proteasomal degradation of target proteins. The functional specificity of the E3 ubiquitin-protein ligase complex depends on the variable substrate recognition subunit. CUL4B may act within the complex as a scaffold protein, contributing to catalysis through positioning of the substrate and the ubiquitin-conjugating enzyme. Plays a role as part of the E3 ubiquitin-protein ligase complex in polyubiquitination of CDT1, histone H2A, histone H3 and histone H4 in response to radiation-induced DNA damage. Targeted to UV damaged chromatin by DDB2 and may be important for DNA repair and DNA replication. Required for ubiquitination of cyclin E, and consequently, normal G1 cell cycle progression. Regulates the mammalian target-of-rapamycin (mTOR) pathway involved in control of cell growth, size and metabolism. Specific CUL4B regulation of the mTORC1-mediated pathway is dependent upon 26S proteasome function and requires interaction between CUL4B and MLST8.

Gene: CUL4B

---

Molecular Weight: 99 kDa?

---

Gene ID: 8450

---

UniProt: [Q13620](#)

---

## Application Details

---

Application Notes: WB 1:500-1:2000, ELISA(peptide) 1:20000-1:40000

---

Restrictions: For Research Use only

---

## Handling

---

Format: Liquid

---

Concentration: 1 mg/mL

---

Buffer: Rabbit IgG in phosphate buffered saline, pH 7.4, 150 mM NaCl, 0.02 % sodium azide and 50 % glycerol.

---

Preservative: Sodium azide

---

Precaution of Use: This product contains Sodium azide: a POISONOUS AND HAZARDOUS SUBSTANCE which should be handled by trained staff only.

---

## Handling

---

Storage: -20 °C

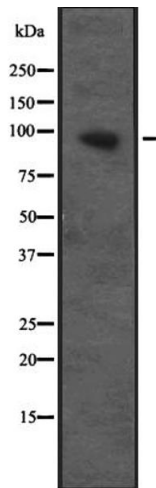
---

Expiry Date: 12 months

---

## Images

---



### Western Blotting

**Image 1.** Western blot analysis of CUL4B expression in Transfected 293T cell lysate, The lane on the left is treated with the antigen-specific peptide.