



[Go to Product page](#)

Datasheet for ABIN6258099

anti-CYP2B6 antibody (Internal Region)

2 Images

Overview

| | |
|----------------------|--|
| Quantity: | 100 µL |
| Target: | CYP2B6 |
| Binding Specificity: | Internal Region |
| Reactivity: | Human |
| Host: | Rabbit |
| Clonality: | Polyclonal |
| Conjugate: | This CYP2B6 antibody is un-conjugated |
| Application: | Western Blotting (WB), ELISA, Immunofluorescence (IF), Immunocytochemistry (ICC) |

Product Details

| | |
|-----------------------|---|
| Immunogen: | A synthesized peptide derived from human Cytochrome P450 2B6, corresponding to a region within the internal amino acids. |
| Isotype: | IgG |
| Specificity: | Cytochrome P450 2B6 Antibody detects endogenous levels of total Cytochrome P450 2B6. |
| Predicted Reactivity: | Bovine |
| Purification: | The antiserum was purified by peptide affinity chromatography using SulfoLink™ Coupling Resin (Thermo Fisher Scientific). |

Target Details

| | |
|---------|--------|
| Target: | CYP2B6 |
|---------|--------|

Target Details

Alternative Name: CYP2B6 ([CYP2B6 Products](#))

Background: Description: Cytochromes P450 are a group of heme-thiolate monooxygenases. In liver microsomes, this enzyme is involved in an NADPH-dependent electron transport pathway. It oxidizes a variety of structurally unrelated compounds, including steroids, fatty acids, and xenobiotics. Acts as a 1,4-cineole 2-exo-monooxygenase.
Gene: CYP2B6

Molecular Weight: 56 kDa

Gene ID: 1555

UniProt: [P20813](#)

Application Details

Application Notes: WB 1:500-1:1000, IF/ICC 1:100-1:500, ELISA(peptide) 1:20000-1:40000

Restrictions: For Research Use only

Handling

Format: Liquid

Concentration: 1 mg/mL

Buffer: Rabbit IgG in phosphate buffered saline , pH 7.4, 150 mM NaCl, 0.02 % sodium azide and 50 % glycerol.

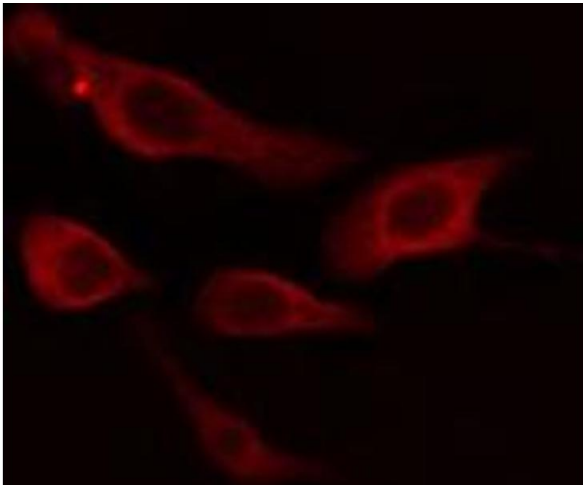
Preservative: Sodium azide

Precaution of Use: This product contains Sodium azide: a POISONOUS AND HAZARDOUS SUBSTANCE which should be handled by trained staff only.

Storage: -20 °C

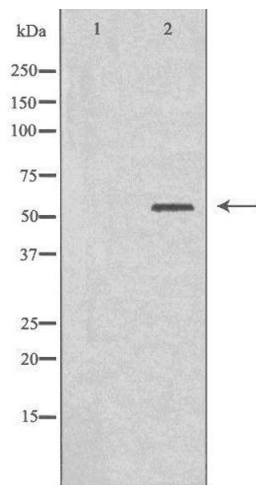
Storage Comment: Store at -20 °C. Stable for 12 months from date of receipt.

Expiry Date: 12 months



Immunofluorescence (fixed cells)

Image 1. ABIN6274645 staining HT29 cells by IF/ICC. The sample were fixed with PFA and permeabilized in 0.1% Triton X-100, then blocked in 10% serum for 45 minutes at 25°C. The primary antibody was diluted at 1/200 and incubated with the sample for 1 hour at 37°C. An Alexa Fluor 594 conjugated goat anti-rabbit IgG (H+L) antibody (Cat.# S0006), diluted at 1/600, was used as secondary antibody.



Western Blotting

Image 2. Western blot analysis of extracts from HT-29 cells, using Cytochrome P450 2B6 antibody. The lane on the left is treated with the antigen-specific peptide.