

Datasheet for ABIN6258102
anti-Keratin 36 antibody (Internal Region)

3 Images

[Go to Product page](#)

Overview

Quantity:	100 µL
Target:	Keratin 36 (KRT36)
Binding Specificity:	Internal Region
Reactivity:	Human, Rat
Host:	Rabbit
Clonality:	Polyclonal
Conjugate:	This Keratin 36 antibody is un-conjugated
Application:	Western Blotting (WB), ELISA, Immunohistochemistry (IHC), Immunocytochemistry (ICC), Immunofluorescence (IF)

Product Details

Immunogen:	A synthesized peptide derived from human KRT36, corresponding to a region within the internal amino acids.
Isotype:	IgG
Specificity:	KRT36 Antibody detects endogenous levels of total KRT36.
Predicted Reactivity:	Pig,Bovine,Horse,Sheep,Dog
Purification:	The antiserum was purified by peptide affinity chromatography using SulfoLink™ Coupling Resin (Thermo Fisher Scientific).

Target Details

Target:	Keratin 36 (KRT36)
---------	--------------------

Target Details

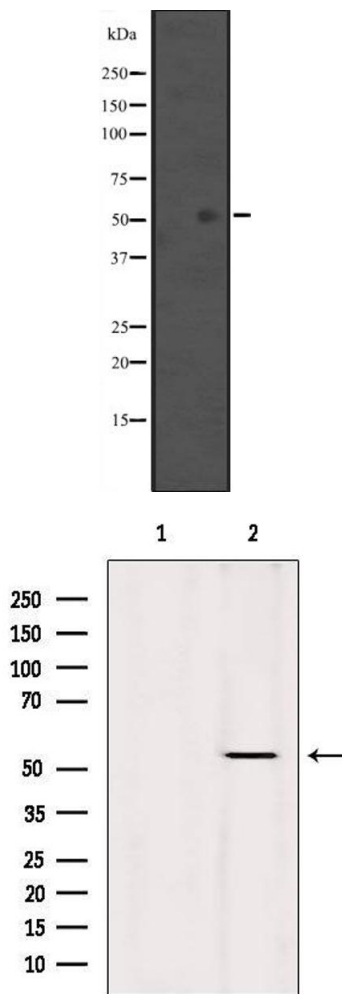
Alternative Name:	KRT36 (KRT36 Products)
Background:	Description: There are two types of hair/microfibrillar keratin, I (acidic) and II (neutral to basic). Gene: KRT36
Molecular Weight:	52 kDa
Gene ID:	8689
UniProt:	076013

Application Details

Application Notes:	WB 1:500-1:2000, IHC 1:50-1:200, IF/ICC 1:100-1:500, ELISA(peptide) 1:20000-1:40000
Restrictions:	For Research Use only

Handling

Format:	Liquid
Concentration:	1 mg/mL
Buffer:	Rabbit IgG in phosphate buffered saline, pH 7.4, 150 mM NaCl, 0.02 % sodium azide and 50 % glycerol.
Preservative:	Sodium azide
Precaution of Use:	This product contains Sodium azide: a POISONOUS AND HAZARDOUS SUBSTANCE which should be handled by trained staff only.
Storage:	-20 °C
Expiry Date:	12 months

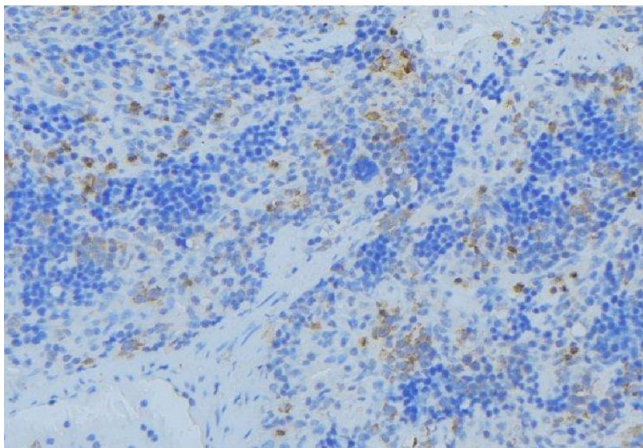


Western Blotting

Image 1. Western blot analysis of KRT36 expression in HeLa cell lysate. The lane on the left is treated with the antigen-specific peptide.

Western Blotting

Image 2. Western blot analysis of extracts from HeLa, using KRT36 Antibody. Lane 1 was treated with the blocking peptide.



Immunohistochemistry

Image 3. ABIN6273682 at 1/100 staining Human lymph node tissue by IHC-P. The sample was formaldehyde fixed and a heat mediated antigen retrieval step in citrate buffer was performed. The sample was then blocked and incubated with the antibody for 1.5 hours at 22°C. An HRP conjugated goat anti-rabbit antibody was used as the secondary