

## Datasheet for ABIN625813 anti-GM2A antibody (AA 179-189)



[Go to Product page](#)

### 2 Images

#### Overview

Quantity:	100 µg
Target:	GM2A
Binding Specificity:	AA 179-189
Reactivity:	Rat
Host:	Goat
Clonality:	Polyclonal
Conjugate:	This GM2A antibody is un-conjugated
Application:	Western Blotting (WB), ELISA

#### Product Details

Purpose:	GM2A (aa 179-189)
Immunogen:	KRLGCIKIAAS
Sequence:	KRLGCIKIAA S
Isotype:	IgG
Specificity:	This antibody is expected to recognize isoform 1 (NP_000396.2) only.
Cross-Reactivity:	Dog, Human, Mouse, Rat
Purification:	Purified from goat serum by ammonium sulphate precipitation followed by antigen affinity chromatography using the immunizing peptide.
Grade:	Verified

## Target Details

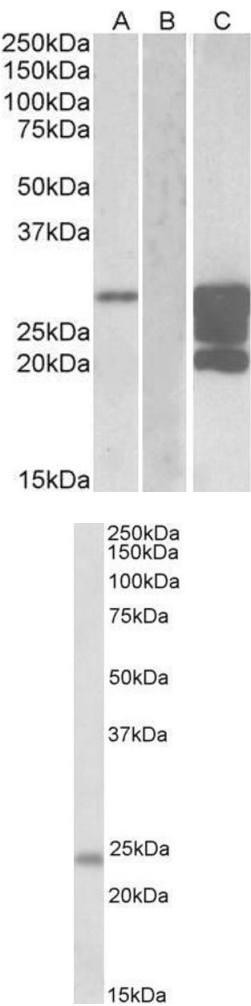
Target:	GM2A
Alternative Name:	GM2A ( <a href="#">GM2A Products</a> )
Background:	GM2A, GM2 ganglioside activator, SAP-3, cerebroside sulfate activator protein, sphingolipid activator protein 3
Gene ID:	2760, 14667, 282838
NCBI Accession:	<a href="#">NP_000396</a>

## Application Details

Application Notes:	Western Blot: Approx. 24 kDa band was observed in Rat Kidney lysates (calculated MW of 21.5 kDa according to NP_758838.2 ). Recommended concentration: 0.3-1 µg/mL. Primary incubation was 1 hour.  Peptide ELISA: antibody detection limit dilution 1:4000.
Comment:	Purchase the +ve control! The transfected lysate used to QC this product is available for sale.  Please email <a href="mailto:sales@everestbiotech.com">sales@everestbiotech.com</a> to request datasheet, pricing and delivery information.
Restrictions:	For Research Use only

## Handling

Format:	Liquid
Concentration:	0.5 mg/mL
Buffer:	Supplied at 0.5 mg/mL in Tris saline, 0.02 % sodium azide, pH 7.3 with 0.5 % bovine serum albumin.
Preservative:	Sodium azide
Precaution of Use:	This product contains Sodium azide: a POISONOUS AND HAZARDOUS SUBSTANCE which should be handled by trained staff only.
Handling Advice:	Minimize freezing and thawing.
Storage:	-20 °C
Storage Comment:	Aliquot and store at -20°C, with minimal freeze/thawing. A working aliquot may be refrigerated at 4°C for a few weeks and still remain viable.



Western Blotting

**Image 1.** HEK293 lysate (10ug protein in RIPA buffer) overexpressing Human GM2A with DYKDDDDK tag probed with ABIN625813 (1.0ug/ml) in Lane A and probed with anti-DYKDDDDK Tag (1/30000) in lane C. Mock-transfected HEK293 probed with ABIN625813 (1mg/ml) in Lane B. Primary incubations were for 1 hour. Detected by chemiluminescence.

Western Blotting

**Image 2.** ABIN625812 (0.3µg/ml) staining of Rat Kidney lysate (35µg protein in RIPA buffer). Primary incubation was 1 hour. Detected by chemiluminescence.