



[Go to Product page](#)

Datasheet for ABIN6258140  
**anti-S1PR3 antibody (N-Term)**

2 Images

Overview

Quantity:	100 µL
Target:	S1PR3
Binding Specificity:	N-Term
Reactivity:	Human, Mouse, Rat
Host:	Rabbit
Clonality:	Polyclonal
Conjugate:	This S1PR3 antibody is un-conjugated
Application:	Western Blotting (WB), ELISA, Immunohistochemistry (IHC), Immunofluorescence (IF), Immunocytochemistry (ICC)

Product Details

Immunogen:	A synthesized peptide derived from human EDG3, corresponding to a region within N-terminal amino acids.
Isotype:	IgG
Specificity:	EDG3 Antibody detects endogenous levels of total EDG3.
Purification:	The antiserum was purified by peptide affinity chromatography using SulfoLink™ Coupling Resin (Thermo Fisher Scientific).

Target Details

Target:	S1PR3
Alternative Name:	S1PR3 ( <a href="#">S1PR3 Products</a> )

## Target Details

---

**Background:** Description: Receptor for the lysosphingolipid sphingosine 1-phosphate (S1P). S1P is a bioactive lysophospholipid that elicits diverse physiological effect on most types of cells and tissues. When expressed in rat HTC4 hepatoma cells, is capable of mediating S1P-induced cell proliferation and suppression of apoptosis.  
Gene: S1PR3

**Molecular Weight:** 40 kDa

**Gene ID:** 1903

**UniProt:** [Q99500](#)

## Application Details

---

**Application Notes:** WB 1:500-1:1000, IF/ICC 1:100-1:500, IHC 1:50-1:200, ELISA(peptide) 1:20000-1:40000

**Restrictions:** For Research Use only

## Handling

---

**Format:** Liquid

**Concentration:** 1 mg/mL

**Buffer:** Rabbit IgG in phosphate buffered saline , pH 7.4, 150 mM NaCl, 0.02 % sodium azide and 50 % glycerol.

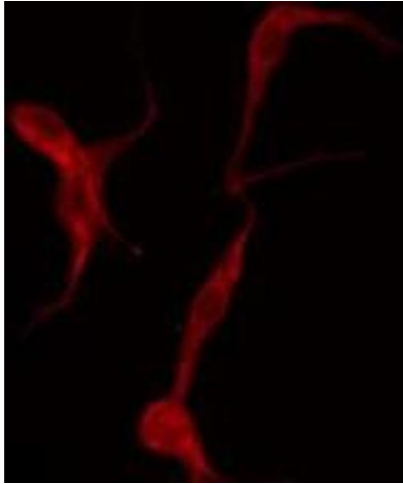
**Preservative:** Sodium azide

**Precaution of Use:** This product contains Sodium azide: a POISONOUS AND HAZARDOUS SUBSTANCE which should be handled by trained staff only.

**Storage:** -20 °C

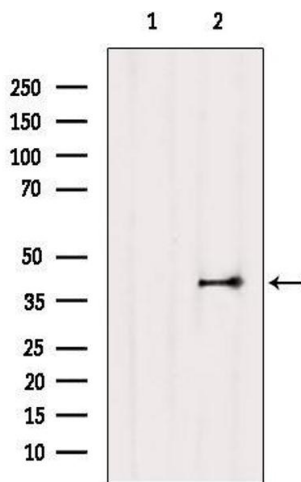
**Storage Comment:** Store at -20 °C. Stable for 12 months from date of receipt.

**Expiry Date:** 12 months



### Immunofluorescence (fixed cells)

**Image 1.** ABIN6275931 staining HeLa by IF/ICC. The sample were fixed with PFA and permeabilized in 0.1% Triton X-100, then blocked in 10% serum for 45 minutes at 25°C. The primary antibody was diluted at 1/200 and incubated with the sample for 1 hour at 37°C. An Alexa Fluor 594 conjugated goat anti-rabbit IgG (H+L) Ab, diluted at 1/600, was used as the secondary antibody



### Western Blotting

**Image 2.** Western blot analysis of extracts from Mouse lung, using EDG3 Antibody. The lane on the left was treated with blocking peptide.