

Datasheet for ABIN6258145  
**anti-S1PR5 antibody (C-Term)**[Go to Product page](#)

## 1 Image

## Overview

Quantity:	100 µL
Target:	S1PR5
Binding Specificity:	C-Term
Reactivity:	Human, Mouse, Rat
Host:	Rabbit
Clonality:	Polyclonal
Application:	ELISA, Western Blotting (WB)

## Product Details

Immunogen:	A synthesized peptide derived from human EDG8, corresponding to a region within C-terminal amino acids.
Isotype:	IgG
Specificity:	EDG8 Antibody detects endogenous levels of total EDG8.
Predicted Reactivity:	Pig,Bovine,Dog
Purification:	The antiserum was purified by peptide affinity chromatography using SulfoLink™ Coupling Resin (Thermo Fisher Scientific).

## Target Details

Target:	S1PR5
Alternative Name:	S1PR5 ( <a href="#">S1PR5 Products</a> )

## Target Details

Background:	<p>Description: Receptor for the lysosphingolipid sphingosine 1-phosphate (S1P). S1P is a bioactive lysophospholipid that elicits diverse physiological effect on most types of cells and tissues. Is coupled to both the G(i/o)alpha and G(12) subclass of heteromeric G-proteins (By similarity). May play a regulatory role in the transformation of radial glial cells into astrocytes and may affect proliferative activity of these cells.</p> <p>Gene: S1PR5</p>
-------------	-------------------------------------------------------------------------------------------------------------------------------------------------------------------------------------------------------------------------------------------------------------------------------------------------------------------------------------------------------------------------------------------------------------------------------------------------------------------------

Molecular Weight:	41 kDa
-------------------	--------

Gene ID:	53637
----------	-------

UniProt:	<a href="#">Q9H228</a>
----------	------------------------

## Application Details

Application Notes:	WB 1:500-1:2000, ELISA(peptide) 1:20000-1:40000
--------------------	-------------------------------------------------

Restrictions:	For Research Use only
---------------	-----------------------

## Handling

Format:	Liquid
---------	--------

Concentration:	1 mg/mL
----------------	---------

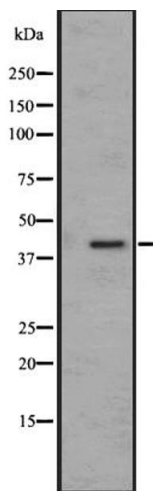
Buffer:	Rabbit IgG in phosphate buffered saline, pH 7.4, 150 mM NaCl, 0.02 % sodium azide and 50 % glycerol.
---------	------------------------------------------------------------------------------------------------------

Preservative:	Sodium azide
---------------	--------------

Precaution of Use:	This product contains Sodium azide: a POISONOUS AND HAZARDOUS SUBSTANCE which should be handled by trained staff only.
--------------------	------------------------------------------------------------------------------------------------------------------------

Storage:	-20 °C
----------	--------

Expiry Date:	12 months
--------------	-----------



Western Blotting

**Image 1.** Western blot analysis of EDG8 expression in HEK293 cells ,The lane on the left is treated with the antigen-specific peptide.