

Datasheet for ABIN6258176
anti-GPR35 antibody (Internal Region)[Go to Product page](#)

1 Image

Overview

Quantity:	100 µL
Target:	GPR35
Binding Specificity:	Internal Region
Reactivity:	Human, Mouse
Host:	Rabbit
Clonality:	Polyclonal
Conjugate:	This GPR35 antibody is un-conjugated
Application:	Western Blotting (WB), ELISA

Product Details

Immunogen:	A synthesized peptide derived from human GPR35, corresponding to a region within the internal amino acids.
Isotype:	IgG
Specificity:	GPR35 Antibody detects endogenous levels of total GPR35.
Predicted Reactivity:	Pig,Horse
Purification:	The antiserum was purified by peptide affinity chromatography using SulfoLink™ Coupling Resin (Thermo Fisher Scientific).

Target Details

Target:	GPR35
---------	-------

Target Details

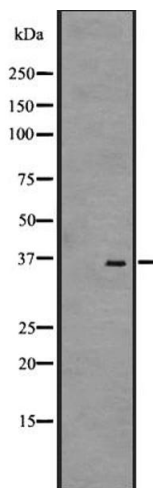
Alternative Name:	GPR35 (GPR35 Products)
Background:	<p>Description: Acts as a receptor for kynurenic acid, an intermediate in the tryptophan metabolic pathway. The activity of this receptor is mediated by G-proteins that elicit calcium mobilization and inositol phosphate production through G(qi/o) proteins.</p> <p>Gene: GPR35</p>
Molecular Weight:	34 kDa
Gene ID:	2859
UniProt:	Q9HC97

Application Details

Application Notes:	WB 1:500-1:2000, ELISA(peptide) 1:20000-1:40000
Restrictions:	For Research Use only

Handling

Format:	Liquid
Concentration:	1 mg/mL
Buffer:	Rabbit IgG in phosphate buffered saline, pH 7.4, 150 mM NaCl, 0.02 % sodium azide and 50 % glycerol.
Preservative:	Sodium azide
Precaution of Use:	This product contains Sodium azide: a POISONOUS AND HAZARDOUS SUBSTANCE which should be handled by trained staff only.
Storage:	-20 °C
Expiry Date:	12 months



Western Blotting

Image 1. Western blot analysis of GPR35 expression in A431 whole cell lysate ,The lane on the left is treated with the antigen-specific peptide.