

Datasheet for ABIN6258180
anti-GPR4 antibody (Internal Region)[Go to Product page](#)

3 Images

Overview

Quantity:	100 µL
Target:	GPR4
Binding Specificity:	Internal Region
Reactivity:	Human, Rat, Mouse
Host:	Rabbit
Clonality:	Polyclonal
Conjugate:	This GPR4 antibody is un-conjugated
Application:	Western Blotting (WB), ELISA, Immunocytochemistry (ICC), Immunofluorescence (IF)

Product Details

Immunogen:	A synthesized peptide derived from human GPR4, corresponding to a region within the internal amino acids.
Isotype:	IgG
Specificity:	GPR4 Antibody detects endogenous levels of total GPR4.
Predicted Reactivity:	Pig,Zebrafish,Bovine,Dog
Purification:	The antiserum was purified by peptide affinity chromatography using SulfoLink™ Coupling Resin (Thermo Fisher Scientific).

Target Details

Target:	GPR4
---------	------

Target Details

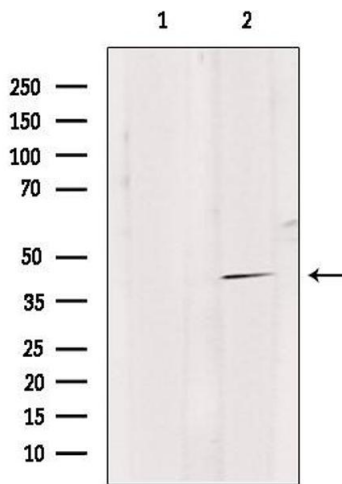
Alternative Name:	GPR4 (GPR4 Products)
Background:	Description: Proton-sensing receptor coupled to several G-proteins, including G(s), G(13) and G(q)/G(11) proteins, leading to cAMP production. Gene: GPR4
Molecular Weight:	41 kDa
Gene ID:	2828
UniProt:	P46093

Application Details

Application Notes:	WB 1:500-1:2000, IF/ICC 1:200, ELISA(peptide) 1:20000-1:40000
Restrictions:	For Research Use only

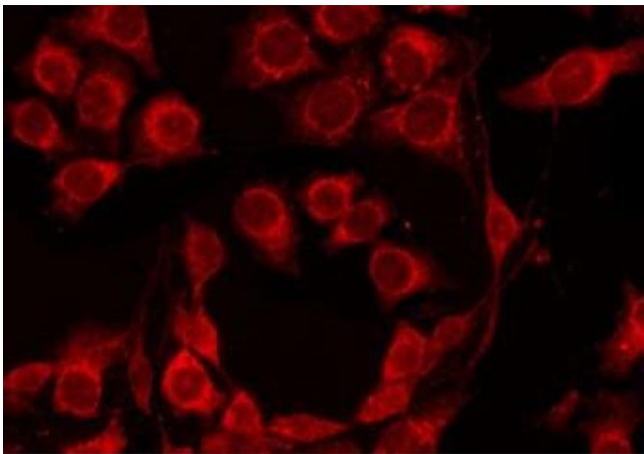
Handling

Format:	Liquid
Concentration:	1 mg/mL
Buffer:	Rabbit IgG in phosphate buffered saline, pH 7.4, 150 mM NaCl, 0.02 % sodium azide and 50 % glycerol.
Preservative:	Sodium azide
Precaution of Use:	This product contains Sodium azide: a POISONOUS AND HAZARDOUS SUBSTANCE which should be handled by trained staff only.
Storage:	-20 °C
Expiry Date:	12 months



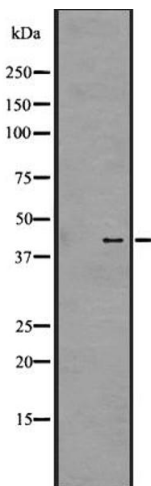
Western Blotting

Image 1. Western blot analysis of extracts from HepG2, using GPR4 Antibody. Lane 1 was treated with the blocking peptide.



Immunofluorescence (fixed cells)

Image 2. ABIN6273874 staining 293T by IF/ICC. The sample were fixed with PFA and permeabilized in 0.1% Triton X-100, then blocked in 10% serum for 45 minutes at 25°C. The primary antibody was diluted at 1/200 and incubated with the sample for 1 hour at 37°C. An Alexa Fluor 594 conjugated goat anti-rabbit IgG (H+L) Ab, diluted at 1/600, was used as the secondary antibody.



Western Blotting

Image 3. Western blot analysis of GPR4 expression in Raji whole cell lysate. The lane on the left is treated with the antigen-specific peptide.